

EARLY HEAD START

FAMILY DEVELOPMENT CENTER

GOVERNORS STATE UNIVERSITY



2019 ANNUAL REPORT

CONTENTS

1

- Letter from the Director

2

- About the Family Development Center

3

- Meet the Early Head Start Team
- Program Accomplishments

4

- Parent Involvement
- Community Engagement

5

- Funding





LETTER FROM THE DIRECTOR



It is with pleasure that I bring to you the 2019 Early Head Start Annual Report to the Public. The staff of the Family Development Center works hard on behalf of the children and families in our community. This year we are grateful to IHI Power Services Inc. for providing a much-needed donation that allowed us to install a new preschool bike path, indoor and outdoor carpeting in our Early Head Start atriums along with a climber, and much needed safety improvements to our front entrance. In addition, FDC has worked in conjunction with GSU's College of Education to create Early Development Professional Institute, an organization that provides professional development opportunities with a focus on infant/toddler development to Chicago's South Suburbs— an area and topic that have been underserved in the South Suburban community. The organization provides much needed Gateways Credit Hours and CPDUs for teachers with professional licenses. Finally, the children of GSU became officially known as “Jr. Jaguars” and celebrated Homecoming by participating in a Jr. Jaguar Parade. 2019 was an incredible year for the children and families of GSU, who are 100% college bound!

Erin Soto

Erin Soto
Executive Director
Family Development Center
Home of the Jr. Jaguars
“Here, You Are Home”

ABOUT THE FAMILY DEVELOPMENT CENTER

MISSION

The mission of the Family Development Center (FDC), a division of Governors State University's College of Education, is to provide accessible and exceptional education for children, families, and students, and to encourage lifelong learning and the development of the whole child.

VISION

The Family Development Center will be the model Early Education Center for the South Suburbs.

OUR PHILOSOPHY

We believe that children learn in many different ways and children's learning is impacted by a variety of forces. When children are actively engaged and construct their own knowledge through hands-on activities in a stimulating environment, their growth and development flourish. We use a research-based, reasoned eclectic approach with Creative Curriculum as our play-based foundation. We honor diversity, creativity and joy in every experience and strive to provide security and emotional support for our children and families.

FACILITY

The Family Development Center is a Division of the College of Education at Governors State University and was established originally as a charter school in 2003.

The building, nested on campus among native prairie flowers and GSU's esteemed Nathan Manilow Sculpture Park, is a state of the art facility whose architectural design earned it a position as a Merit Award Finalist from the Chicago Building Congress.

The FDC's 50 employees serve up to 181 children with a \$2.8 M budget, ranking it in the top 15 in budget and size of programs in the country and one of the largest in the state of Illinois. Over this fiscal year, 220 children were served in our program by a total of 50 staff members.

PROGRAMS

The Family Development Center is designed to serve the needs of the surrounding community as well as university constituents. The FDC offers full-time care for children age birth to 12 years of age. In addition to center-based educational care, curriculum and support services are offered to pregnant women. Home based

services are provided to families with children up to age two that are not in need of full time care.

Family Development Center programs are supported by grants, donations and private tuition payments from parents. FDC is funded by three major grants: Early Head Start, Preschool for All, and Preschool Expansion.

Early Head Start is a year-round federally funded program that provides comprehensive education and family support to low income pregnant women and families with children age birth to three. This program provides 6 hours of center based care in addition to home-based services with a focus on high-quality comprehensive services to support the whole family. Funding serves 42 children our center based program, 24 in our home based program and 6 pregnant women.

At age three, children may transition to our 2.5 hour half-day 10-month Preschool for All classroom or our 6.5 hour Preschool for All Expansion classrooms. The goal of the Preschool for All program is to provide educational services to all 3- to 5-year- old and focuses on providing high-quality educational programs for children who are determined to be at risk of academic failure. We are funded for 94 children in this program.

Our full-day options blend Preschool For All or Early Head Start grant funding with parent's tuition or state Child Care Assistance Payments to provide wrap around care for 11 hours of high quality education and care for families that are working or in school full time.

When children turn five, they transition to Kindergarten in their local school district. The Family Development Center continues to offer before-and-after child care during the school year for children enrolled in Crete-Monee School District 201-U, and full day summer camp open for 3-8 year olds in the summer.

All center-based programs are licensed by the State of Illinois Department of Children and Family Services (DCFS), and are accredited by the National Association for the Education of Young Children (NAEYC). We are also an ExceleRate Gold Level program.

Proud to be in the
Gold Circle of Quality



MEET THE EARLY HEAD START TEAM

LEADERSHIP:

Executive Director: Erin Soto

Family Service Director: Jillian Roth

Health, Safety, and Nutrition Services: Claudia Nguyen

Education, Disabilities and Mental Health Services: Selene Willard

Center Director: Barb Calibraro

POLICY COUNCIL:

Chair: Saleemah Ali

Vice Chair: Lori Olurin- Center Based EHS

Secretary: Keshia Ward- Center Based EHS

GOVERNING GROUP:

Chair: Shannon Dermer PH.D

Vice Chair: Catherine Balthazar, PH.D

Secretary: Natalia Ermasova, PH.D

PROGRAM ACCOMPLISHMENTS

IMPROVEMENTS

A generous \$50,000 donation which allowed FDC to install a dedicated bike track in the Preschool Playground, install indoor/outdoor carpeting and a climber in the EHS atrium, and make safety improvements to main entrance area.

FAMILY SUCCESS CORNER:

Tara Hanley and her two boys have been a part of the Family Development center since 2014. A home visitor provided weekly sessions to Hanley's oldest son starting after he turned 2 years old. "I loved the individual focus on making sure he was learning and meeting his milestones. We also visited the center once a month for play group, to interact with other parents and children around his age," she said.

When Hanley became pregnant with her second son, Jaxon, she received additional home visits during the pregnancy and continued them until Jaxon took his guaranteed spot at the FDC. Once the toddler started in the program, the EHS staff helped find therapeutic resources for him including one-to-one services at the center to improve his speech. Hanley is grateful the EHS home visitors dug a little deeper to make sure her boys were set up for success. "I believe the EHS program helped my children build a strong fundamental foundation for not only learning but social skills as well. Jaxon is now about to graduate from pre-k with the kindergarten skills he will need such as writing his name, adding and sight words. I would recommend this program to everyone because they truly love and care for our children," she said.



PARENT INVOLVEMENT

PARENT INVOLVEMENT ACTIVITIES

Policy Council – Policy Council is a monthly meeting held for elected EHS parents. Our Policy Council consists of 5 parents and 2 community members. The meetings run for 12 months until annual elections take place in September at which that time new members are elected and/or old members are re-elected. Childcare is provided.

- **January** – Emergency Preparedness
- **February** – Sports Day with Dad
- **March** – Community Resources
- **April** – Financial Literacy
- **May** – Parent Resource Fair
- **June** – Car Seat Safety
- **July** – Mental Health
- **August** – Open House
- **September** – Building Credit
- **October** – Mental Health Part 2
- **November** – Triple P Parenting Workshop
- **December** – Triple P Parenting Workshop

COMMUNITY ENGAGEMENT

HEALTH ADVISORY COMMITTEE

Special thanks to the following members of the Health Advisory Committee for their time and input on health data, self-assessment, under-enrollment and recruitment efforts:

- **Kathleen Lynch-Hale** – Early Learning Center
- **Caren Schranz** – GSU Occupational Therapy
- **Shanice Graham Ingalls** – Healthy Baby Network
- **Linda Paschall** – FDC Nurse Advisor
- **Deloris Walker** – University of Illinois Extensions
- **Georgia VanderBoegh** – Will County Health Department
- **Gia Washington** – Sertoma
- **Shawn West** – Will/Grundy Medical Clinic
- **Pat Krause** – Will County WIC
- **Rebecca Deang** – Will County Health Department, Community Health Educator AOK Network
- **Patrick McCarthy Will County** – Immunizations

GSU EHS has Memorandum of Agreements with the following agencies:

Social Service:

- Prairie State Legal Services
- Illinois Action for Children
- Sertoma Centre, Inc.
- University Park Library
- Workforce Services Division of Will County

- Village of University Park
- Illinois Network of Child Care Resource & Referral Agencies
- Proactive Community Services
- WIC
- South Suburban Family Shelter

Health:

- Will County Health Department
- Respond Now

Education/Disabilities:

- Crete-Monee High School
- Crete-Monee Early Learning Center
- Steger School District 194
- Child and Family Connections #15
- Child and Family Connections #12

COMMUNITY PARTNER SUCCESS STORY

We were very happy to hear that the Will County Dental Van was back in service this year. It has always provided a great service to many of our children who have fallen behind with dental exams and this past visit 10 children were seen by Dr. Sangita Garg to complete their exams. Services are available to Early Head Start Children as young as two through age 5.

FUNDING

BUDGET

FY19 REVENUE	
Program	Total Funding
Early Head Start	\$1,004,888
Non Federal Share	\$251,222
US Department of Agriculture Child and Adult Care Food Program Reimbursement	\$83,595
Illinois Department of Human Services Child Care Subsidies	\$795,718
ISBE Preschool for All	\$450,069
ISBE Preschool Expansion	\$285,698
Total Operating Budget	\$2,871,190

EHS BUDGET

This year GSU EHS received \$126,123 supplemental grant from Head Start to repair a deteriorating HVAC system and make safety updates to the building structure.

Early Head Start	Budgeted	Actual
Personnel Salaries	\$573,567	\$550,784
Fringe Benefits	\$286,784	\$269,042
Travel	\$4,374	\$9191
Equipment	\$123,092	\$126,123
Supplies	\$27,716	\$14,130
Other	\$51,486	\$79,727
Indirect Costs	\$64,526	\$61487
Total	\$1,131,545	\$1,110,484
Food Program income	\$40,978	\$43,907

DEMOGRAPHIC BREAKDOWN OF FAMILIES AND CHILDREN

Single Parent	Foster Parent	Homeless	Two Parent
75	2	9	19

Bi-racial	Black	Caucasian
10	94	14

WIC	Food Stamps
60	54



CHILDREN SERVED

Cumulative Number of Children Served By funding source

Early Head Start: 118

Actual Early Head Start Average Monthly Enrollment: 63

Percentage of Eligible Early Head Start Children served: According to IECAM data, GSU EHS served 118 of the 1424 or 8% of the eligible children in the service delivery area.

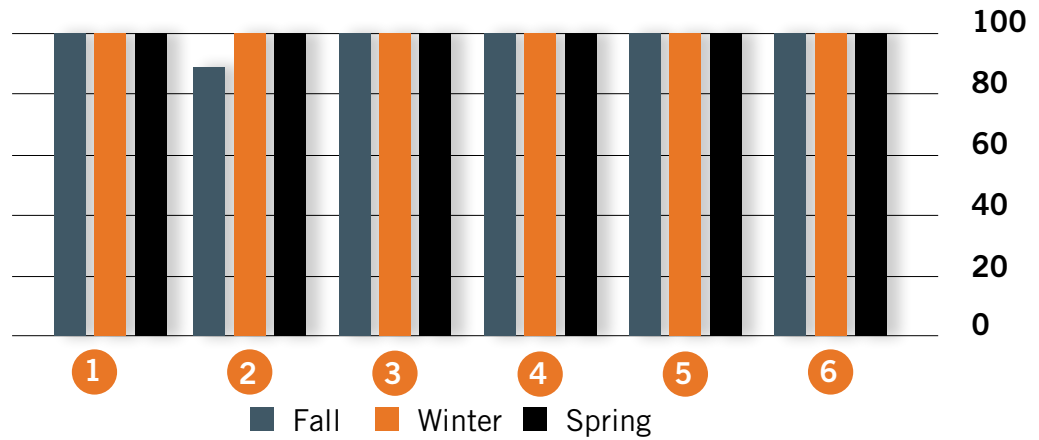
Number of Children with Disabilities:
Early Head Start: 16

MEDICAL INFORMATION ON EHS CHILDREN ENROLLED MORE THAN 45 DAYS

Indicator	2019
% of children who are up to date on medical exams	85%
% of children that received dental exams	76%
% of children with health insurance at end of year	99%
% of children with an ongoing source of health care	85%
% of children who are up to date on all immunizations	84%

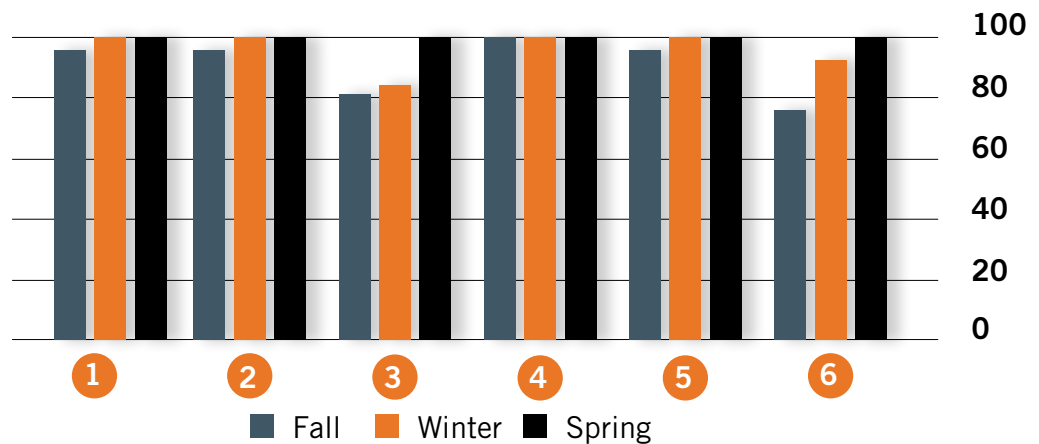
COMPARATIVE OUTCOMES REPORT 0 - 1 YEARS

1	Self-Emotional	100	100	100
2	Physical	88	100	100
3	Language	100	100	100
4	Cognitive	100	100	100
5	Literacy	100	100	100
6	Mathematics	100	100	100



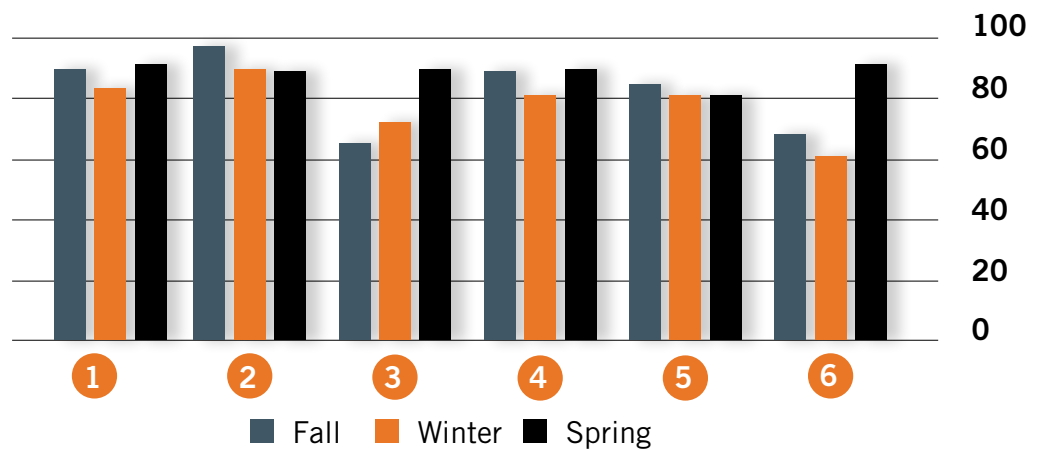
COMPARATIVE OUTCOMES REPORT 1 - 2 YEARS

1	Self-Emotional	96	100	100
2	Physical	96	100	100
3	Language	82	86	100
4	Cognitive	100	100	100
5	Literacy	96	100	100
6	Mathematics	76	93	100



COMPARATIVE OUTCOMES REPORT 2 - 3 YEARS

1	Self-Emotional	88	82	90
2	Physical	96	90	89
3	Language	67	72	89
4	Cognitive	88	80	89
5	Literacy	83	80	80
6	Mathematics	67	60	90



AUDIT INFORMATION

GSU EHS did not receive a Head Start Monitoring review for FY 2019. The last results came from a May 2018 Focus Area Two Monitoring Review. The result of the review was that GSU EHS was found in compliance with all applicable Head Start Performance Standards, laws, regulations and policy requirements.

Copies of the Compliance and Financial Audit Reports can be found on the Illinois General Auditor Page:
<https://www.auditor.illinois.gov/Audit-Reports/GOVERNORS-STATE-UNIVERSITY.asp>



Governors State

UNIVERSITY