

EARLY HEAD START

FAMILY DEVELOPMENT CENTER

GOVERNORS STATE UNIVERSITY



2020 ANNUAL REPORT

CONTENTS

1

- Letter from the Director

2

- About the Family Development Center

3

- Meet the Early Head Start Team
- Program Accomplishments
- Parent Involvement

4

- Community Engagement

5

- Funding





LETTER FROM THE DIRECTOR



It is with pleasure that I introduce to you the 2020 Annual Report. I can't tell you how proud I am of the quality of work this small program of 50 staff continues to put forth in these unprecedented times of a global pandemic and in the face of civil unrest. Staff of the FDC have tirelessly and selflessly striven to make FDC a safe and secure place for children and families during these trying times. I would also like to thank some of our community partners for supplying much needed donations for families. Cradles and crayons provided diapers, wipes, and cleaning supplies and Homewood Science Center provided at home learning kits which really allowed us to supplement the food, supplies, diapers, wipes, and formula our program was able to provide as well. We truly have been able to get through this together as a community.

Erin Soto

Erin Soto
Executive Director
Family Development Center
Governors State University
Home of the Jr. Jaguars
"Here, you are Home"

ABOUT THE FAMILY DEVELOPMENT CENTER

MISSION

The mission of the Family Development Center (FDC), a division of Governors State University's College of Education, is to provide accessible and exceptional education for children, families and students and to encourage lifelong learning and the development of the whole child.

VISION

The Family Development Center will be the Model Early Education Center for the South Suburbs.

OUR PHILOSOPHY

We believe that children learn in many different ways and children's learning is impacted by a variety of forces. When children are actively engaged and construct their own knowledge through hands-on activities in a stimulating environment, their growth and development flourish. We use a research-based, reasoned eclectic approach with Creative Curriculum as our play-based foundation. We honor diversity, creativity and joy in every experience and strive to provide security and emotional support for our children and families.

FACILITY

The Family Development Center is a Division of the College of Education at Governors State University and was originally established as a charter school in 2003.

The building, nested on campus among native prairie flowers and GSU's esteemed Sculpture Park, is a state of the art facility whose architectural design earned it a position as a Merit Award Finalist from the Chicago Building Congress.

The FDC's 50 employees serve up to 181 children with a \$2.8 M budget, ranking it in the top 15 in budget and size of programs in the country and one of the largest in the state of Illinois. Over this fiscal year, 220 children were served in our program by a total of 50 staff members.

PROGRAMS

The Family Development Center is designed to serve the needs of the surrounding community as well as university constituents. The FDC offers full-time care for children age birth to 12 years of age. In addition to center-based educational care, curriculum and support services are offered to pregnant women and home-based services are provided to families with children up to age two.

Family Development Center programs are supported by grants, donations and private tuition payments from parents. FDC is funded by three major grants: Early Head Start, Preschool for All, and Preschool Expansion.

Early Head Start is a year-round, federally funded program that provides comprehensive education and family support to low-income pregnant women and families with children age birth to three. This program provides 6 hours of center-based care in addition to home-based services with a focus on high-quality comprehensive services to support the whole family. Funding serves 50 children our center-based program, and 22 in our home-based programs.

At age three, our children may transition to our full day 10-month Preschool for All classrooms or Preschool for All Expansion classrooms. The goal of the Preschool for All program is to provide educational services to all 3- to 5-year-old and focuses on providing high-quality educational programs for children who are determined to be at risk of academic failure. We are funded for 94 children in this program.

Our full-day PreK options blend Preschool For All or Early Head Start grant funding with parent's tuition or state Child Care Assistance Payments to provide wrap around care for 11 hours of high-quality education and care for families that are working or in school full time.

When children turn five, they transition to Kindergarten in their local school districts. The Family Development Center continues to offer before-and-after childcare during the school year for children enrolled in Crete-Monee School District 201-U.

We also offer full-day summer camp open for 3–8-year-olds in the summer.

All center-based programs are licensed by the State of Illinois Department of Children and Family Services (DCFS) and are accredited by the National Association for the Education of Young Children (NAEYC). We are also an ExceleRate Gold Level program.

Proud to be in the
Gold Circle of Quality



MEET THE EARLY HEAD START TEAM

LEADERSHIP:

Executive Director: Erin Soto

Family Service Director: Jillian Roth

Health, Safety, and Nutrition Services: Claudia Nguyen

Education, Disabilities and Mental Health Services: Selene Willard

Center Director: Barb Calibraro

Business Manager: Michelle Adams

POLICY COUNCIL:

Chair: Keisha Ward- Center Based EHS

Vice Chair: Lori Olurin- Center Based EHS

Secretary: TBD

GOVERNING GROUP:

Chair: Shannon Dermer PH.D

Vice Chair: Catherine Balthazar, PH.D

Secretary: Natalia Ermasova, PH.D, Tim Harrington, PH.D, Kelly Chesta, Director, Crete-Monee Early Learning Center

PROGRAM ACCOMPLISHMENTS

On February 22nd, 2020 Early Development Professional Institute hosted its first workshop. The Mission of EDPI is to enhance the knowledge and skills of early childhood professionals and families through professional development opportunities that strengthen and sustain the Early Childhood workforce and provide meaningful outcomes for the children. The program offers discounted training workshops to early childhood educators targeting infant/toddler teachers in the south suburbs of Chicago. The following topics were offered:

- Full Steam Ahead! Keeping infants and toddlers on track
- Signs of Trauma in Early Childhood (online)
- Proof is in the Play- Data collection the preschool way (cancelled due to COVID)

REMOTE SERVICES

On March 17th, 2020, the Family Development Center had to close our doors due to the shelter in place ordered by Governor Pritzker. Our teachers quickly began to brainstorm ways to continue providing supportive services to all our children and families. Our Education staff created classroom YouTube channels, google classrooms, conducted weekly virtual small and large group meetings, with a focus on supporting the families emotionally during these unprecedented times. Teachers met with children and

families virtually, recorded classroom favorite transition songs, fingerplays, and even recorded their beloved classic classroom stories so the children could view anytime. Additionally, the Education Director and teachers organized a physically distanced drive through celebration to honor our preschoolers who were going off to kindergarten in the fall. Messages of encouragement were chalked along the driveway and signs were made with children's names congratulating them on a milestone of achievement. Learning packs were given to families that included developmentally appropriate materials that included construction paper, crayons, pencils, glue, scissors and much more.

PROFESSIONAL DEVELOPMENT/ TRAINING

During the shelter in place, all staff took advantage of the opportunity to participate in development and training suited to their professional needs. Staff completed over 2,000 hours of training in a variety of topics, well exceeding the required number training hours required by the National Association for the Education of Young Children. All staff were trained in Conscious Discipline a brain-base social-emotional learning framework, that builds resilience in children and families.

PARENT INVOLVEMENT

PARENT INVOLVEMENT ACTIVITIES

Policy Council – Policy Council is a monthly meeting held for elected EHS parents. Our Policy Council consists of 5 parents and 2 community members. The

meetings run for 12 months until annual elections take place in September at which that time new members are elected and/or old members are re-elected. Meals are served to children and families and childcare is provided.

- **August** – Open House
- **September** – How to Build Credit – 6
- **October** – Mental Health Pt. 2 – 7
- **November** – Parenting Curriculum – 6
- **December** – Parenting Curriculum – 0
- **January** – Tech Talk – 4
- **February** – Dad's Day – 13
- **March** – Kindergarten Transition – 0
- **April** – Covid Parenting – Digital
- **May** – Zoo Exploration – Digital
- **June** – Early Intervention Services – Digital
- **July** – Oral Health – Digital

FAMILY SUCCESS CORNER

Ember Smith started as an Early Head Start parent here at the Family Development Center. At that time, she was also a student at Governors State University and

a single mother. Ember began working at the Family Development Center as a Student Worker. Ember then had to transfer to Chicago State University in order to be able to finish her bachelor's degree in Chemistry. During which time she applied and obtained an extra help contract to continue employment at the Family Development Center. Ember also worked with her child's teacher and Family Support Specialist to assist her child in obtaining developmental services. All throughout the family's enrollment, Ember worked toward her Family Partnerships of completing her bachelor's degree with honors ahead of schedule and securing work where she would be able to procure funding to acquire an advanced degree. Ember is presently employed as the Office Support Specialist at the Family Development Center and has begun the required steps needed to start her master's degree program.

COMMUNITY ENGAGEMENT

HEALTH ADVISORY COMMITTEE

Special thanks to the following members of the Health Advisory Committee for their time and input on health data, self-assessment, under-enrollment and recruitment efforts:

- **Kathleen Lynch-Hale** – Early Learning Center
- **Caren Schranz** – GSU Occupational Therapy
- **Linda Paschall** – FDC Nurse Advisor
- **Georgia VanderBoegh** – Will County Health Department
- **Gia Washington** – Sertoma
- **Pat Krause** – Will County WIC
- **Rebecca Deang** – Will County Health Department, Community Health Educator AOK Network
- **Patrick McCarthy Will County** – Immunizations
- **Mark Chavez** – Family Christian Health Center

GSU EHS has Memorandum of Agreements with the following agencies:

Social Service:

- Prairie State Legal Services
- Illinois Action for Children
- University Park Library
- Workforce Services Division of Will County
- Village of University Park
- Illinois Network of Child Care Resource & Referral Agencies
- Proactive Community Services
- South Suburban Family Shelter
- Respond Now

Health:

- Will County Health Department
- Will County Community Health Center
- Sertoma Centre, Inc.
- Will County- WIC

Education/Disabilities:

- Crete-Monee High School
- Crete-Monee Early Learning Center
- Steger School District 194
- Child and Family Connections #15
- Child and Family Connections #12

COMMUNITY PARTNER SUCCESS STORY

Cradles to Crayons provides children birth to age 12, living in homeless, or low-income situations with essential items families need to thrive. FDC was grateful to partner with Cradles to Crayons to receive a generous donation of diapers, wipes, hygiene items and school supplies for our families during COVID-19.

FDC was grateful to partner with The Homewood Science Center whom graciously donated PopUp home science kits for families. PopUp Science is a community-based community-led program supporting families with hands-on STEM activities. During our center closure families were provided with take home science kits to engage in safely in their own homes.

FUNDING

BUDGET

FY20 FUNDING	
PROGRAM	TOTAL FUNDING
Early Head Start (January-December)	\$1,059,534
EHS COVID 19 One-Time Supplement	\$63,274
Non Federal Share	\$251,222
US Department of Agriculture Child and Adult Care Food Program Reimbursement (July-June)	\$92,371
Illinois Department of Human Services Child Care Subsidies (July-June)	\$740,122
ISBE Preschool for All (July-June)	\$450,069
ISBE Preschool Expansion (July-June)	258,696
Total Operating Budget	\$2,942,288

EHS BUDGET		
EARLY HEAD START	BUDGETED	ACTUAL
Personnel Salaries	\$610,211	\$572,424
Fringe Benefits	\$301,872	\$224,117
Travel	\$2,600	\$545
Equipment	\$0	\$0
Supplies	\$21,684	\$22,789
Other	\$43,670	\$18,850
Indirect Costs	\$79,499	\$56,133
Total	\$1,059,536	\$894,860
Food Program income	\$40,978	\$37,037

DEMOGRAPHIC BREAKDOWN OF FAMILIES AND CHILDREN

Single parent	Foster parent	Homeless	Two-Parent
52	1	2	8

Bi-racial	African American	Caucasian	Asian	Hispanic
5	61	7	1	2

WIC	Food Stamps	Cumulative Number of Children Served	Early Head Start
36	43		76

ACTUAL EARLY HEAD START AVERAGE MONTHLY ENROLLMENT			
QUARTER 1	QUARTER 2	QUARTER 3	QUARTER 4
Jan – 62 / 72	April – 62/72	July – 60/72	Oct – 41/72
Feb – 65/72	May – 62/72	Aug – 39/72	Nov – 37/72
March – 63/72	June – 61/72	Sept – 36/72	Dec – 38/72

626 / 864 = 72% Average Monthly Attendance



PERCENTAGE OF ELIGIBLE EARLY HEAD START CHILDREN SERVED

According to IECAM data, GSU EHS served 76 of the 1424 or 5% of the eligible children in the service delivery area..

Number of Children with Disabilities:
Early Head Start: 4

INDICATOR	2020 DATA
Children with health insurance at end of year	100
Percentage of children with an ongoing source of health care at the end of the year	84
Percentage of children who are up to date on a schedule of age appropriate preventive and well-baby care according to Illinois EPSDT schedule	71
Percentage of children who are up to date on all immunizations/all possible immunizations	88

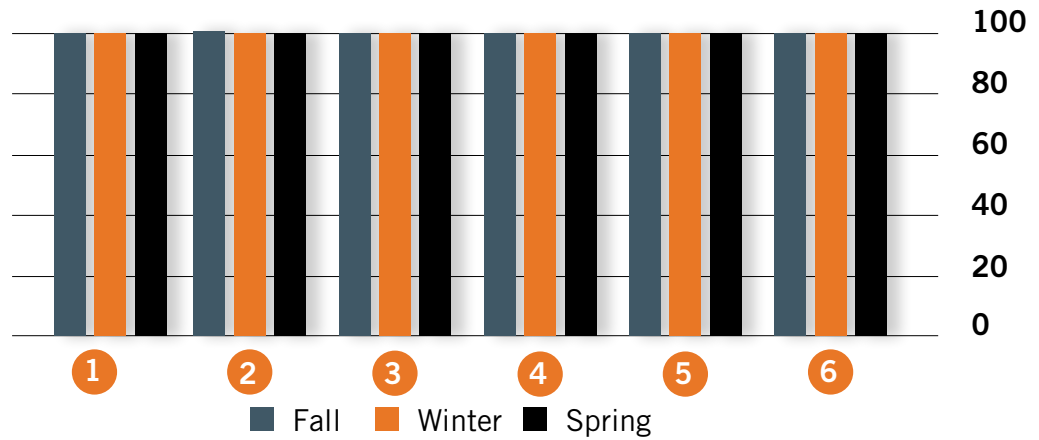
PREPARATION FOR KINDERGARTEN READINESS

FDC uses Teaching Strategies Gold as its formal child assessment system. Observations are recorded into the system and children’s levels of development are assessed and compared to widely held expectations for their age group. Assessments are held three times a year in the Fall, Winter and Spring, called checkpoints. The following data represents children who attended for all three checkpoints. A goal for

EHS is that 80% of children enrolled will meet or exceed widely held expectations by the end of the program year. For children ages 0-1 this generally means that they are meeting their developmental milestones. At age two, more emphasis is on literacy and mathematical skills. 100% of the children in this report met the 80% benchmark by the end of the program year.

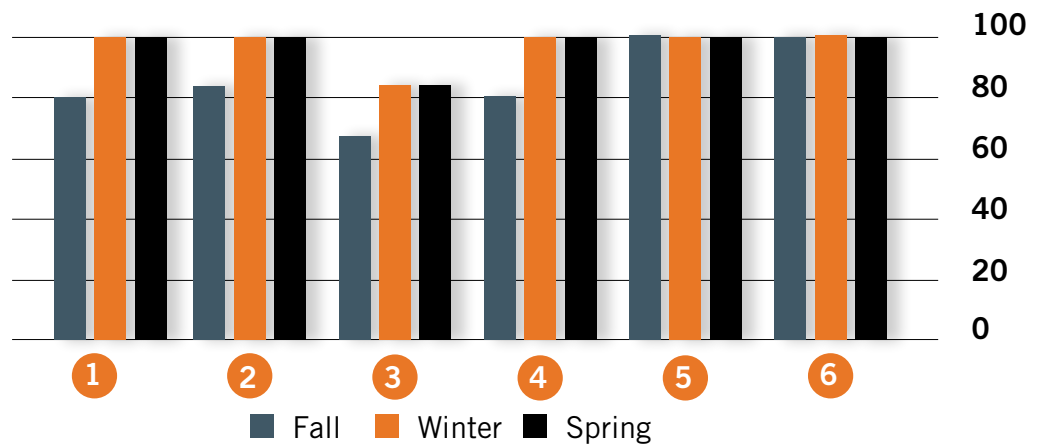
COMPARATIVE OUTCOMES REPORT 0 - 1 YEARS

1	Self-Emotional	100	100	100
2	Physical	100	100	100
3	Language	100	100	100
4	Cognitive	100	100	100
5	Literacy	100	100	100
6	Mathematics	100	100	100



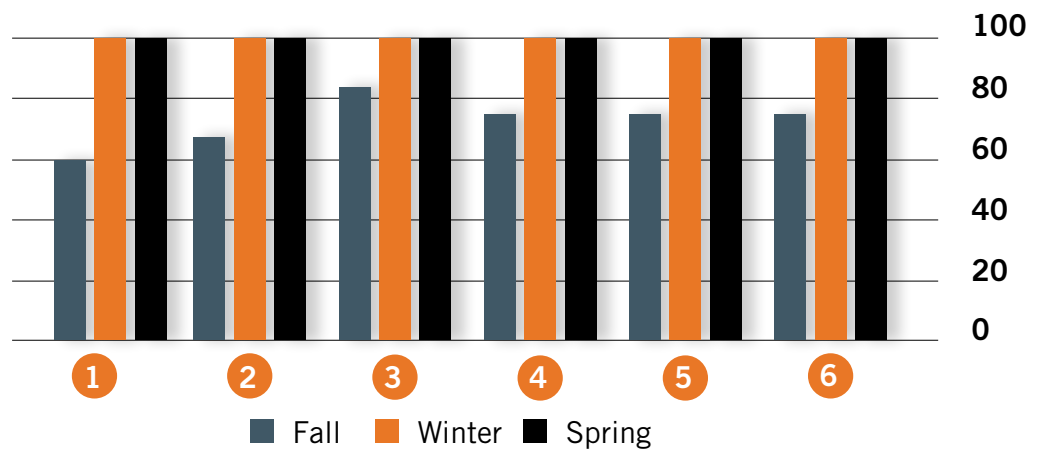
COMPARATIVE OUTCOMES REPORT 1 - 2 YEARS

1	Self-Emotional	80	100	100
2	Physical	83	100	100
3	Language	67	83	83
4	Cognitive	80	100	100
5	Literacy	100	100	100
6	Mathematics	100	100	100



COMPARATIVE OUTCOMES REPORT 2 - 3 YEARS

1	Self-Emotional	60	100	100
2	Physical	67	100	100
3	Language	83	100	100
4	Cognitive	75	100	100
5	Literacy	75	100	100
6	Mathematics	75	100	100



AUDIT INFORMATION

GSU EHS did not receive a Head Start Monitoring review for FY 2020. The last results came from a 2018 Focus Area Two Monitoring Review. The result of the review was that GSU EHS was found in compliance with all applicable Head Start Performance Standards, laws, regulations and policy requirements.

Copies of the Compliance and Financial Audit Reports can be found on the Illinois General Auditor Page:

<https://www.auditor.illinois.gov/Audit-Reports/GOVERNORS-STATE-UNIVERSITY.asp> For FY20 EHS received an audit for not meeting funded enrollment.



Governors State

UNIVERSITY