

BB2L BOUNCE BACK 2 LIFE
Recovery Network

FY2024

ASSET MAP



LIGHTS OF ZION MINISTRIES
LEAD AGENCY
FY2024

Introduction:

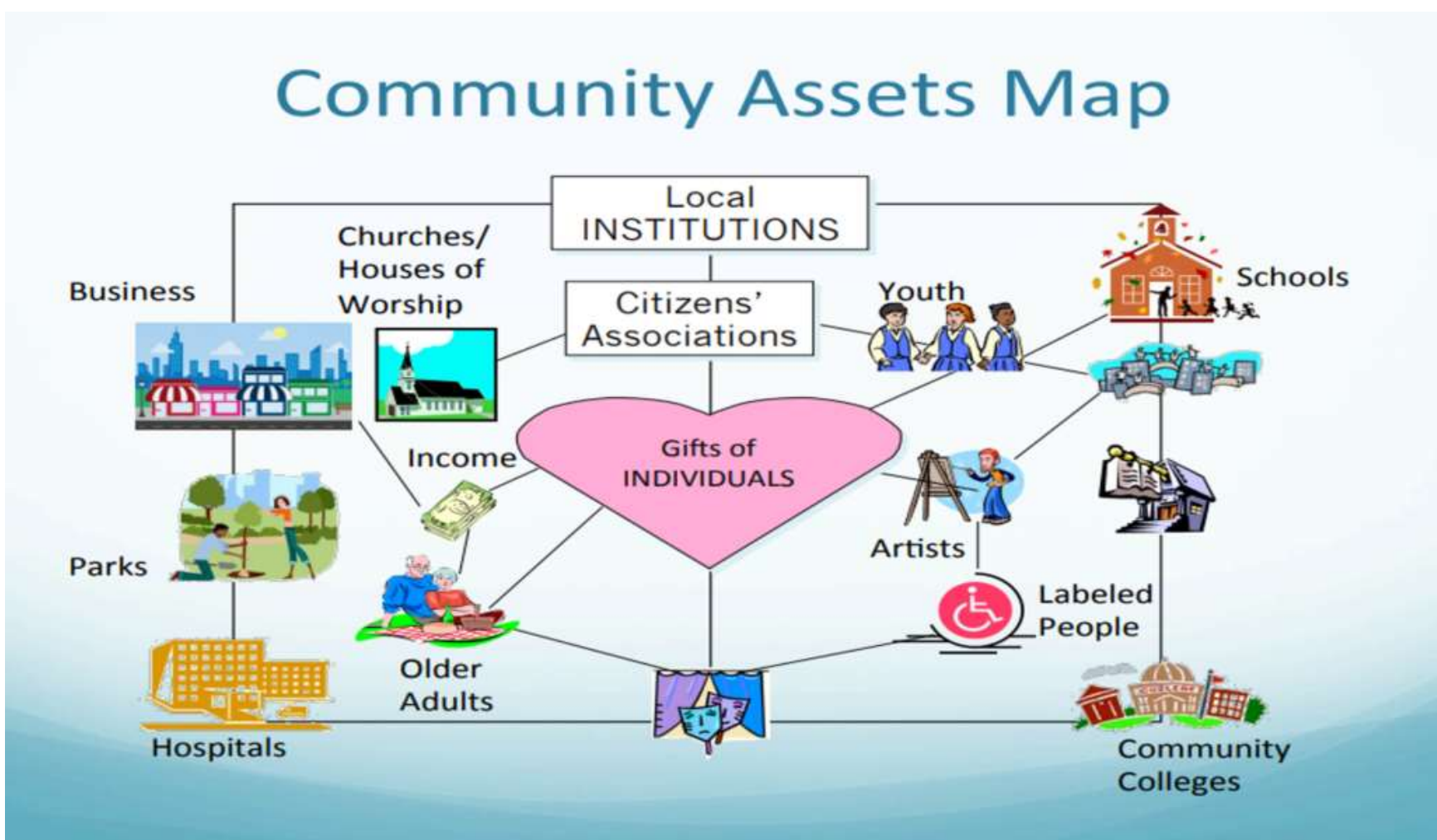
In the vibrant tapestry of our community, every individual's story is woven with threads of resilience, hope, and the unwavering spirit to overcome challenges. Among us are those who have embarked on the courageous journey of recovery from various adversities, each step a testament to their strength and determination. As we come together in support of our neighbors, friends, and family members on this transformative path, it becomes paramount to recognize the importance of a robust and compassionate network of resources.

This Asset Mapping Document stands as a testament to our collective commitment. Beyond its pages lies a comprehensive exploration of the existing resources available to those in recovery, ranging from healthcare facilities and counseling services to educational opportunities and employment assistance. These resources are the pillars upon which our community stands, offering vital support to those in need.

However, our dedication does not waver in the face of challenges. We acknowledge that there are gaps, essential elements missing from this tapestry of care. This document delves deep into these gaps, addressing the unmet needs of individuals in recovery. By identifying and understanding these deficiencies, we pave the way for progress. Our goal is not merely to point out what is lacking but to inspire action, to rally the community, stakeholders, and policymakers to fill these voids comprehensively.

In the pages that follow, we will explore not just the challenges but also the boundless opportunities for growth and support. By shining a light on the uncharted territories of recovery resources, we aim to foster a community where every person, regardless of their past struggles, can find solace, assistance, and ultimately, a pathway to a brighter, more stable future.

Together, let us embark on this journey of discovery, empathy, and empowerment. Through collaboration and understanding, we can build a community where every individual in recovery not only survives but thrives, where their stories of resilience inspire generations to come. Welcome to a narrative of hope, a roadmap to a more compassionate and inclusive community.



Community Asset Map: Southside of Greater Roseland, Chicago

Service	Address	Phone	Website
Immunization Clinics			
Austin Health Center of Cook County	4800 W. Chicago Avenue, Chicago IL 60651	773-826-9600	
Englewood Neighborhood Health Center	641 W. 63rd Street, Chicago IL 60621	312-745-1000	
Lower West WIC	1643 W. Cermak Road, Chicago IL 60608	312-747-1650	
Trina Davila Community Service Center	4345-47 W. Armitage Avenue, Chicago IL 60639	312-742-8724	
Englewood Family Health Center	1135 W. 69th Street, Chicago, IL 60621	773-483-5090	
Greater Lawn WIC	4150 W. 55th Street, Chicago, IL 60632	312-747-5416	
Roseland Community WIC	11255 S. Michigan Avenue, Chicago, IL 60628	773-785-1173	
Uptown Neighborhood Health Center	845 W. Wilson Avenue, Chicago, IL 60640	312-742-3227	
Garfield Center	10 S. Kedzie Avenue, Chicago, IL 60612	312-746-5400	
King Center	4314 S. Cottage Grove Avenue, Chicago, IL 60653	312-747-2300	
South Chicago	8759 S. Commercial Avenue, Chicago, IL 60617	312-747-0500	
Englewood Center	845 W 69th Street, Chicago, IL 60621	312-747-0200	
North Area	4740 N. Sheridan Road, Chicago, IL 60640	312-744-2580	
Trina Davila	4357 W. Armitage Avenue, Chicago, IL 60639	312-744-2014	
Children and Youth Services			
Parenting Resource Network Warmline	Phone: 847-675-3555		
Child Support	Phone: 800-447-4278	TTY: 800- 526-5812	
Child Care Assistance (Child Care Aware)	Phone: 800-424-2246	TTY: 866- 278-9428	Child Care Finder
After-School Chicago Program Locator	After School Chicago		
Youth Ready Chicago	Youth Ready Chicago		
Medical Care and Nutrition Services			
Medicaid/All Kids Hotline	Phone: 866-255-5437	TTY: 877- 204-1012	
Greater Chicago Food Depository	Phone: 773-247-3663		
Food Stamps Hotline	Phone: 800-843-6154		
WIC Program	Phone: 800-323-4769		

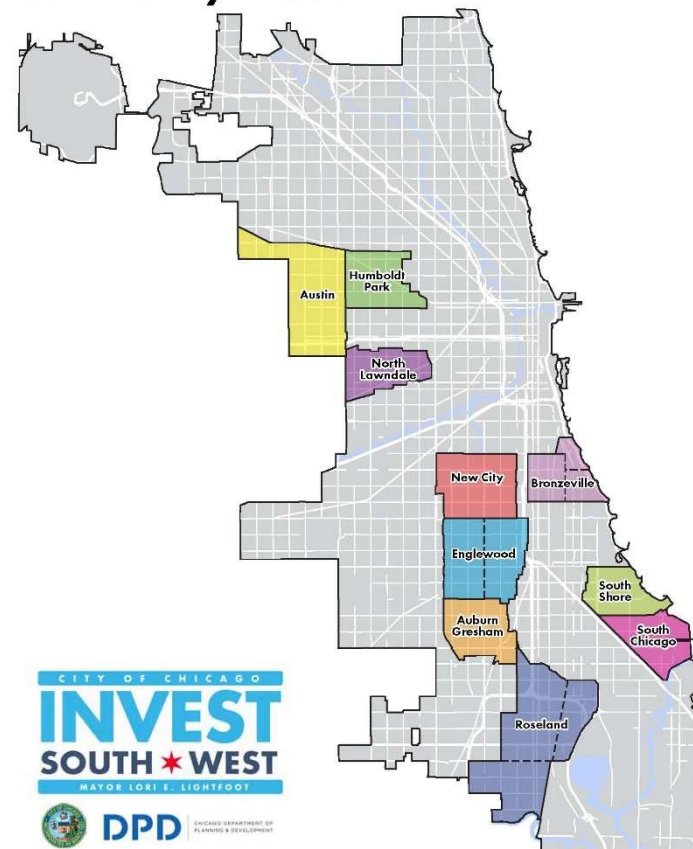
This table provides a clear overview of the services, addresses, phone numbers, and relevant websites for easy reference.

GREATER ROSELAND

Category	Assets
Healthcare Facilities	Roseland Community Hospital Roseland Clinic Greater Roseland Health Center
Educational Institutions	Harold Washington Elementary School Julian High School Roseland Christian School
Social Support Networks	Roseland Community Center Greater Roseland Family Services Southside Counseling Center
Cultural Assets	Roseland Public Library Southside Arts Collective Greater Roseland Historical Society
Recreational Areas	Roseland Park Southside Community Gardens Roseland Recreation Center
Emergency Services	Roseland Police Station Fire Station #42
Religious Institutions	Greater Roseland Baptist Church St. Mary's Catholic Church Southside Mosque
Transportation Hubs	Roseland Metra Station Bus Stops along Major Routes
Community Organizations	Southside Community Development Association Greater Roseland Neighborhood Council
Local Businesses	Grocery Stores Pharmacies Small Retail Shops
Other Services	Legal Aid Clinics Employment Assistance Centers Financial Counseling Services

This table provides a clear and organized overview of the assets in the Southside of Greater Roseland, Chicago.

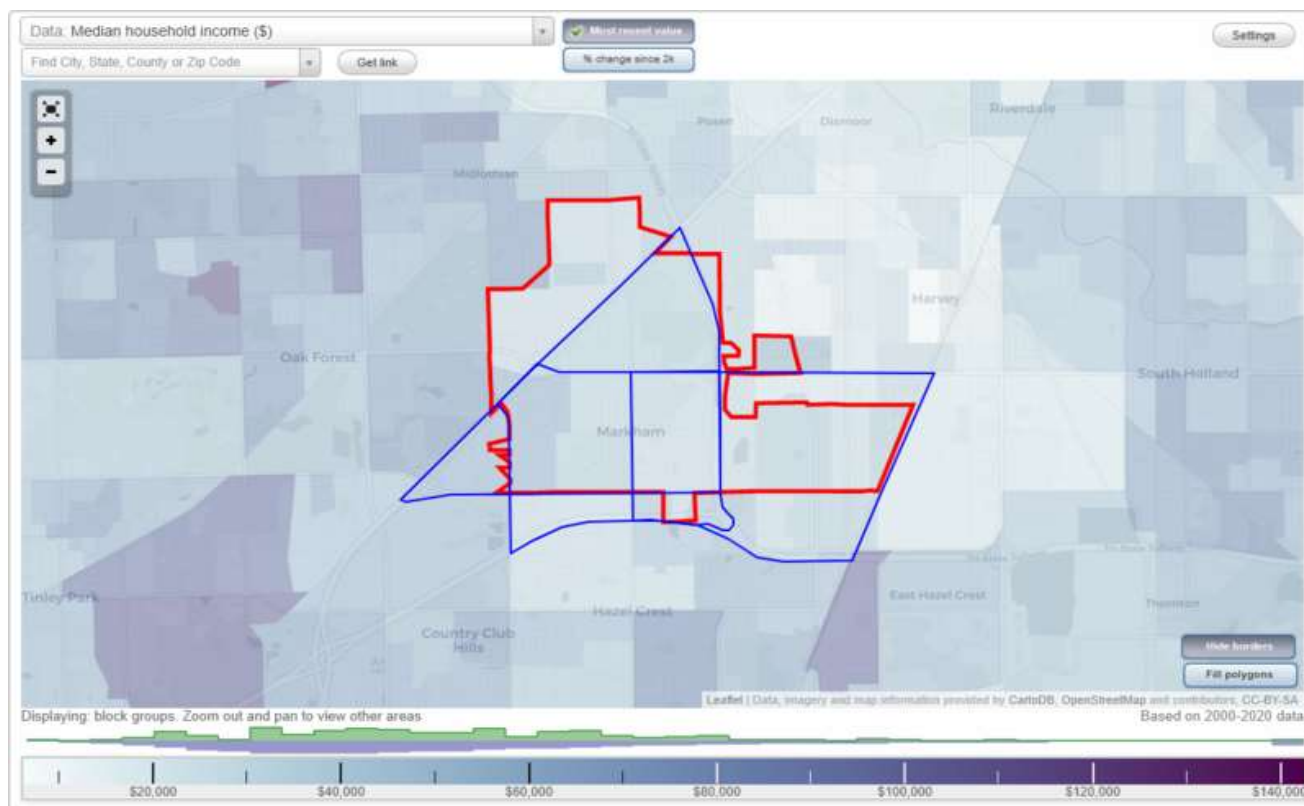
Community Areas



MARKHAM ILLIOIS

Category	Assets
Healthcare Facilities	Markham Medical Center Markham Community Clinic< South Suburban Hospital
Educational Institutions	Markham Elementary School Prairie Hills Junior High Schoo Southland College Prep Charter High School
Social Support Networks	Markham Community Center South Suburban Family Services Markham Counseling Center
Cultural Assets	Markham Public Library Markham Arts Center Markham Historical Society
Recreational Areas	Markham Park District Community Sports Complex Markham Aquatic Center
Emergency Services	Markham Police Department Markham Fire Department
Religious Institutions	First Baptist Church of Markham St. Mark Catholic Church Markham Mosque
Transportation Hubs	Markham Metra Station Bus Stops along Major Routes
Community Organizations	Markham Community Development Association Markham Neighborhood Council
Local Businesses	Grocery Stores Pharmacies Small Retail Shops
Other Services	Legal Aid Clinics Employment Assistance Centers Financial Counseling Services

This table provides a clear and organized overview of the assets in Markham, IL.



RIVERDALE IL

Category	Assets
Healthcare Facilities	Riverdale Medical Center South Suburban Hospital Community Health Clinics
Educational Institutions	Riverdale Elementary School Carver Military Academy South Suburban College
Social Support Networks	Riverdale Community Center South Suburban Family Services Riverdale Counseling Center
Cultural Assets	Riverdale Public Library Local Art Galleries Community Events and Festivals
Recreational Areas	Riverdale Park District Community Sports Complex Public Parks and Playgrounds
Emergency Services	Riverdale Police Department Riverdale Fire Department Emergency Medical Services
Religious Institutions	Various Churches and Places of Worship Interfaith Community Centers
Transportation Hubs	Riverdale Metra Station Bus Stops along Major Routes Accessible Roads and Highways
Community Organizations	Riverdale Community Development Association Local Neighborhood Watch Groups Youth and Senior Citizen Centers
Local Businesses	Grocery Stores Pharmacies Local Restaurants and Cafes
Other Services	Legal Aid Clinics Employment Assistance Centers Financial Counseling Services

This table provides a clear and organized overview of the assets in Riverdale, IL.

