



ROSC
DECEMBER 18TH



Thank you!





NAMI

National Alliance on Mental Illness

Southwestern
Illinois



Public Health Department



THE NEXT NETWORK



HSHS
St. Francis
Hospital



Memorial
Health



THE AVIARY
RECOVERY CENTER

CROSS OVER
MINISTRIES



CENTERSTONE





APPROVAL OF MINUTES

NOVEMBER'S MINUTES

NEW MEMBER INTRODUCTIONS

WHO ARE YOU?

WHAT DO YOU DO?

WHY ROSC?



**SHARE YOUR NAME, TITLE, AND
ORGANIZATION IN THE CHAT
PLEASE!**



**DON'T FORGET TO
SIGN THE ROSTER
SO WE KNOW YOU
WERE HERE!**

#EVENTS

#INPATIENT

#HOUSING

#MENTAL-HEALTH

#TRANSPORTATION

LET'S TALK ABOUT
SLACK BABY...

LET'S TALK
ABOUT MCPHD...

Upgrade Plan

- Channels
- # dental-resources
- # **domestic-violence-resources**
- # events
- # food-resources
- # **group-meetings**
- # harm-reduction-resources
- # housing
- # inpatient-access
- # local-networking-meetings
- # macoupin-county
- # medical-resources
- # mental-health-resources
- # miscellaneous-resources
- # mobile-resources
- # montgomery-county
- # peer-support-services
- # pregnancy

Unread mentions

Add a bookmark

rosc-recovery-oriented-systems-of-care

@Elyse Schoen created this channel on December 4th. This is the very beginning of # rosc-recovery-oriented-

Add description

Add coworkers

Monday, December 4th



Elyse Schoen 2:14 PM

Joined #rosc-recovery-oriented-systems-of-care. Also, Michelle Dettwiler and 12 others joined.

Rich text formatting options: Bold, Italic, Text color, Background color, Bulleted list, Numbered list, Link, Unlink, Embed

Message #rosc-recovery-oriented-systems-of-care

+ Rich text formatting options: Bold, Italic, Text color, Background color, Bulleted list, Numbered list, Link, Unlink, Embed

Please Welcome

TASC'S
CHOICES

DEFLECTION TEAM



Treatment Alternatives for Safe Communities (TASC)

Deflection In Action: A Look at Deflection in Across the State

Presented to:

Macoupin County ROSC

Stephanie Nevilles, BS, CADC
Acting Director of Deflection
December 18th, 2023

Deflection Sites Across the State

- Cook County Deflection
 - The Work (Pathway/Referral/Outreach)
 - The Collaboration (law enforcement/community partners)
- Deflection outside of Chicago
 - Deflection downstate (Central & Southern IL)

An overview of Cook County Deflection

Cook County Deflection

- **Naloxone Plus & Active Outreach**
- **Deflection Sites**
 - Harvey Police Department (Sex Workers/Opioid)
 - Schiller Park (SUD & MH)
 - Justice Police Department (Opioid/SUD)
 - Dixmoor Police Department (Opioid/SUD)

Cook County Deflection Continued

- **Services Provided**
 - SUD treatment
 - Mental Health
 - Housing
 - Other support services (employment/food/Medicaid assistance...)

Testimonials

- Client was a victim of human trafficking...struggle with both MH & SUD...client agreed to SUD TX and is currently in detox as well as working with TASC to receive mental health services. (Cook County Referral)
- Client was in need of residential treatment and clothing...client was referred to residential treatment...once completed was accepted into the housing program in Belleville, IL. (Southern Illinois)

Deflection Across Illinois

East St. Louis Community Engagement Response Team

- **Victims of Violent Crimes**
- **PSEG/Illinois State Police**
- **Community Partners**
- **Number of Referrals serviced since inception**

Southern Illinois Community Engagement Response Team

- **Substance Use Disorder**
- **Mental Health**
- **Community Partners**
- **Services Rendered**

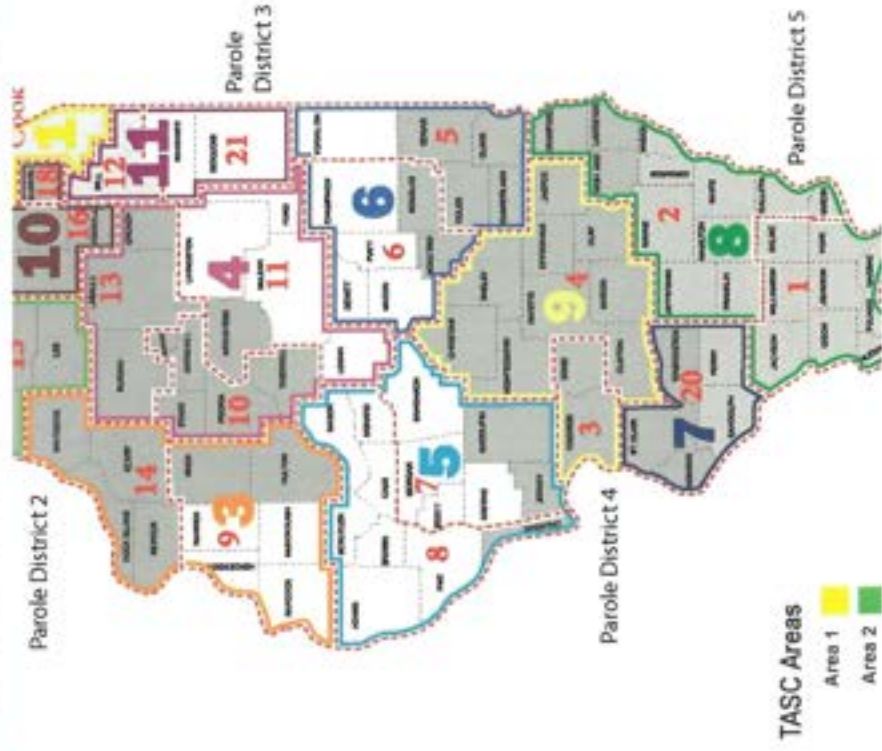
Springfield Engage Empower Deflect (SEED)

- Homeless
- Substance Use Disorder
- Mental Health
- Victim of Violent Crimes

CHOICES South & North

- **Substance Use Disorder**
- **Mental Health**
- **Coverage**
- **Services**

TASC Deflection Partnerships Across Illinois



TASC DEFLECTION IN THE NEWS

SEPTEMBER 15, 2022

'Deflection' Opens a New Path for Justice Crime Reduction

BY TASC STAFF @TASCCHJ



Sex Offenders Show Deflection Impact on Communities

According to newly released research¹ funded by the National Institute of Justice and made possible by the RAND Corporation, Illinois Criminal Justice Authority (ICJA), and TASC, a CJAIS program has shown a reduction in recidivism for sex offenders. The study also found that the program has a positive impact on the community, including a reduction in the number of sex offenses and a reduction in the number of sex offenders in the state.

1. Leaders and members of deflection programs use the program to help a wider range of people, including those who are not currently in the criminal justice system.
2. Deflection is associated with a reduction in program recidivism as well as the use of the criminal justice system.
3. Deflection is associated with a reduction in the number of sex offenses and a reduction in the number of sex offenders in the state.
4. Deflection can help ease the strain of responding to the rapid rise in sex offenses while helping to effectively address and reduce harm associated with substance use disorder and for special needs.
5. Through a target approach and outreach, deflection can help address unique needs of individuals with substance use disorders and help reduce the burden on the criminal justice system.
6. Deflection outcomes are positive and participants reported that they generally had positive experiences with deflection, which is consistent with their previous and/or expected experiences with the courts.
7. Deflection offers one promising response to public concerns about drug problems.

The RAND Corporation is a research organization that develops solutions to public policy challenges to help make communities safer, healthier, and more prosperous. www.rand.org

Conducted by (1) the Illinois Criminal Justice Authority (ICJA) in a state agency dedicated to supporting the administration of criminal justice, ICJA works to ensure the most effective response to Illinois' criminal, delinquent, and juvenile justice needs at

ICJA, 3000 South 4th

FOR IMMEDIATE RELEASE

February 14, 2023

CONTACT:

ICJHS – Maria Kroll@icjhs.org
 ISP – Maria.Kroll@icjhs.org
 ICJA – Cris@icja.org

ISP, IDHS, AND TASC EXPANDING DEFLECTION INITIATIVE TO IMPROVE COMMUNITIES

SPRINGFIELD – The Illinois State Police (ISP) and the Illinois Department of Human Services (IDHS) and its Illinois Criminal Justice Authority (ICJA), continue to expand the Deflection and Pre-Arrest Diversion (DPAD) initiative across the state. Deflection is a program that allows individuals who would be served by the behavioral health system, by addressing the behavioral health issues that often are the cause of criminal justice involvement, to receive treatment and support services that often are not available through the criminal justice system. DPAD can reduce recidivism and strengthen communities.

ISP and IDHS have been partnering with Treatment Alternatives for Sex Communities (TASC) to expand the DPAD initiative in the Lake Erie and Southern Illinois. TASC is a non-profit that advocates for a holistic approach to substance use and mental health conditions through direct services, peer support, and coaching. ISP, IDHS, and TASC have been working through the East St. Louis P

**Collaboration Equals
Change:**

Law Enforcement

Community

Participants

DEFLECTION



A collaborative intervention



Connects public safety and
public health systems



To create community-based
pathways to recovery support
services



WITHOUT ENTRY INTO THE
LEGAL SYSTEM!!!

Thank you.

Stephanie Nevilles, BS, CADC Acting Director

TASC, Inc. of Illinois

snevilles@tasc.org

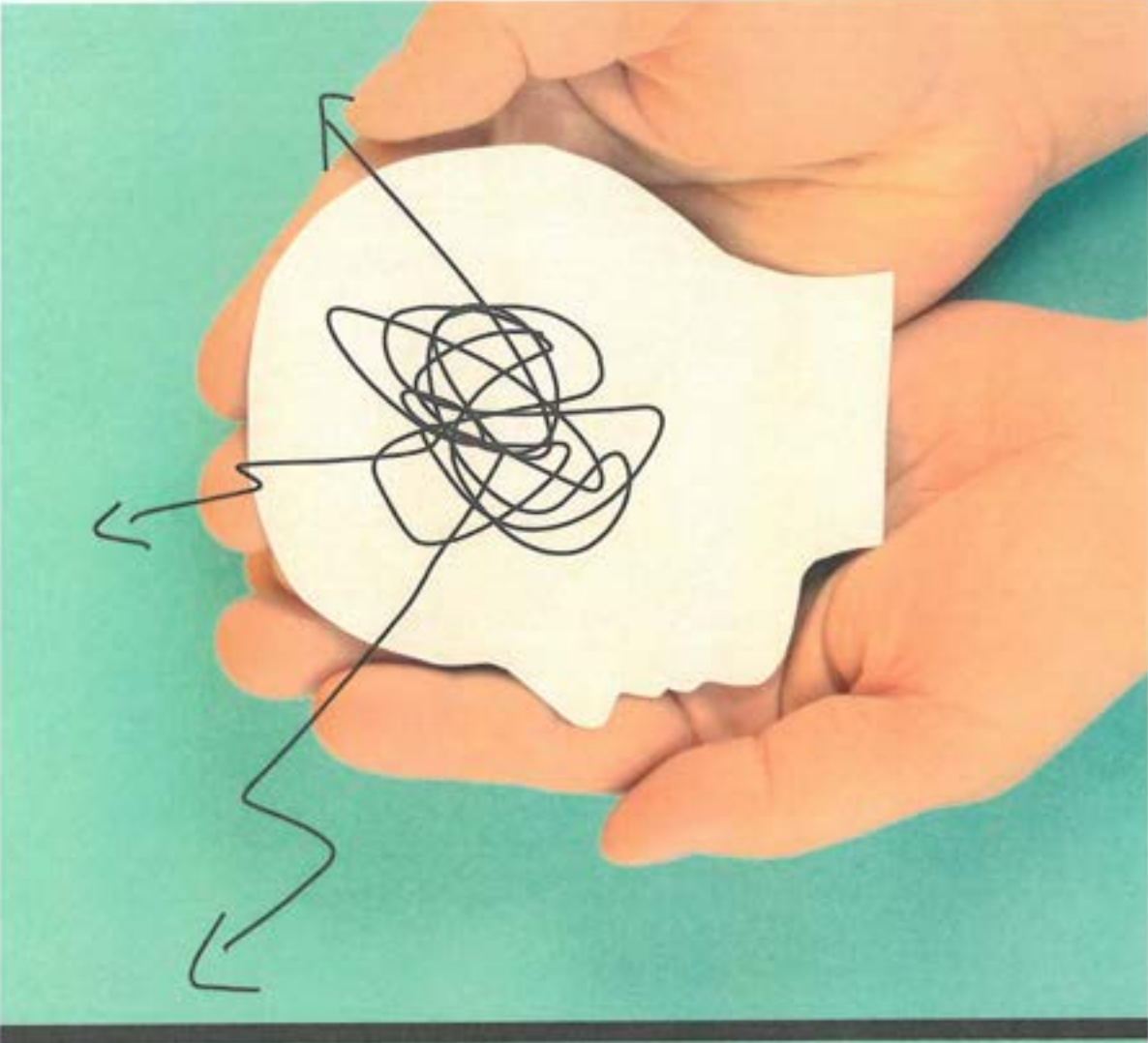
618-792-2562 m

618-277-0410 off

Questions?



Please welcome
Ron Howard
-with-
Montgomery County
Health Department





Crisis Care Continuum

Ron Howard, 590 program director

SAMHSA Guidelines for crisis system of care

- National Guidelines for Behavioral Health Crisis Care
- Best Practice Toolkit
- Completed in 2020
- Provides guidelines for crisis system of care
- <https://www.samhsa.gov/sites/default/files/national-guidelines-for-behavioral-health-crisis-care-02242020.pdf>

3 Pillars of Crisis Care

- Someone to call. This is provided by 988
- Someone to talk to. This is mobile crisis response
- Somewhere to go. Drop off centers not yet available in the counties.

988

- 988 is federally funded program, and takes over the old suicide hotline. It is run nationally by Vibrant.
- Illinois Department of Human Services was given a grant by Vibrant to establish 988 call centers in Illinois.
- PATH in Bloomington, IL is our local 988 call center, and covers much of Illinois. They field over 10,000 calls in a month on average.
- 988 is a bridge to local 590 call centers, when mobile crisis is needed.
- Montgomery County Sheriff's Office is our local 590 call center and dispatches mobile crisis when needed.

Mobile Crisis Response Team

- MCRT operates under the authority of the Community Emergency Services and Support Act (CESSA)
<https://ilga.gov/legislation/ilcs/ilcs3.asp?ActID=4210&ChapterID=11>
- (1) whenever possible, ensure that individuals experiencing mental or behavioral health crises are diverted from hospitalization or incarceration and are instead linked with available appropriate community services;
- (2) include the option of on-site care if that type of care is appropriate and does not override the care decisions of the individual receiving care. Providing care in the community, through methods like mobile crisis units, is encouraged. If effective care is provided on site, and if it is consistent with the care decisions of the individual receiving the care, further transportation to other medical providers is not required by this Act;

MCRT (Continued)

- (3) recommend appropriate referrals for available community services if the individual receiving on-site care is not already in a treatment relationship with a service provider or is unsatisfied with their current service providers. The referrals shall take into consideration waiting lists and copayments, which may present barriers to access; and
- (4) subject to the care decisions of the individual receiving care, provide transportation for any individual experiencing a mental or behavioral health emergency. Transportation shall be to the most integrated and least restrictive setting appropriate in the community, such as to the individual's home or chosen location, community crisis respite centers, clinic settings, behavioral health centers, or the offices of particular medical care providers with existing treatment relationships to the individual seeking care.

Limitations of LE/ CESSA

- a) Law enforcement responsibility for providing mental and behavioral health care. In any area where mobile mental health relief providers are available for dispatch, law enforcement shall not be dispatched to respond to an individual requiring mental or behavioral health care unless that individual is (i) involved in a suspected violation of the criminal laws of this State, or (ii) presents a threat of physical injury to self or others.
- Without regard to an assessment of threat to self or threat to public safety, law enforcement may station personnel so that they can rapidly respond to requests for assistance from mobile mental health relief providers if law enforcement does not interfere with the provision of emergency response or transportation services.

Limitations of MCRT

- (b) Mobile mental health relief provider involvement in involuntary commitment. In order to maintain the appropriate care relationship, mobile mental health relief providers **shall not in any way** assist in the involuntary commitment of an individual beyond (i) reporting to their dispatching entity or to law enforcement that they believe the situation requires assistance the mobile mental health relief providers are not permitted to provide under this Section; (ii) providing witness statements; and (iii) fulfilling reporting requirements the mobile mental health relief providers may have under their professional ethical obligations or laws of this State.
- Department of Human Services has stated that we are not to complete petitions or certificates, when this law goes into effect July 1st, 2024.

A place to go

- A drop off center would be a place for individuals in crisis, subject to their care decisions, to have immediate access to for psychiatric and psychological stabilization. Ideally, these centers are 24/7/365. Many counties, including Montgomery and Macoupin, do not have these types of centers yet.
- Hope Home in Macoupin County is a respite center for individuals in crisis that provides support. Admission is subject to their guidelines.
- Haven Home of Hope in Montgomery County is a place that offers support for people in crisis in Montgomery County as a place for temporary shelter, meal, and a shower. Admission is subject to their guidelines. The home will open to the public in February.



Questions?

*Happy
Holidays*

JOIN US IN 2024

JAN 22



Tell Us

HOW WE DID!



Scan me



*to complete the
evaluation survey*