

THREE CORDS STRONG

STRETIGIC PLAN

SO WHAT ARE YA GONNA DO ABOUT IT?

COMMUNITY NEEDS ...

COMMUNITY PLAN...



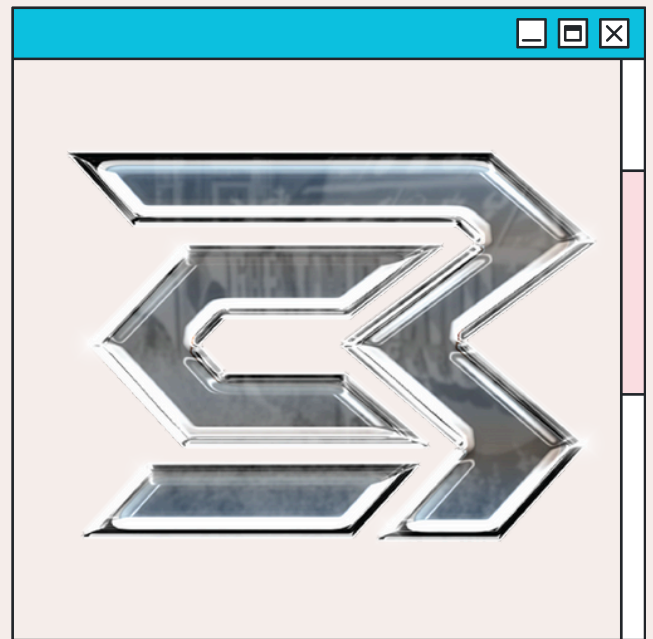
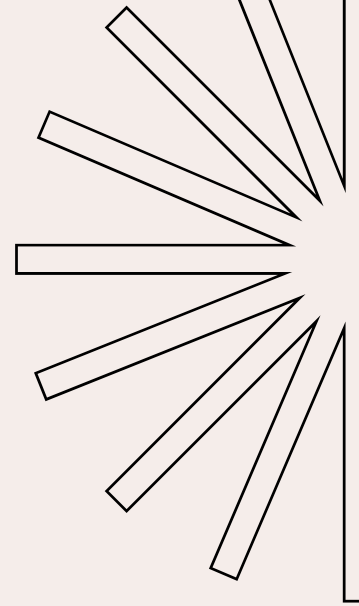
EDITOR'S

NOTE

our top picks for spring



Hi there and welcome to the Three Cords Strong Strategic Plan!



This Three Cords Strong, Recovery Oriented Systems of Care (ROSC), Strategic Plan outlines the direction and prioritizes the activities aimed at enhancing recovery support within the community.

Your Brand Identity

The Recovery Oriented Systems of Care Strategic Plan sets the direction and prioritizes the activities that will increase recovery supports in the community

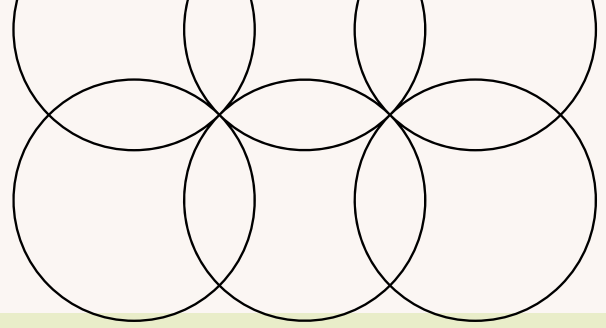
MISSION

At Three Cords Strong, our mission is to empower individuals on their recovery journeys by weaving together the essential strands of personal growth, family support, and community resilience. We believe that recovery is a continuous journey rather than a final destination and strive to embrace and support individuals on their unique paths to recovery.

VISION

Three Cords Strong ROSC Alliance envisions a world where recovery is celebrated as a lifelong journey, weaving the threads of personal growth, family bonds, and community support into a resilient tapestry not easily broken.

Purpose



The purpose of establishing the strategic plan below is to dismantle barriers and to set the stage for achieving the goals of the Recovery Oriented Systems of Care (ROSC) by facilitating intention-driven objectives and undertakings. These objectives will serve as benchmarks for evaluating the success of the ROSC Council and guiding its members towards collective empowerment and community resilience



Strategic planning is an organizational activity rooted in social justice, designed to set priorities, focus energy and resources, and strengthen operations. It ensures that members and stakeholders work towards common goals, establish consensus around desired outcomes, and adapt the council's direction to respond to a dynamic and evolving environment.



Overarching Vision and Mission for Strategic Plan:



MISSION | STATEMENT

BUILD AND EMPOWER
COMMUNITIES OF
RECOVERY

At Three Cords Strong, our mission is to enhance health, wellness, and recovery for every individual and family, particularly those facing or at risk of substance use and mental health challenges. We are committed to nurturing healthy and safe communities, knowing that strength lies in unity

"FRIENDS AND
NEIGHBORS, WE STAND
TOGETHER TO BUILD
AND UPLIFT
COMMUNITIES OF
RECOVERY! LET'S
CELEBRATE!"



Overarching Vision and Mission for Strategic Plan:

Central to Three Cords Strong's vision, our goal within the Recovery Oriented Systems of Care (ROSC) is to coordinate treatment for addiction and co-occurring disorders, engaging the entire community in this transformative effort. We aim to dismantle stigma surrounding addiction and co-occurring disorders. If our community recognizes the severity of addiction's impact, affecting the lives of loved ones, then the entire community—not just those in recovery—will unite to contribute to the solution.

We firmly believe that "recovery happens within the community." When community members understand the profound impact of addiction and alcoholism, reaching epidemic levels, we hope they will be motivated to join efforts toward resolution. Those on the path to recovery stand a better chance at achieving sobriety, health, and a fulfilling life when the community collaboratively provides and facilitates access to a wide array of services and support—healthcare, psychiatric services, sober living, childcare, recreational opportunities, and more. The more resources available to those seeking recovery, the stronger their foundation for lasting change.

Moreover, the ROSC endeavors to empower our communities to advocate, educate, and provide recovery support services for individuals overcoming Substance Use Disorders (SUD) and Co-Occurring Disorders (COD). Together, let us build a brighter future!



SWAT

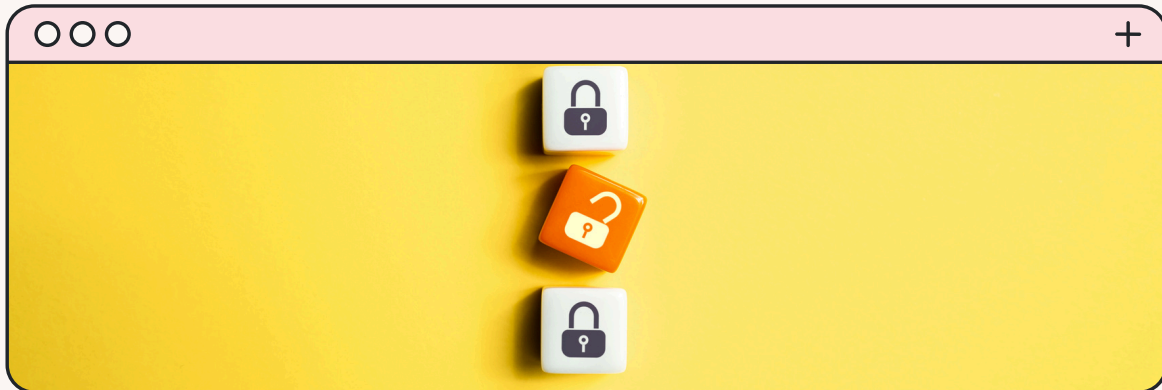


SWAT | STRENGTHS

1. STRONG COMMUNITY ENGAGEMENT: ACTIVE INVOLVEMENT AND SUPPORT FROM COMMUNITY MEMBERS, LEADERS, AND STAKEHOLDERS.
2. DATA-DRIVEN APPROACH: UTILIZATION OF COMPREHENSIVE NEEDS ASSESSMENTS AND DATA ANALYSIS TO GUIDE STRATEGIC INITIATIVES.
3. COLLABORATIVE PARTNERSHIPS: ESTABLISHED RELATIONSHIPS WITH LOCAL ORGANIZATIONS, PROVIDERS, AND GOVERNMENTAL AGENCIES, INCLUDING BRIGHT STAR COMMUNITY OUTREACH, 003RD DISTRICT POLICE DEPARTMENT, HISTORIANS OF THE BRONZEVILLE HISTORICAL SOCIETY, AND LIKE-MINDED COMMUNITY SUPPORT ORGANIZATIONS.
4. LEADERSHIP COMMITMENT: DEDICATED LEADERSHIP FOSTERING RECOVERY-ORIENTED SYSTEMS OF CARE PRINCIPLES.
5. RESOURCE UTILIZATION: EFFICIENT USE OF AVAILABLE RESOURCES TO MAXIMIZE IMPACT AND REACH WITHIN THE COMMUNITY.
6. INNOVATIVE PROGRAMMING: DEVELOPMENT AND IMPLEMENTATION OF INNOVATIVE PROGRAMS TO MEET DIVERSE COMMUNITY NEEDS.
7. COMMUNITY EDUCATION AND AWARENESS: INITIATIVES AIMED AT EDUCATING THE COMMUNITY ABOUT SUBSTANCE USE DISORDERS, MENTAL HEALTH, AND RECOVERY PATHWAYS.
8. CULTURAL SENSITIVITY: INTEGRATION OF CULTURALLY SENSITIVE PRACTICES AND SERVICES TAILORED TO DIVERSE COMMUNITY DEMOGRAPHICS.
9. STRATEGIC COMMUNICATION: EFFECTIVE COMMUNICATION STRATEGIES, INCLUDING SOCIAL MEDIA, TO ENGAGE AND INFORM STAKEHOLDERS.
10. COMMITMENT TO EQUITY: FOCUS ON ADDRESSING DISPARITIES AND PROMOTING EQUITABLE ACCESS TO RECOVERY SERVICES AND RESOURCES.



SWAT

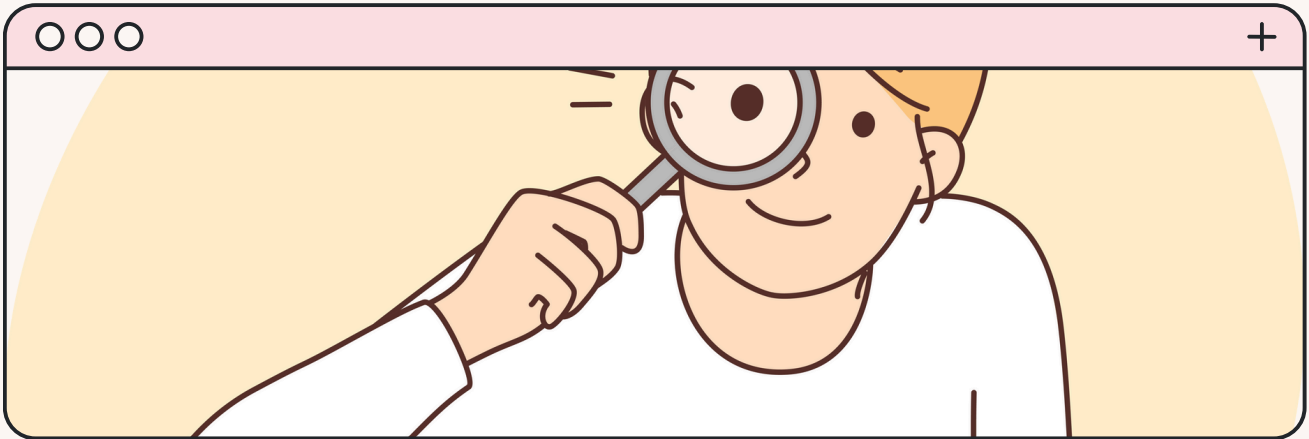


SWAT | WEAKNESSES

1. RESOURCE CONSTRAINTS: DEPENDENCE ON LIMITED FUNDING SOURCES AND POTENTIAL RESOURCE SHORTAGES, EXACERBATED BY LIMITED FOOD AND HOUSING RESOURCES.
2. STIGMA AND PERCEPTION: PERSISTENT STIGMA SURROUNDING SUBSTANCE USE DISORDERS (SUD), MENTAL HEALTH ISSUES, AND CO-OCCURRING DISORDERS (COD) IMPACTING COMMUNITY ENGAGEMENT AND SUPPORT.
3. STAFFING STABILITY: CHALLENGES IN MAINTAINING STABLE STAFFING LEVELS AND CONSISTENCY, LEADING TO TURNOVER (PLE TURNOVER) AND AFFECTING PROGRAM CONTINUITY.
4. DATA MANAGEMENT: ISSUES WITH DATA COLLECTION, ANALYSIS, AND UTILIZATION FOR INFORMED DECISION-MAKING, COMPOUNDED BY GAPS IN COMMUNITY SERVICES.
5. ACCESSIBILITY BARRIERS: GEOGRAPHIC OR FINANCIAL BARRIERS LIMITING PARTICIPATION AND ENGAGEMENT OF COMMUNITY MEMBERS, INCLUDING LIMITED OPTIONS FOR SOBER LIVING AND TREATMENT-SUPPORTED RECOVERY HOMES.
6. GRANT DEPENDENCY: VULNERABILITY TO GRANTS BEING DISCONTINUED, AFFECTING PROGRAM SUSTAINABILITY AND GROWTH.
7. COMMUNITY EDUCATION: INSUFFICIENT COMMUNITY EDUCATION ON SUBSTANCE USE AND MENTAL HEALTH ISSUES, AS WELL AS RECOVERY PATHWAYS.
8. FAMILY SUPPORT: LACK OF STRUCTURED SUPPORT SYSTEMS FOR FAMILIES OF INDIVIDUALS FACING SUD, MENTAL HEALTH CHALLENGES, OR COD.
9. CULTURAL SENSITIVITY: LIMITED AVAILABILITY OF CULTURALLY SENSITIVE SUPPORT GROUPS AND SERVICES TAILORED TO DIVERSE COMMUNITY NEEDS.
10. HEALTHCARE ACCESS: FEW PROVIDERS OFFERING IN-PATIENT CARE FOR INDIVIDUALS WITH DUAL DIAGNOSES, IMPACTING COMPREHENSIVE TREATMENT AVAILABILITY.
11. EMPLOYMENT AND ECONOMIC STABILITY: CHALLENGES RELATED TO UNEMPLOYMENT, POVERTY, AND LACK OF CHILDCARE, HINDERING RECOVERY AND COMMUNITY WELL-BEING.
12. HOMELESSNESS: SEASONAL CHALLENGES (COLD WINTERS AND HOT SUMMERS) EXACERBATING HOMELESSNESS AND HOUSING INSTABILITY AMONG VULNERABLE POPULATIONS.



SWAT



SWAT | OPPORTUNITIES


1. EXPANSION OPPORTUNITIES: POTENTIAL TO BROADEN COMMUNITY OUTREACH AND IMPACT THROUGH EXPANDED INITIATIVES, INCLUDING COMMUNITY INVOLVEMENT AND NETWORKING WITH STAKEHOLDERS.
2. GRANT OPPORTUNITIES: PURSUIT OF ADDITIONAL FUNDING SOURCES TO SUPPORT INNOVATIVE PROGRAMS AND SUSTAINABILITY, LEVERAGING FUTURE GRANTS/FUNDING OPPORTUNITIES PROVIDED BY ROSC.
3. POLICY ADVOCACY: INFLUENCE POLICY DEVELOPMENT TO ENHANCE SUPPORT FOR COMMUNITY HEALTH AND RECOVERY INITIATIVES, INCLUDING REIMAGINING CULTURALLY SENSITIVE RECOVERY APPROACHES.
4. COMMUNITY EMPOWERMENT: ENGAGE RESIDENTS AS ADVOCATES AND LEADERS IN PROMOTING HEALTH AND RESILIENCE, ENHANCING COMMUNITY EDUCATION AND AWARENESS.
5. TECHNOLOGY INTEGRATION: UTILIZE TECHNOLOGY, INCLUDING SOCIAL MEDIA, FOR IMPROVED COMMUNICATION, OUTREACH, AND STORYTELLING OF RECOVERY JOURNEYS.
6. FAITH-BASED PARTNERSHIPS: COLLABORATE WITH FAITH-BASED ORGANIZATIONS TO PROVIDE HOLISTIC SUPPORT AND HOPE TOWARDS OUR COMMUNITY'S FUTURE.
7. SERVICE ENHANCEMENT: EXPAND THE MENU OF SERVICES BY LINKING COMMUNITY STAKEHOLDERS AND INCREASING THE NUMBER OF INDIVIDUALS PURSUING RECOVERY PATHWAYS.



SWAT



SWAT | THREATS

1. ECONOMIC VOLATILITY: FLUCTUATIONS IMPACTING FUNDING AVAILABILITY AND RESOURCE ALLOCATION, EXACERBATED BY LACK OF FUNDING.
2. PUBLIC PERCEPTION: PERSISTENT STIGMAS SURROUNDING SUBSTANCE USE DISORDERS (SUD), MENTAL HEALTH ISSUES, AND RECOVERY, HINDERING COMMUNITY SUPPORT AND ENGAGEMENT.
3. REGULATORY CHANGES: LEGISLATIVE CHANGES IN THE STATE OF ILLINOIS AFFECTING HEALTHCARE POLICIES AND PROGRAM OPERATIONS WITHIN THE ROSC.
4. COMMUNITY DYNAMICS: LIMITED UNDERSTANDING OF CITY DYNAMICS INFLUENCING RECOVERY EFFORTS, COMPOUNDED BY HARSH ATTITUDES AND LACK OF OPEN-MINDEDNESS.
5. PUBLIC HEALTH CHALLENGES: ESCALATING OPIOID EPIDEMIC AND POTENTIAL IMPLICATIONS OF MARIJUANA LEGALIZATION ON COMMUNITY HEALTH AND RECOVERY SERVICES.
6. MISCONCEPTIONS: MISUNDERSTANDING THE PURPOSE AND FUNCTION OF A RECOVERY ORIENTED SYSTEMS OF CARE (ROSC), LEADING TO UNREALISTIC EXPECTATIONS FROM STAKEHOLDERS.
7. HOUSING BARRIERS: CHALLENGES FOR INDIVIDUALS WITH  CRIMINAL HISTORIES TO SECURE SUBSIDIZED OR SOBER HOUSING, IMPACTING RECOVERY AND STABILITY.

GOALS

THIS NEXT PART MAY GET A BIT LONG ✓

A - D

1. GOAL A: ENHANCE COMMUNITY AWARENESS AND ENGAGEMENT
2. GOAL B: EXPAND PARTNERSHIP AND RESOURCE COORDINATION
3. GOAL C: STRENGTHEN RECOVERY SUPPORT SERVICES
4. GOAL D: ENSURE RECOVERY COMMUNITY SAFETY AND WELL-BEING

GOAL A: ENHANCE COMMUNITY AWARENESS AND ENGAGEMENT

OBJECTIVE A.1:
INCREASE
AWARENESS OF
COMMUNITY EVENTS
AND INITIATIVES

ooo STRATEGY +

- STRATEGY: UTILIZE SOCIAL MEDIA PLATFORMS, COMMUNITY NEWSLETTERS, AND LOCAL MEDIA TO PROMOTE EVENTS AND INITIATIVES.



- ACTION STEPS:

- REGULARLY UPDATE SOCIAL MEDIA CHANNELS WITH UPCOMING EVENTS AND SUCCESS STORIES.
- CARRY AND CIRCULATE MONTHLY COMMUNITY NEWSLETTER HIGHLIGHTING KEY ACTIVITIES AND ACHIEVEMENTS.
- ESTABLISH PARTNERSHIPS WITH LOCAL MEDIA OUTLETS FOR COVERAGE OF MAJOR EVENTS.

OBJECTIVE A.2:
FOSTER COMMUNITY
ENGAGEMENT

ooo STRATEGY +

- STRATEGY: ENCOURAGE ACTIVE PARTICIPATION AND INVOLVEMENT IN COMMUNITY ACTIVITIES.

- ACTION STEPS:

- ORGANIZE ROSC-LED COMMUNITY FORUMS, MEETINGS AND FOCUS GROUPS TO GATHER INPUT AND FEEDBACK.
- IMPLEMENT A PLE COMMUNITY AMBASSADOR PROGRAM TO FACILITATE COMMUNICATION BETWEEN RESIDENTS AND ROSC.
- CONDUCT FOCUS GROUPS WITH DIVERSE COMMUNITY MEMBERS TO ASSESS ENGAGEMENT STRATEGIES.

GOAL A: ENHANCE COMMUNITY AWARENESS AND ENGAGEMENT

OBJECTIVE A.3:
BUILD TRUST AND
TRANSPARENCY



○○○ STRATEGY +

- STRATEGY: PROMOTE
TRANSPARENCY IN COMMUNICATION
AND DECISION-MAKING PROCESSES.

- ACTION STEPS:

- DEVELOP A COMMUNICATION PROTOCOL FOR
SHARING UPDATES AND DECISIONS WITH
STAKEHOLDERS.
- ESTABLISH A FEEDBACK MECHANISM TO
ADDRESS COMMUNITY CONCERNS AND SUGGESTIONS
PROMPTLY.

GOAL B: EXPAND PARTNERSHIP AND RESOURCE COORDINATION

OBJECTIVE B.1: FORGE STRATEGIC PARTNERSHIPS



○○○ STRATEGY +

- STRATEGY: COLLABORATE WITH LOCAL BUSINESSES, FAITH-BASED ORGANIZATIONS, GOVERNMENTAL AGENCIES, AND OTHER STAKEHOLDERS IN THE 12 SECTORS.

- ACTION STEPS:

- IDENTIFY POTENTIAL PARTNERS THROUGH NETWORKING EVENTS AND COMMUNITY OUTREACH.
- IF NEEDED, CREATE MEMORANDUMS OF UNDERSTANDING (MOUS) WITH KEY STAKEHOLDERS OUTLINING COLLABORATION GOALS.
- JOIN DIVERSE COALITIONS OF STAKEHOLDERS TO ADDRESS COMMUNITY-WIDE ISSUES COLLABORATIVELY.

OBJECTIVE B.2: ENHANCE RESOURCE ACCESSIBILITY

○○○ STRATEGY +

CENTRALIZE RESOURCE INFORMATION AND IMPROVE ACCESS FOR COMMUNITY MEMBERS.

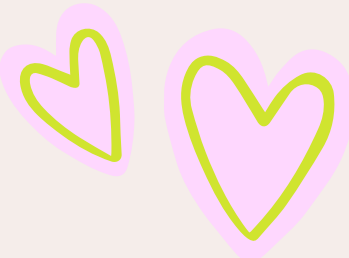
- ACTION STEPS:

- I- KEEP ONLINE RESOURCE DIRECTORY LISTING OF AVAILABLE SERVICES AND CONTACT INFORMATION UP-TO-DATE .
- BE A PHYSICAL RESOURCE INFORMATION CENTER FOR COMMUNITY.
- TRAIN STAFF AND VOLUNTEERS TO ASSIST COMMUNITY MEMBERS IN NAVIGATING AVAILABLE RESOURCES. IDENTIFY POTENTIAL PARTNERS THROUGH NETWORKING EVENTS AND COMMUNITY OUTREACH.
- IF NEEDED, CREATE MEMORANDUMS OF UNDERSTANDING (MOUS) WITH KEY STAKEHOLDERS OUTLINING COLLABORATION GOALS.
- JOIN DIVERSE COALITIONS OF STAKEHOLDERS TO ADDRESS COMMUNITY-WIDE ISSUES COLLABORATIVELY.

GOAL C: STRENGTHEN RECOVERY SUPPORT SERVICES

OBJECTIVE C.1:
EXPAND SUBSTANCE
USE AND MENTAL
HEALTH SERVICES

ooo STRATEGY +
- STRATEGY: HELP INFORM
ADVOCATES FOR INCREASED
FUNDING AND SUPPORT FOR
TREATMENT AND RECOVERY
SERVICES.



- ACTION STEPS:
- SUPPORT COMMUNITY PARTNERS LOBBYING
STATE AND FEDERAL POLICYMAKERS FOR
ADDITIONAL FUNDING FOR REHABILITATION
CENTERS AND MENTAL HEALTH FACILITIES.
- PARTNER WITH HEALTHCARE PROVIDERS TO
OFFER INTEGRATED CARE MODELS FOR DUAL
DIAGNOSIS PATIENTS.
- CONDUCT PUBLIC AWARENESS CAMPAIGNS TO
REDUCE STIGMA AND INCREASE HELP-SEEKING
BEHAVIORS.

OBJECTIVE C.2:
PROMOTE COMMUNITY
EDUCATION AND
EMPOWERMENT

ooo STRATEGY +
PROVIDE EDUCATIONAL OPPORTUNITIES AND
EMPOWER COMMUNITY MEMBERS TO SUPPORT
RECOVERY.

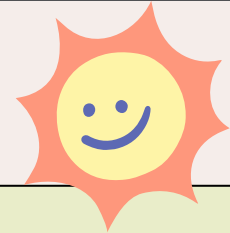
- ACTION STEPS:
- OFFER WORKSHOPS ON SUBSTANCE USE
DISORDERS, MENTAL HEALTH, NARCAN, TEST
STRIPS AND MULTIPLE RECOVERY PATHWAYS.
- ENGAGE SCHOOLS AND YOUTH ORGANIZATIONS
IN PREVENTION AND EDUCATION PROGRAMS.
- TRAIN COMMUNITY LEADERS AND VOLUNTEERS
ON HOW TO HELP INDIVIDUALS IN RECOVERY
- TRAIN MORE PLE'S AS PEER SUPPORT
SPECIALISTS FOR INDIVIDUALS IN RECOVERY.

GOAL D: ENSURE RECOVERY COMMUNITY SAFETY AND WELL- BEING

1. OBJECTIVE D.1: STRENGTHEN COMMUNITY POLICING AND SAFETY INITIATIVES

○○○ STRATEGY +

STRATEGY: COLLABORATE WITH LAW ENFORCEMENT TO IMPROVE COMMUNITY SAFETY AND TRUST, WHILE DESTIGMATIZING RECOVERY.



- ACTION STEPS:

- IMPLEMENT COMMUNITY POLICING PROGRAMS FOCUSED ON BUILDING POSITIVE RELATIONSHIPS AND FOSTERING TRUST BETWEEN LAW ENFORCEMENT AND COMMUNITY MEMBERS IN RECOVERY.
- HOST JOINT WORKSHOPS AND TRAINING SESSIONS THAT INCLUDE LAW ENFORCEMENT OFFICERS AND COMMUNITY MEMBERS TO EDUCATE ABOUT SUBSTANCE USE DISORDERS (SUD) AND MENTAL HEALTH CHALLENGES.
- ADVOCATE FOR POLICIES WITHIN LAW ENFORCEMENT AGENCIES THAT SUPPORT OFFICERS SEEKING HELP FOR SUD OR MENTAL HEALTH ISSUES, EMPHASIZING CONFIDENTIALITY AND SUPPORT.
- INTRODUCE PEER SUPPORT PROGRAMS WITHIN LAW ENFORCEMENT AGENCIES TO PROVIDE CONFIDENTIAL SUPPORT AND RESOURCES FOR OFFICERS FACING SUBSTANCE USE OR MENTAL HEALTH CHALLENGES.
- DEVELOP AND DISTRIBUTE EDUCATIONAL MATERIALS AND RESOURCES THAT PROMOTE UNDERSTANDING AND EMPATHY AMONG LAW ENFORCEMENT OFFICERS TOWARDS INDIVIDUALS IN RECOVERY.
- FOSTER PARTNERSHIPS WITH LOCAL TREATMENT PROVIDERS AND RECOVERY ORGANIZATIONS TO ENSURE OFFICERS HAVE ACCESS TO APPROPRIATE RESOURCES FOR THEMSELVES AND COMMUNITY MEMBERS IN NEED.

GOAL D: ENSURE RECOVERY COMMUNITY SAFETY AND WELL-BEING

1. OBJECTIVE D.2:
SUPPORT YOUTH
DEVELOPMENT AND
EDUCATION



○○○ STRATEGY +

STRATEGY: ENHANCE EDUCATIONAL OPPORTUNITIES AND POSITIVE YOUTH ENGAGEMENT PROGRAMS, INTEGRATING AWARENESS ABOUT RECOVERY.

- ACTION STEPS:

- EXPAND AFTER-SCHOOL PROGRAMS AND MENTORSHIP OPPORTUNITIES THAT INCLUDE DISCUSSIONS ON SUBSTANCE USE PREVENTION AND THE IMPORTANCE OF MENTAL HEALTH.
- PARTNER WITH SCHOOLS TO INTEGRATE CURRICULUM COMPONENTS THAT PROMOTE UNDERSTANDING AND EMPATHY TOWARDS INDIVIDUALS IN RECOVERY.
- ADVOCATE FOR YOUTH-LED INITIATIVES THAT PROMOTE INCLUSIVITY AND SUPPORT FOR PEERS FACING SUD OR MENTAL HEALTH CHALLENGES.

GOAL D: ENSURE RECOVERY COMMUNITY SAFETY AND WELL-BEING

FURTHER POSSIBLE
ACTIONS OF GOAL D:

- ACTION STEPS:

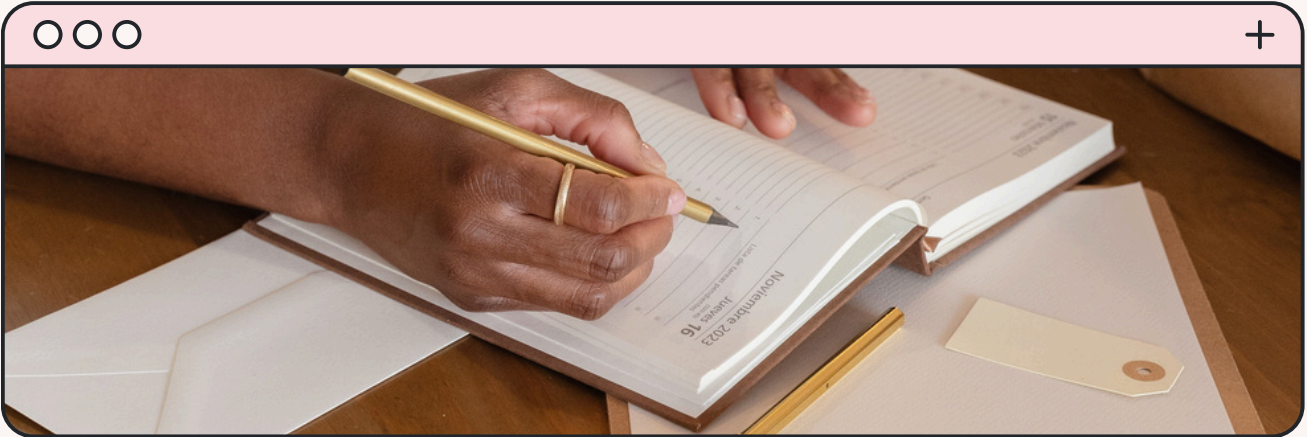
Destigmatization Efforts: Incorporate messaging and campaigns across all community safety initiatives that highlight stories of recovery and emphasize that seeking help is a sign of strength, both for officers and community members.

Training and Awareness: Provide ongoing training for law enforcement on trauma-informed approaches and recognizing signs of substance use or mental health issues during interactions with community members.

Community Engagement: Host community forums and panels that feature discussions between law enforcement leaders, recovery experts, and community members to bridge understanding and foster collaboration.

Support Networks: Establish and promote support networks within law enforcement agencies that focus on destigmatizing recovery and providing confidential support for officers navigating substance use or mental health challenges.

Evaluation & Implementation



TOOLS FOR

EVALUATION | IMPLEMENTATION

Monitoring and
Evaluation:

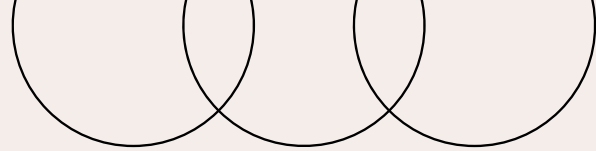
Feedback Mechanisms:
Solicit feedback from
stakeholders and
community members
through surveys,
focus groups, and
community forums.

- Adaptation and
Flexibility: Adjust
strategies based on
evaluation findings
and emerging
community needs.



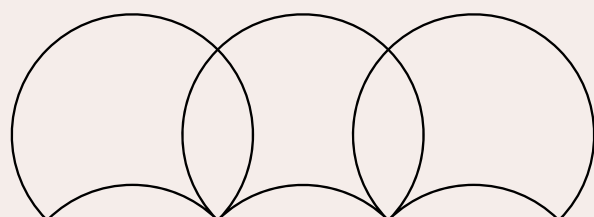
Conclusion

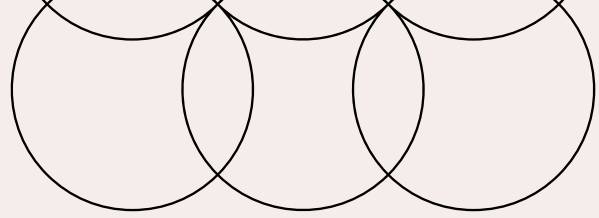
Summary



Three Cords Strong ROSC (Recovery-Oriented Systems of Care) is dedicated to enhancing community health and well-being in Oakland, Kenwood, Hyde Park, and Woodlawn neighborhoods of Chicago through a comprehensive strategic plan. Anchored in robust community engagement and data-driven insights, our plan focuses on leveraging strengths such as strong community partnerships, innovative programming, and cultural sensitivity to address pressing challenges. We aim to mitigate resource constraints, stigma surrounding substance use disorders, and staffing stability issues by advocating for equitable access to recovery services and bolstering community education initiatives. Through strategic communication and technology integration, we seek to increase community awareness and engagement while fostering a supportive environment that promotes recovery and resilience.

Our strategic goals encompass enhancing community safety through collaborative policing initiatives and supporting development and education. We prioritize de-stigmatization efforts among law enforcement and community members, integrating substance use disorder awareness into safety programs and educational curricula. By advocating for policy reforms and expanding access to recovery resources, Three Cords Strong ROSC aims to create a sustainable and inclusive community where all residents have the opportunity to thrive and contribute to a healthier future.





THREE CORDS STRONG

NOT EASILY BROKEN

ECCLESIASTES 4:9-12

Thank You,

♥ **Vawnshekia Oklah**

☎ 773-636-4689

💻 voklak@transitionaltrainingservices.org

