

RANDOLPH COUNTY, ILLINOIS

RESOURCE GUIDE 2024-2025

FOURTH EDITION



SCAN FOR
DIGITAL GUIDE



Bringing people and services together.

**Insert Blank Page Here
No Header and Footer On This Page
INSIDE FRONT COVER**

RANDOLPH COUNTY, IL RESOURCE GUIDE

* Located outside of Randolph County but available to Randolph County residents

** Online & National Hotline numbers

Table of Contents

ANCHOR AGENCIES Offering a Variety of Services.....	14
ComWell.....	14
DHS (Department Of Human Services) Family Community Resource Center	15
Randolph County Health Department.....	15
Western Egyptian Economic Opportunity Council, Inc.	15
*Centerstone	16
*National Alliance on Mental Illness of Southwestern Illinois (NAMI SWI)	16
**211 United Way Help Line	17
ALCOHOL MISUSE & RECOVERY	17
Alcoholics Anonymous – Find AA Meetings	17
*Alcoholic Rehabilitation Community Home (ARCH).....	17
ALZHEIMERS	17
*Alzheimer’s Association.....	17
**Alzheimer Support.....	17
**Alzheimer’s.gov	17
**Alzheimer’s Hotline	18
**National Institute on Aging - Alzheimer’s	18
ANIMALS	18
Animal Control – Randolph County	18
City of Chester Animal Control.....	18
*Professional Wildlife Removal	18
**Animal Abuse Hotline.....	18
AUTISM.....	18
*ABA of Illinois - Applied Behavior Analysis	18
*Acorn Health - ABA Autism Therapy in Illinois	18
*Autism Society of Southern Illinois	18
*BlueSprig	18
*Center for Autism and Related Disorders.....	19
*Center for Autism Spectrum Disorders.....	19
*Centerstone CASTLE Services	19
*Emergent Learning Centers	19
*Illinois Center for Autism.....	19
*The Autism Clinic at Hope (TAC)	19
*The Autism Program of Illinois (TAP)	20
BRAIN INJURY (TRAUMATIC).....	20
SERVICES & TREATMENT	20
*Brain Injury Association of America	20
*Brain Injury Association of Illinois	20
*Brain Injury Foundation of St. Louis	20
*Missouri Brain & Spine	20
*NeuroRestorative.....	20
*The Rehabilitation Institute	20
*Washington University and Barnes-Jewish Neurology & Neurosurgery Center	21
SUPPORT GROUPS	21
*Brain Injury and Stroke Support Group.....	21
*MENTOR – Center for Comprehensive Services – TBI Support Group.....	21
CANCER	21

* Located outside of Randolph County but available to Randolph County residents

** Online & National Hotline numbers

Chemotherapy and Infusion Center (Memorial Hospital of Chester)	21
Lung Screening Program (Memorial Hospital of Chester)	21
*American Cancer Society	21
*Austin Wade Foundation	21
*Illinois Breast and Cervical Cancer Program	21
*SIH Breast Center (Southern Illinois Healthcare)	21
*SIH Cancer Institute (Southern Illinois Healthcare)	22
*Siteman Cancer Center at Memorial Hospital (Shiloh)	22
**Cancer Information Services	22
CELL PHONE	22
**LifeWireless	22
**SafeLink	22
CENTER FOR DISEASE CONTROL AND PREVENTION	22
**U.S. Centers for Disease Control and Prevention (CDC)	22
CHILD ABUSE	22
Illinois Department of Children & Family Services (Sparta)	22
**Childhelp National Child Abuse Hotline	22
*Illinois Department of Children and Family Services Child Abuse Reporting Hotline	23
CHILD ADVOCACY	23
*Birth to Five Illinois	23
*St. Clair County Child Advocacy Center	23
CHILDREN & FAMILY	23
ADOPTION & FOSTER CARE	23
Caritas Family Solutions	23
Life Network of Southern Illinois	23
*Equipping the Called	23
*Foster Family Resource Center of Southern Illinois	24
*Hoyleton Youth & Family Services	24
*Lutheran Child and Family Services of Illinois	24
*Lutheran Social Services of Illinois	24
CAMPS	24
*Camp Wartburg (a ministry of LCFS of IL)	24
EARLY CHILDHOOD EDUCATION & CARE	25
Brightpoint (previously Children’s Home & Aid)	25
Western Egyptian Economic Opportunity Council, Inc. (Head Start)	25
MISCELLANEOUS YOUTH & FAMILY SERVICES	25
ComWell	25
DHS Family Community Resource Center	25
Randolph County Birth to Three program in partnership with Chester School District	25
Randolph County Health Department	25
Regional Office of Education (ROE)	25
University of Illinois Extension – Randolph County	25
*Boys and Girls Club of Carbondale	26
*Centerstone	26
*Lutheran Social Services of Illinois	26
*Planned Parenthood	26
*The Night’s Shield	26
**CDC Infant and Toddler Nutrition	27
**Department Of Children and Family Services (DCFS)	27
**Illinois CARES Line: 24/7	27
**Illinois Coalition for Community Service	27
CRISIS	27
ComWell	27
**988: National Suicide Prevention Lifeline	27
**Illinois CARES Line: 24/7	27
**Illinois Warm Line	27
**Crisis Text Line	27

* Located outside of Randolph County but available to Randolph County residents
 ** Online & National Hotline numbers

DENTAL CARE	28
LOCAL	28
Barrett Family Dental.....	28
Chester Family Dental.....	28
Stephanie E. Graham, DMD.....	28
Tina Stulce, DDS	28
Trost Dental.....	28
REDUCED FEES	28
*Paul B. Hanks Dental Clinic (at Lewis & Clark Community College)	28
*Olson Orthodontics	28
*Shawnee Health Care Dental.....	28
*SIHF Healthcare – Dental Care.....	28
*SIU Community Dental Center	29
*SIU Dental School	29
DIABETES	29
Memorial Hospital of Chester.....	29
Sparta Community Hospital	29
*VA Medical Center, Marion.....	29
**American Diabetes Association	29
**Children with Diabetes	29
**Diabetes, Digestive & Kidney Diseases.....	29
**Illinois Department of Public Health: Diabetes Prevention and Control.....	29
**Medline Plus: Diabetes (National Library of Medicine).....	30
DISABILITY RESOURCES.....	30
HOUSING	30
ComWell.....	30
DHS Family Community Resource Center	30
LINC Inc.	30
*Archway	30
*Centerstone	30
*Division of Specialized Care for Children (DSCC)	30
*Illinois Guardianship Advocacy Commission.....	30
*Illinois Mentor	31
*Southern Illinois Center for Independent Living (SICIL).....	31
DOMESTIC VIOLENCE	31
*Sexual Assault Family Emergencies (SAFE)	31
*Survivor Empowerment Center	31
*Violence Prevention Center Southwestern Illinois.....	31
**Illinois Domestic Violence Hotline	31
**The National Domestic Violence Hotline.....	31
EATING DISORDERS	31
*Alsana St. Louis.....	31
*Branz Nutrition Counseling.....	31
*Clementine St. Louis	32
*Embodied Self Counseling, Erin Grumley, LPC	32
*Kylie Dennis PhD LCSW	32
*McCallum Place.....	32
*McDaniel Nutrition Therapy	32
*Saint Louis Behavioral Medicine Institute.....	32
*St. Louis Eating Recovery Therapy.....	32
**Equip Health – Virtual Eating Disorder Care.....	32
EDUCATION.....	33
ALTERNATIVE, CAREER AND TECHNICAL EDUCATION.....	33
Career Center of Southern Illinois.....	33
Monroe Randolph Red Brick School *Regional Safe School*.....	33
Perandoe Educational Program – SWICC Campus	33
Perandoe Special Education District Office.....	33

* Located outside of Randolph County but available to Randolph County residents

** Online & National Hotline numbers

GED/OTHER.....	33
Regional Office of Education (ROE) Monroe-Randolph Counties	33
*Southwestern Illinois College – Youth Services.....	33
PRIVATE SCHOOLS	33
Christ Our Savior Lutheran High School	33
St. John Lutheran School.....	33
St. John the Baptist Catholic School	33
St. John’s Lutheran School	33
St. Mark’s Lutheran School	33
St. Mary’s Catholic School	33
Trinity Lutheran School.....	33
PUBLIC SCHOOLS	34
Chester Elementary School.....	34
Chester High School	34
Coulterville Elementary, Jr & High School.....	34
Evansville Attendance Center.....	34
Prairie Du Rocher Elementary School	34
Red Bud Elementary School	34
Red Bud High School	34
Sparta High School	34
Sparta Lincoln School.....	34
Steeleville Elementary School	34
Steeleville High School.....	34
SECONDARY EDUCATION	34
*John A. Logan College (JALC)	34
*Rend Lake College (RLC).....	34
*Southern Illinois University (SIU)	34
*Southern Illinois University Edwardsville (SIUE).....	35
*Southwestern Illinois College (SWIC).....	35
ELECTRONICS	35
Gadget Ambulance LLC.....	35
*PCs for People	35
EMPLOYMENT	35
EMPLOYMENT AGENCIES	35
*Express Employment Professionals.....	35
*Hire Level	35
*Labor Finders	35
*Proman Staffing.....	35
*StaffQuick	35
JOB POSTINGS	36
County Journal Job Hub	36
**Work for Illinois	36
MISCELLANEOUS	36
Southwestern Illinois WorkNet Center	36
*MERS Goodwill St. Clair County Career and Workforce Development Center.....	36
ENERGY ASSISTANCE	36
Western Egyptian Economic Opportunity Council, Inc.	36
EPILEPSY	36
*Epilepsy Foundation of Greater Southern Illinois	36
FIRE DEPARTMENTS.....	36
Baldwin Community Fire Protection District.....	36
Chester Fire Department	36
Coulterville Volunteer Fire Department – Fire Protection District.....	36
Ellis Grove Fire Department.....	36
Evansville Fire Department.....	37
Percy Volunteer Fire Department	37
Prairie Du Rocher Fire Department	37

* Located outside of Randolph County but available to Randolph County residents

** Online & National Hotline numbers

Red Bud Fire Department	37
Sparta Fire Department	37
Steeleville Volunteer Fire Department	37
Tilden Volunteer Fire Department	37
FOOD	37
FARMERS MARKETS	37
Chester Farmer’s Market	37
Coulterville Markets in the Park	37
G & C Meyer Farm (Steeleville)	37
Prairie du Rocher Farmer’s Market	37
Percy Farmer’s Market	37
Sparta Farmer’s Market	37
FOOD PANTRIES & RESOURCES	38
Chester Area Christian Pantry	38
Food on the Move – Steeleville Senior Center	38
Musketeer Market	38
RBES Royal Table	38
Red Bud Food Pantry	38
Sparta Food Pantry	38
St. John Lutheran Church – Chester, IL	38
St. John Lutheran Church – Sparta, IL	38
St. Peter UCC Church	38
Steeleville Community Food Pantry	38
Tilden Food Pantry	38
Western Egyptian Economic Opportunity Council, Inc.	39
**Hunger Hotline	39
SUPPLEMENTAL NUTRITION ASSISTANCE PROGRAM (SNAP)	39
DHS Family Community Resource Center	39
WOMEN, INFANTS AND CHILDREN (WIC)	39
Randolph County Health Department	39
GAMBLING	39
**National Council on Problem Gambling (NCPG)	39
GOVERNMENT	39
Randolph County Courthouse	39
*Supplemental Security Income (SSI) *	40
GRIEF SERVICES	40
Griefshare	40
*Heartlinks Grief Center	40
*Hospice of Southern Illinois, Inc.	40
HEARING	40
DEAF	40
*School for Hearing Impaired	40
*SIU Carbondale Clinical Center	40
**Alexander Graham Bell	40
**Hearing Aid Project	41
MISCELLANEOUS	41
**CaptionCall	41
**Illinois Telecommunications Access Corporation (ITAC)	41
HEART	41
**American Heart Association	41
HOME HEALTH SERVICES	41
At Home Health Care – Sparta Community Hospital	41
Red Bud Regional Home Care	41
*Amedisys Home Health	41
*Southwestern Illinois Visiting Nurse Association – Services for Seniors	41
**Home Health Hotline	42
HOMELESS SERVICES	42

* Located outside of Randolph County but available to Randolph County residents

** Online & National Hotline numbers

Regional Office of Education (ROE)	42
Western Egyptian Economic Opportunity Council, Inc.	42
*The Center for Empowerment and Justice	42
HOMELESS SHELTERS, DOMESTIC SHELTERS & TRANSITIONAL HOUSING	42
*Charity Home Ministries	42
*Family Life Shelter	42
*Good Samaritan House	42
*Good Samaritan Ministries	42
*Lifeboat Alliance	43
*Lighthouse Shelter.....	43
*Society of St. Vincent de Paul Ministries.....	43
*Sexual Assault Family Emergencies (SAFE)	43
*Survivor Empowerment Center	43
*The Night’s Shield	43
*Violence Prevention Center	43
HOSPICE	44
Maple Creek Hospice.....	44
*Family Hospice of Belleville Area	44
*Hospice of Southern Illinois, Inc.	44
*Vitas Hospice Care	44
HOSPITALS	44
Memorial Hospital of Chester.....	44
Red Bud Regional Hospital.....	44
Sparta Community Hospital	44
HOUSING	44
COUNSELING, HOUSING PROGRAMS & RENT ASSISTANCE	44
Habitat for Humanity.....	44
Western Egyptian Economic Opportunity Council, Inc.	45
MENTAL ILLNESS.....	45
ComWell - Melmar (Sparta).....	45
PUBLIC HOUSING	45
Randolph County Housing Authority	45
SENIORS/DISABLED	45
MACO Management Co., Inc.....	45
SPECIAL NEEDS FOR INTELLECTUAL DISABILITY.....	45
ComWell – Community Integrated Living Arrangement (CILA) (Chester)	45
Progressive Careers and Housing (CILA) Sparta Terrace	45
HUMAN TRAFFICKING	45
*Healing Action Network, Inc.	45
*Restoration61	45
**National Human Trafficking Hotline	45
INTERNET ASSISTANCE	46
**Lifeline HUD Resource.....	46
**USAC Affordable Connectivity Program	46
LEGAL SERVICES	46
*Equip for Equality, Inc.....	46
*Land of Lincoln, Legal Aid	46
*SIU Carbondale Legal Clinic	46
*Veterans Legal Assistance Program (VLAP) (SIU)	46
LGBTQIA+ RESOURCES	46
*Metro East PRIDE	46
*PFLAG	47
*Queer-Oriented Rural Resource Network (QORRN)	47
*Rainbow Café LGBTQ Center	47
**The Trevor Project	47
LIBRARIES	47
Chester Public Library.....	47

* Located outside of Randolph County but available to Randolph County residents

** Online & National Hotline numbers

Coulterville Public Library	47
Evansville Public Library	47
Marissa Public Library.....	47
Prairie du Rocher Community Library.....	48
Red Bud Public Library	48
Sparta Public Library.....	48
Steeleville Area Public Library	48
Tilden Public Library	48
LONG-TERM CARE & ASSISTED LIVING	48
Addington Place of Sparta	48
Coulterville Rehabilitation and Health Care Center	48
Garden Place Senior Living	48
Randolph County Care Center.....	48
The Manor at Craig Farms.....	49
Three Springs Senior Living & Rehabilitation	49
MEDICAL	49
AFTERCARE & THERAPY PROGRAMS.....	49
Memorial Hospital Therapy & Sports Rehab Center.....	49
Red Bud Regional Hospital	49
The Center, After Care – Physical & Sports Therapy (Sparta Community Hospital)	49
BREAST HEALTH	49
Red Bud Regional Hospital	49
CARDIOLOGY	49
Cardiac Pulmonary Rehab Center (Memorial Hospital of Chester)	49
Red Bud Regional Hospital	50
Sparta Cardiology Office (Sparta Community Hospital)	50
CARE MANAGEMENT PROGRAM	50
Care Management Program (Sparta Community Hospital)	50
CLINICS, PHYSICIAN'S OFFICES & WELLNESS CARE	50
Chester Clinic (Memorial Hospital of Chester).....	50
Coulterville Medical Clinic (Sparta Community Hospital)	50
Family Health Centre (Sparta Community Hospital).....	50
North Campus Healthcare Clinic (Sparta Community Hospital)	50
Red Bud Health Clinic (Red Bud Regional Hospital)	50
SIHF Healthcare	51
Sparta Medical Office (Sparta Community Hospital)	51
Steeleville Clinic (Sparta Community Hospital).....	51
Steeleville Family Practice (Memorial Hospital of Chester)	51
*Shawnee Health Services - Migrant/Farmworker Health Center.....	51
CONVENIENT CARE	51
Convenient Care (Memorial Hospital of Chester).....	51
Convenient Care (Sparta Community Hospital)	51
Walk-In Clinic Red Bud Health Clinic (Red Bud Regional Hospital)	51
COUMADIN MANAGEMENT.....	52
Coumadin Clinic (Sparta Community Hospital).....	52
DIALYSIS SERVICES.....	52
DaVita Dialysis	52
Fresenius Kidney Care.....	52
MOBILE HEALTHCARE	52
Mobile Health Clinics (Sparta Community Hospital)	52
RESPIRATORY/PULMONARY	52
Cardiac Pulmonary Rehab Center (Memorial Hospital of Chester)	52
Cardiopulmonary Rehabilitation (Sparta Community Hospital)	52
Lung Screening Program (Memorial Hospital of Chester).....	52
Red Bud Regional Hospital	53
*Black Lung Program (A program of Shawnee Health Service).....	53
SKILLED CARE	53

* Located outside of Randolph County but available to Randolph County residents

** Online & National Hotline numbers

Swing Bed Program (Memorial Hospital of Chester)	53
Swing Bed Program (Sparta Community Hospital).....	53
SLEEP LAB.....	53
Memorial Hospital of Chester	53
Sparta Community Hospital.....	53
SPECIALTY CLINIC	53
Broadway Plaza Specialty Clinic (Sparta Community Hospital)	53
Memorial Hospital Specialty Clinic (Memorial Hospital)	54
North Campus Healthcare Specialty Clinic (Sparta Community Hospital)	54
Red Bud Regional Hospital	54
MEDICAL INSURANCE	54
**Affordable Care Act.....	54
**Healthcare for Kids.....	54
**Illinois Department of Insurance, Office of Consumer Health Insurance	54
**Medicaid	54
**Medicare.....	54
MENTAL HEALTH	54
ComWell.....	54
*Amygdala.....	55
*Behavioral Health Crisis Center	55
*Centerstone	55
*Chestnut Health Services	55
*Christian Hospital Recovery Center	55
*Comprehensive Behavioral Health Center	55
*Egyptian Behavioral Health	56
*Eldorado Rural Health	56
*Farm Family Resource Initiative.....	56
*Gateway Foundation	56
*Hoyleton Youth & Family Services	56
*Human Support Services.....	56
*Lincoln Prairie Behavioral Health Center	57
*NAMI Southwestern Illinois.....	57
*SIH Harrisburg Medical Center.....	57
*Touchette Regional Hospital Centerville	57
**Illinois WarmLine.....	57
**The Trevor Project	57
PHARMACIES & DRUG TAKE BACK PROGRAMS.....	57
PHARMACIES	57
Keil Pharmacy, Inc.	57
Memorial Community Pharmacy	57
Moody Health Mart Pharmacy	57
Red Bud Pharmacy	57
Tony's MediCenter Pharmacy	58
Victor's MediCenter Pharmacy	58
Wal-Mart (Sparta)	58
Wal-Mart (Chester).....	58
**Illinois Department on Aging	58
DRUG TAKE BACK PROGRAMS	58
Chester Police Department	58
Memorial Community Pharmacy	58
Moody Pharmacy	58
Red Bud Police Department	58
Sparta Police Department	58
Steeleville Police Department.....	58
PHYSICAL ACTIVITY	58
3 Nails Health & Fitness.....	58
Design Fitness	58

* Located outside of Randolph County but available to Randolph County residents

** Online & National Hotline numbers

Southside Strength & Conditioning, LLC	59
The Center	59
Uptown Fitness Center	59
Vasquez's Fitness Center	59
YMCA.....	59
POISON CONTROL	59
**Illinois Poison Control Center.....	59
POLICE DEPARTMENTS	59
Chester Police Department.....	59
Randolph County Sheriff's Department	59
Red Bud Police Department	59
Sparta Police Department.....	59
Steeleville Police Department.....	59
PREGNANCY	59
Caritas Family Solutions	59
Life Network of Southern Illinois	60
Prenatal Class (Memorial Hospital of Chester).....	60
Randolph County Birth to Three program.....	60
Randolph County Health Department.....	60
Sparta Pregnancy Care Center	60
*Charity Home Ministries	60
*Centerstone	60
*Hager House – Hoyleton FS.....	60
*Lutheran Child and Family Services of Illinois.....	60
*Lutheran Social Services of Illinois.....	61
*Planned Parenthood.....	61
PRISON & JAIL SERVICES	61
ComWell.....	61
*Illinois Department of Corrections	61
*Law and Grace Ministries	61
*Lutheran Social Services of Illinois.....	61
*Treatment Alternatives for Safe Communities (TASC)	61
RECREATION	62
BOWLING	62
American Legion Bowling.....	62
Blossom City Bowl	62
PARKS & MISCELLANEOUS	62
Cohen Complex.....	62
Cole Memorial Park.....	62
Fort de Chartres.....	62
Fort Kaskaskia State Park.....	62
Randolph County State Recreation Area	62
World Shooting & Recreational Complex.....	62
*Piney Creek Ravine Nature Reserve	62
POOLS & OTHER	62
Randolph County YMCA & Outdoor Pool.....	62
Ratz Memorial Park & City Pool.....	63
Sparta City Municipal Pool	63
*Perry Park Center (Missouri).....	63
*Ste. Genevieve County Community Center (Missouri)	63
RUNAWAY	63
**National Runaway Safeline	63
SENIOR SERVICES	63
NUTRITION SITES	63
Northeastern Randolph County Senior Center (Sparta).....	63
Steeleville Senior Center	63
Western Egyptian (Chester Senior Center)	63

* Located outside of Randolph County but available to Randolph County residents

** Online & National Hotline numbers

SENIOR PROGRAMS & SERVICES	63
AARP Driver Safety through Randolph County Farm Bureau.....	63
AmeriCorps Seniors – Retired and Senior Volunteer Program (RSVP)	63
Community Wellness Classes and Programs (Memorial Hospital of Chester).....	64
Community Wellness Classes and Programs (Sparta Community Hospital)	64
ComWell	64
Randolph County Health Department.....	64
Randolph County YMCA.....	64
Red Bud Regional Home Care	64
Red Bud Regional Hospital - Senior Solutions.....	64
Silver Sneakers – Programs for Seniors ages 65+.....	64
University of IL – Randolph County Extension Office	65
*AgeSmart Community Resources.....	65
*Agency on Aging of Southwestern Illinois	65
*CenterPointe Hospital	65
*Illinois Department of Children & Family Services – Grandparents raising Grandchildren	65
*Illinois Department on Aging	65
*Illinois Long-Term Care Ombudsman Program	65
*Illinois Telecommunication Access Corp (ITAC)	66
*Oasis.....	66
*Southwestern Illinois College – Programs and Services for Older Persons (PSOP)	66
*Violence Prevention Center of Southwestern Illinois	66
**AARP	66
**Elder Abuse Hotline.....	66
SEXUAL ASSAULT	66
*Survivor Empowerment Center	66
*Metro East Every Survivor County	67
**National Sexual Assault Hotline	67
SMOKING CESSATION	67
Cardiac Pulmonary Rehab Center (Memorial Hospital of Chester).....	67
Cardiopulmonary Rehabilitation (Sparta Community Hospital)	67
Courage to Quit (Respiratory Health Association) administered by ComWell.....	67
Lung Screening Program (Memorial Hospital of Chester).....	67
**1-800-QUIT NOW	67
**American Cancer Society – Quit for Life Program	67
**Illinois Quitline	68
**Smokefree.gov	68
SUBSTANCE MISUSE & RECOVERY	68
ComWell.....	68
*Little Egypt Area of Narcotics Anonymous	68
*CenterPointe Hospital.....	68
*Centerstone South.....	68
*Chestnut Health Systems	68
*Comprehensive Behavioral Health Center	68
*Gateway Foundation	69
*NAMI.....	69
*New Vision.....	69
*New Season Treatment Center	69
*The Aviary Recovery Center	69
**Illinois Helpline for Opioids and Other Substances.....	69
**Narcotics Anonymous	69
**Substance Abuse & Mental Health Services Administration (SAMHSA).....	69
SUICIDE PREVENTION	70
**988: National Suicide Prevention Lifeline	70
**LifeSavers Training Corp.	70
**Suicide Prevention Hotline	70
TRANSPORTATION	70

* Located outside of Randolph County but available to Randolph County residents

** Online & National Hotline numbers

Chester Senior Center	70
Monroe Randolph Transit District	70
First Transit	70
UNITED STATES POSTAL SERVICE	71
Baldwin Post Office	71
Chester Post Office	71
Ellis Grove Post Office	71
Evansville Post Office	71
Prairie du Rocher Post Office	71
Red Bud Post Office	71
Sparta Post Office	71
Steeleville Post Office	71
UTILITIES	72
Western Egyptian Economic Opportunity Council, Inc.	72
VETERANS.....	72
*Centerstone	72
*Department of Veterans Affairs Behavioral Medicine	72
*Illinois Department of Veteran’s Affairs	72
*NAMI Southwestern Illinois.....	72
*VA Medical Center, Marion.....	72
**Veteran’s Crisis Line	72
VISION	72
BLIND.....	72
*Department of Rehab Services/Bureau of Blind Services	72
*Southern Illinois Talking Book Center	72
MISCELLANEOUS	73
Marion Eye Center	73
Southern Illinois Eye Care.....	73
Walmart Vision Center.....	73
**American Academy of Ophthalmology	73
**National Eye Health Education Program	73
WEATHERIZATION	73
Western Egyptian Economic Opportunity Council, Inc.	73

* Located outside of Randolph County but available to Randolph County residents
 ** Online & National Hotline numbers

ANCHOR AGENCIES Offering a Variety of Services

ComWell

For nearly 50 years, ComWell has provided behavioral health and developmental disability services to people of all ages. (Private insurance, Medicaid, Medicare or self-pay)

24 Hour Crisis Line(888) 855-0034
Caresline (for youth up to age 21).....(800) 345-9049
National Suicide Crisis Lifeline **TEXT or CALL 988**
Veteran’s Crisis Line**DIAL 988, then press 1**
Contact Info & Hours: Monday-Thursday 8:00 a.m.-5:00 p.m., Friday 8:00 a.m.-4:00 p.m.
**Individual office hours may vary*

Locations:

Red Bud: 10257 State Route 3, Red Bud, IL 62278.....(618) 282-6233
Chester: 2517 State St., Chester, IL 62233.....(618) 826-4547
Sparta: 104 Northtown Dr., Sparta, IL 62286(618) 443-3045
Okawville: 109 West Elm St., Okawville, IL 62271.....(618) 243-2091

Website: <https://comwell.us/>

Services:

- **Same-Day Assessment:** readily available mental health and substance misuse services for adults and youth.
Hours: Monday & Tuesday @ Chester 9:00 a.m.-3:00 p.m.
 Wednesday @ Red Bud 9:00 a.m.-3:00 p.m.
 Thursday @ Sparta 9:00 a.m.-3:00 p.m.
 Friday @ Okawville 9:00 a.m.-3:00 p.m.
- **Call 4 Calm Services:** free anonymous program that reduces barriers to seeking mental health services. Text “TALK” to 552020 or “HABLAR” to 552020 to receive a return call within 24 hours
- **Children & Families Services:** Comprehensive Community Based Youth Services (CCBYS) provides response and support to families involving youth who are considered runaways, unable to return to their home, or are at risk of either aforementioned situation. This program operates 24/7/365 and can be accessed by contacting the 24/7 crisis hotline at: (888) 855-0034
- **CILA (Community Integrated Living Arrangement) (Chester)**.....**(618) 282-6233**
Services: 24-hour supervised residential facility for adults with intellectual & developmental disabilities.
- **Community Day Service Program (Red Bud):** for people with developmental disabilities and intellectual disabilities such as Autism, Cerebral Palsy and Down syndrome; services include community day services, sheltered employment and residential services.
Hours: 1st & 3rd Saturday, 2nd & 4th Friday of the month | Pick up is 10:30 a.m.
 Registration via phone Monday-Friday 9:00 a.m-4:00 p.m.
- **Counseling Services:** available for Mental Health and Substance Use Disorder. Help individuals, couples and families with life’s challenges, including substance misuse and recovery; includes emergency counseling 24/7 for individuals contemplating suicide to provide evaluations and medication management.
- **Melmar (101 Melmar Court) (Sparta)****(618) 282-6233**
Services: Melmar is a 24-hour supervised residential facility for adults age 18 and over with a diagnosis of severe and persistent chronic mental illness. The program is designed to increase independent living skills and to facilitate community integration or reintegration.
- **Mental Health Services:** provides a wide range of professional behavioral health and intellectual disabilities services
- **Partnership with Randolph County Housing Authority:** our collaboration with RCHA gives us the opportunity to bridge gaps and form connections with other resources in the region such as Nursing Homes, Assisted Living Facilities, Hospitals, and various other agencies. We have partnership both within and outside of Randolph County.
- **Healthy Communities Alliance:** organization of individuals from Randolph & Washington counties seeking to increase awareness and education to enhance physical and mental well-being through community partnerships
Contact Info:allianceinfo@comwell.us

* Located outside of Randolph County but available to Randolph County residents

** Online & National Hotline numbers

DHS (Department Of Human Services) Family Community Resource Center

Services: receives applications for assistance including the following:

- **Temporary Assistance for Needy (TANF):** provides temporary financial assistance for pregnant women and families with one or more dependent children. TANF provides financial assistance to help pay for food, shelter, utilities and expenses other than medical.
- **Aid to the Aged, Blind and Disabled (AABD):** provides cash assistance for individuals over 65 years old, blind or disabled
- **Earnfare:** designed to provide adults who receive SNAP & volunteer an opportunity to gain valuable work experience, earn cash assistance and become self-sufficient
- **Earned Income Tax Credit (EITC):** if you work & meet eligibility requirements, you could claim the EITC to reduce your federal income taxes and get a bigger refund.
- **Supplemental Nutrition Assistance Program (SNAP):** helps low-income people and families buy the food they need for good health. Benefits are provided on the Illinois Link Card.
- **Medical Assistance Program:** provides medical assistance to individuals who meet eligibility criteria.

Contact Info: 870 Lehmen Dr., Chester, IL 62233 Automated (618) 826-4559/TTY (866) 876-7176
 After Hours Crisis Number **(800) 828-7422**

Hours: Monday-Friday 8:30 a.m.-5:00 p.m.

Website: <https://www.dhs.state.il.us/page.aspx>

Randolph County Health Department

RGHD is a certified local health department that provides clinical and environmental health services through the operation of various programs, services and partnerships. RGHD offers multiple vaccine clinics for people of all ages.

Contact Info: 2515 State St., Chester, IL 62233(618) 826-5007
 211 North Hasle, Sparta, IL 62286(618) 443-2995

Hours: Monday-Friday, 8:00 a.m.-4:00 p.m.

Website: <https://am.randolphco.org/index.php/welcome>

Services:

- **Maternal and Child Health Services:** family case management, Adverse Pregnancy Outcome Reporting Program (APORS), Health Works of Illinois (HWIL), Women, Infants and Children (WIC), breastfeeding peer counseling, lead poisoning prevention program, genetics program, court ordered paternity testing
- **Environment Health Programs:** food establishment inspection and sanitation, foodborne illness investigation, private sewage and private water, non-community water and closed loop wells
- **Infectious Disease Program:** adult immunization program, Tuberculosis (TB) program, Sexually Transmitted Disease (STD), influenza, and communicable disease program
- **Community Health Education:** smoke free Illinois surveillance and enforcement, Southern Illinois substance abuse coalition, and prescription monitoring program

Western Egyptian Economic Opportunity Council, Inc.

Contact Info:

Central office, 1 Industrial Park, Steeleville, IL 62288(618) 965-3458

Head Start(618) 965-3458

Randolph County Outreach, 1820 North Market, Bldg. A, Sparta, IL 62286(618) 443-5231

Hours: Monday-Friday, 8:00 a.m.-4:30 p.m.

Website: <https://weeoc.org/>

Services:

- **Crisis Based Services:** include rent, utilities and other assistance for low-income individuals
- **Energy Assistance:** includes Low Income Home Energy Assistance Program (LIHEAP), Percentage of Income Payment Plan (PIPP) and Warm Neighbors Cool Friends
- **Food Pantry (Sparta)**

Location: 1820 North Market, Bldg. A., Sparta, IL 62286(618) 443-5231
Hours: Every Thursday from 1:00 p.m.-3:30 p.m.

* Located outside of Randolph County but available to Randolph County residents

** Online & National Hotline numbers

- **Housing Services:** HUD Certified Counseling (number to call 618-542-4656), rent and homeless prevention assistance (number to call 618-443-5231) and Pyramid Manor Apartments (number to call 618-965-3458).
- **Head Start:** child development program serving three and four-year old children from low-income families and actively recruits and enrolls children with disabilities
Locations:
 - Coulterville: 316 East Grant St., Coulterville, IL 62237(618) 758-2524
 - Percy: 607 West Pine St., Percy, IL 62272(618) 497-2410
 - Sparta: 1820 North Market, Bldg. B, Sparta, IL 62286(618) 443-3037
- **Senior Center (Chester):** provides social, recreational, educational and informational activities in addition to nutritious meals to people age 60+ (and their spouses regardless of age); assists with Medicare sign up and questions.
 Location: 805 State St., Chester, IL 62233.....(618) 826-1508
- **Weatherization (Randolph County Outreach):** enables low-income families to reduce their energy bills by making their homes more energy efficient

***Centerstone**

(Medicaid, Medicare & most private insurance)

Services: include addiction recovery, children & family, counseling, crisis and urgent care, forensic evaluation, housing, inpatient, military, pharmacy, primary care, psychiatric care, social services, and vocational and workplace assistance.

Contact Info:

Inpatient Services – Fellowship House

800 North Main Street, Anna, IL 62906(618) 833-4456

Outpatient Services

2311 South Illinois Avenue, Carbondale, IL 62903.....(855) 608-3560

402 East Plaza Drive Ste 4/5, Carterville, IL 62918 (855) 608-3560

403 Municipal Drive, Carterville, IL 62908 (618) 932-9330

202 S. Bentley, Marion, IL 62959 (855) 608-3560

1307 West Main Street, Marion, IL 62959(855) 608-3560

902 West Main Street, West Frankfort, IL 62896(855) 608-3560

2615 Edwards Street, Alton, IL 62002(877) 467-3123

Military Services.....(866) 726-4560

Website: <https://centerstone.org/locations/illinois/#nav-locations>

***National Alliance on Mental Illness of Southwestern Illinois (NAMI SWI)**

HELPLINE:(800) 273-8255

Contact Info: Gateway Regional Medical Center, 2100 Madison Ave., 4th Floor,

Granite City, IL 62040 (618) 798-9788

Website: <https://namiswi.org/>

To obtain support group times, obtain links and register for NAMI classes, go to the NAMI SWI website.

Services: provides free education and support programs for persons with mental illnesses and their families; provides a voice for people affected by mental illnesses by advocating for them with public and private policy makers for better legislation and more effective mental health treatment options

SUPPORT GROUPS:

Available weekly via Zoom. Go to the NAMI SWI website for dates and times.

- **Family Support Group** - for families and friends of persons diagnosed with severe and persistent mental illness
- **NAMI Connection Recovery** - support group open to all adults with mental illness regardless of diagnosis

NAMI CLASSES:

- **NAMI Basic** – available online, teaches fundamentals of caring for you, your family and your child with mental illness
- **NAMI Peer-to-Peer** - education course on the topic of recovery for any person with serious mental illness who is interested in establishing and maintaining wellness

* Located outside of Randolph County but available to Randolph County residents

** Online & National Hotline numbers

- **NAMI Family-to-Family/Familia-a-Familia** - family education program designed to foster learning, healing and empowerment among family members and close friends of individuals with serious brain disorders (mental illness)
- **NAMI Homefront** – available online, educational program for families, caregivers and friends of military service members and vets with mental health conditions

****211 United Way Help Line**

Services: 24/7 connection to resources and agencies near you Dial 211
Website: <https://www.211helps.org/>

ALCOHOL MISUSE & RECOVERY

For a current list of Alcohol Support Groups, call (618) 282-6233 ext.105
.....**or send email to allianceinfo@comwell.us**

Alcoholics Anonymous – Find AA Meetings

Services: **Call hotline** to help you stay sober, for information on meetings and AA services, to find treatment programs for alcohol abuse, if you are a friend or family member of an alcoholic, or if you are an AA member who has relapsed
Contact Info:Hotline (800) 643-9618
Website: <https://alcoholicsanonymous.com/aa-meetings/illinois/>
<https://alcoholicsanonymous.com/5-reasons-to-call-an-aa-24-hour-hotline/>

***Alcoholic Rehabilitation Community Home (ARCH)**

Services: ARCH is a Level III.1 extended care residential treatment center providing individualized care for men struggling with substance use disorders.
Contact Info: 1313 21st Street, Granite City, IL 62040(618) 877-4987
Website: <http://www.archhouse.org/>

..... See “SUBSTANCE MISUSE & RECOVERY” for additional resources.

ALZHEIMERS

***Alzheimer’s Association**

Services: here day or night with information, emotional support, caregiving tools and referrals to healthcare, financial and legal resources. Translation services are available.
Contact Info: 805 W. Deyoung St., Marion, IL 62959(618) 985-1095 24/7 Helpline (800) 272-3900
Website: <https://www.alz.org/illinois>

****Alzheimer Support**

Services: Alzheimer Support is a free service that assists Randolph County families who have loved ones with Alzheimer’s disease or dementia. Through the free search tool and database of Alzheimer’s care facilities, families in need of care for their loved ones can locate licensed care homes and communities in the Randolph County area that are best equipped to provide care for their loved ones.
Contact Info: Memory Care Specialist 24/7 Helpline(888) 595-9951
Website: <https://www.alzheimersupport.com/memory-care/illinois/>

****Alzheimer’s.gov**

Services: Alzheimer’s & related dementias, clinical trials, tips for caregivers; life with dementia, resources for healthcare and taking action.
Website: <https://www.alzheimers.gov/>

* Located outside of Randolph County but available to Randolph County residents
** Online & National Hotline numbers

****Alzheimer’s Hotline**

Contact Info:(800) 272-3900

****National Institute on Aging - Alzheimer’s**

Services: provide current, comprehensive and unbiased information(800) 438-4380

Website: <https://www.nia.nih.gov/health/alzheimers-disease-fact-sheet>

ANIMALS

Animal Control – Randolph County

Contact Info: Randolph County dispatch.....(618) 826-5484

Website: <https://am.randolphco.org/index.php/gov-menu/appointed-officials/2015-12-04-02-54-17>

City of Chester Animal Control

Website: <https://www.chesterill.com/departments/animal-control/>

***Professional Wildlife Removal**

Contact Info:(618) 861-6118

Website: <http://www.wildlife-removal.com/city/IL-Chester.htm>

****Animal Abuse Hotline**

Contact Info:(757) 622-7382

AUTISM

***ABA of Illinois - Applied Behavior Analysis**

Services: our behavior team delivers clinical and consultative support to clients in the natural environment. We design and implement support strategies that promote positive behavior change with a focus on preventing problem behaviors before they occur. We accomplish this through teaching new skills and improving quality of life through person-centered planning and behavior support services.

Contact Info: 3412 Office Park Dr., Marion, IL 62959(309) 635-3513

Website: <https://www.abaofillinois.org>

***Acorn Health - ABA Autism Therapy in Illinois**

Services: we look for functional relationships between a child’s behaviors and his or her environment. The goal is to increase desirable behaviors that lead to quality of life and reduce behaviors that interfere with your child’s ability to communicate and learn.

Contact Info: 1716 Corporate Crossing Suite 3, Scott Air Force Base, IL (618) 226-4687

400 St. Louis Street, Suite 1, Edwardsville, IL (618) 226-4697

722 West County Road, Suite F, Jerseyville, IL (618) 226-5646

Website: <https://www.acornhealth.com/states/aba-autism-therapy-illinois>

***Autism Society of Southern Illinois**

Services: we create connections, empowering everyone in the Autism community with the resources needed to live fully.

Contact Info: P.O. Box 2621, Carbondale, IL 62901(314) 690-3855

Website: <https://www.autismsocietyysi.org>

***BlueSprig**

Services: we are dedicated to providing the compassionate, individualized care that your child deserves in the environment that is best suited for their needs. At BlueSprig, we provide Applied Behavior Analysis (ABA) therapy services for children of different ages and levels, in various settings and at convenient hours.

* Located outside of Randolph County but available to Randolph County residents

** Online & National Hotline numbers

Contact Info: 343 Fountains Pkwy, Ste 201, Fairview Heights, IL 62208(618) 515-1441
Website: <https://www.bluesprigautism.com>

***Center for Autism and Related Disorders**

Services: the Center for Autism & Related Disorders (CARD) is one of the world’s largest organizations using Applied Behavior Analysis (ABA) in the treatment of Autism Spectrum Disorder. CARD offers clinic, home, community and telehealth based services, based around the individualized recommendation. CARD has over 30 years of experience in the field of ABA with extensive resources available to their families.
Contact Info: 634 N. Main St. Ste. 4, O’Fallon, IL 62269(618) 726-5870
Website: <https://www.beaminghealth.com>

***Center for Autism Spectrum Disorders**

Services: the Center for Autism Spectrum Disorders (CASD) is an inter-professional training and research center providing the Southern Illinois region high-quality services and leadership for individuals with Autism Spectrum Disorder and their families. Our center focuses on community service, student training, and research
Contact Info: Southern Illinois University, 625 Wham Dr., Rm 124, Carbondale, IL 62901
.....(618) 453-7130
Website: <https://www.casd.siu.edu/>

***Centerstone CASTLE Services**

Services: CASTLE is an intensive, evidence-based therapy program for children between the ages of three and nine years old who have been diagnosed with Autism Spectrum Disorder (ASD). Serving children and families in Southern Illinois.
Contact Info: 402 East Plaza Dr., Ste. 5, Carterville, IL 62918(877) 467-3123
Website: <https://www.centerstone.org/castle/>

***Emergent Learning Centers**

Services: we deliver outstanding individual and group intervention services for children and youth. We have dedicated treatment centers, provide consultation and support in homes and schools and offer telehealth services across the country.
Contact Info: Headquarters: 2055 Craigshire Road, Suite 230, St. Louis, MO 63146
.....(314) 275-0506
Locations: St. Louis, MO, Edwardsville, IL, COMING SOON Waterloo, IL
Website: <https://www.emergentlearningcenter.com>

***Illinois Center for Autism**

Services: a not-for-profit community based mental health treatment and educational agency dedicated to serving people with Autism Spectrum Disorder. Referrals are made through school districts, hospitals, doctors, and the Department of Human Services. Our goal is to educate children and adults with autism to help them achieve their highest level of independence in their home, school, and community.
Contact Info: 1306 Wabash Ave., Belleville, IL 62220 (618) 416-7100
548 S. Ruby Ln., Fairview Heights, IL 62208 (618) 398-7500
Website: <https://www.illinoiscenterforautism.org>

***The Autism Clinic at Hope (TAC)**

Services: The Autism Clinic at Hope is committed to giving children with Autism Spectrum Disorder professional care and attention so that they can soar. We know that the best caregivers are families and we offer the training, advice and support that parents and other family members need. Our Board Certified Behavior Analysts (BCBA) specialize in providing early intensive behavior intervention. At our clinic, we provide Applied Behavior Analysis (ABA) therapy for children between ages of 0 to 8 years old. Our Licensed Clinical Psychologist provides autism diagnostic evaluations for individuals up to the age of 18.
Contact info:(217) 525-8332
Locations: 3022 South Park Ave., Ste. B, Herrin, IL 62948
4559 Benes Ave., Glen Carbon, IL 62034

* Located outside of Randolph County but available to Randolph County residents
** Online & National Hotline numbers

145 Springfield Ct., O'Fallon, IL 62269

Website: <https://www.theautismclinic.org/>

***The Autism Program of Illinois (TAP)**

Services: TAP is a service network that serves and supports persons with Autism Spectrum Disorder and their families through a coordinated network of providers, parents, and university programs while developing, utilizing, and sharing best and promising practices.

Contact info:(217) 953-0894

Locations: Home office: 5220 S. 6th St, Ste 2300B, Springfield, IL 62703

Partners: *SEE ABOVE: *The Autism Clinic (TAC) & Center for Autism Spectrum Disorders*

Website: <https://www.tap-illinois.org>

BRAIN INJURY (TRAUMATIC)

SERVICES & TREATMENT

***Brain Injury Association of America**

Services: BIAA's mission is to advance awareness, research, treatment and education to improve the quality of life for all people affected by brain injury.

Contact Info: 2265 Schuetz Road, St. Louis, MO 63146(314) 426-4024

Website: <https://www.biausa.org>

***Brain Injury Association of Illinois**

Services: Statewide non-profit organization providing an information & resource call center, education and programs and services to individuals who have sustained a brain injury, family members/caregivers, rehabilitation professionals and the community at large.

Contact Info: P.O. Box 70, Palos Heights, IL 60463(312) 726-5699

Website: <https://www.biaill.org>

<https://www.braininjurytoolbox.com> Brain Injury Toolbox – educational materials

***Brain Injury Foundation of St. Louis**

Services: it is the mission of the Brain Injury Foundation of St. Louis to provide innovative community based solutions to meet the specific social and vocational needs of individuals with brain injuries.

Contact Info: 7850 Manchester Road, St. Louis, MO 63143 (800) 699-6443 OR (314) 645-7230

Website: <https://www.bifstl.org>

***Missouri Brain & Spine**

Services: our multi-disciplinary approach includes a cooperative patient management team comprised of experts from the fields of neurology, neuroscience, functional neurology, psychology, physical & occupational rehabilitation, chiropractic and speech & language therapy to serve your health needs.

Contact Info: 141 Chesterfield Business Pkwy, Chesterfield, MO 63005(636) 778-4300

Website: <https://mobrainandspine.com>

***NeuroRestorative**

Services: brain injury rehabilitation programs and services for children & teens.

Contact Info: 306 W. Mill St., Carbondale, IL 62901 (800) 743-6802 OR (618) 529-3060

Website: <https://www.neurorestorative.com>

***The Rehabilitation Institute**

Services: let our rehabilitation experts create a custom care plan to help you regain as much function as possible after a brain injury.

Missouri Contact Info: 4455 Duncan Ave., St. Louis, MO 63110(314) 658-3800

Website: <https://encompasshealth.com/rehabinstitutes/>

Southern Illinois Contact Info: 2351 Frank Scott Pkwy E, Shiloh, IL 62269(618) 206-7600

Website: <https://encompasshealth.com/locations/shilohrehab/our-programs/neuro>

* Located outside of Randolph County but available to Randolph County residents

** Online & National Hotline numbers

***Washington University and Barnes-Jewish Neurology & Neurosurgery Center**

Services: faculty at Barnes-Jewish & Washington University Neuroscience Center offer comprehensive treatment to all levels and stages of traumatic brain injury.
Contact Info: 4921 Parkview Pl #6-C, St. Louis, MO 63110(314) 362-1408
Website: <https://www.barnesjewish.org/Medical-Services/Neurology-Neurosurgery/Brain-and-Head-Injuries>

SUPPORT GROUPS

***Brain Injury and Stroke Support Group**

Contact Info:(618) 942-2171 ext. 35312
The Christian Life Center, 1901 N, Park Avenue, Herrin, IL

***MENTOR – Center for Comprehensive Services – TBI Support Group**

Contact Info: Carbondale, IL(618) 529-3060

CANCER

Chemotherapy and Infusion Center (Memorial Hospital of Chester)

Services: chemotherapy, blood transfusions, IV therapy and management, infusions for most medical issues, Port-A-Cath care and lab draws, wound care. Oncologist on-site weekly for Specialty Clinic appointments.
Contact Info: 1900 State Street, Chester, IL 62233618-826-4581 ext. 1366
Website: <https://www.mhchester.com/chemotherapy-infusion-center>

Lung Screening Program (Memorial Hospital of Chester)

Services: the Lung Cancer Screening Program is covered by most private insurance plans, Medicare and Medicaid. Patients must have a shared decision-making visit with a medical provider prior to their lung cancer screening test. Check with your provider or call our Nurse Navigator at the phone number below for assistance.
Contact Info: 1900 State Street, Chester, IL 62233 855-399-LUNG (5864)
Website: <https://www.mhchester.com/lung-screening>

***American Cancer Society**

Contact Info: 4503 West DeYoung St., Ste, 200C, Marion, IL 62959(618) 998-9898
Website: <https://www.cancer.org/>

***Austin Wade Foundation**

Services: financial help for families who have a child currently battling cancer in Southern IL
Contact Info: 210 Scout Cabin Rd., Carterville, IL 62918
Website: <https://www.awfsoil.org/>

***Illinois Breast and Cervical Cancer Program**

Services: free breast and cervical cancer screening for women who are uninsured, underinsured or have a deductible
Contact Info: 19 Public Sq., Ste. 150, Belleville, IL 62221(618) 825-4412
Website: <http://dph.illinois.gov/topics-services/life-stages-populations/womens-health-services/ibccp>

***SIH Breast Center (Southern Illinois Healthcare)**

Services: breast surgery, detection and diagnosis, mammograms, cancer care treatment & diagnosis, high-risk clinic and prevention
Contact Info: 1237 East Main St., Ste. C1, Carbondale, IL 62901(618) 457-2281
Website: <https://www.sih.net/locations/sih-breast-center>

* Located outside of Randolph County but available to Randolph County residents

** Online & National Hotline numbers

***SIH Cancer Institute (Southern Illinois Healthcare)**

Services: cancer care, treatment and diagnosis; chemotherapy, detection and diagnosis, oncology and hematology, radiation therapy, surgical oncology, cancer treatment, colorectal cancer treatment, facing cancer treatment, prevention and support.

Contact Info: 1400 Pin Oak Dr., Carterville, IL 62918(618) 985-3333

Website: <https://www.sih.net/locations/sih-cancer-institute>

***Siteman Cancer Center at Memorial Hospital (Shiloh)**

Services: the treatment center offers convenient access to nationally recognized cancer care including clinical trials for residents of southern and central Illinois and beyond.

Contact Info: 1418 Cross St., Shiloh, IL 62269Main (618) 607-1340

..... Appointments (314) 747-7222

Website: <https://siteman.wustl.edu/visiting/illinois/>

****Cancer Information Services**

Services: provide the latest and most accurate cancer information

Contact Info: (800) 4-CANCER

Website: <https://www.cancer.gov/contact>

CELL PHONE

****LifeWireless**

Services: free unlimited data, talk & text; hotspot 5GB, and smartphone (or bring your own)

Contact Info:(888) 543-3620

Website: <https://www.lifewireless.com/>

****SafeLink**

Services: free cell phone and minutes program

Contact Info:(800) 723-3546

Website: <https://www.safelinkwireless.com/Enrollment/Safelink/en/Web/www/default/index.html#!/newHome>

CENTER FOR DISEASE CONTROL AND PREVENTION

****U.S. Centers for Disease Control and Prevention (CDC)**

Services: online educational resources

Contact Info:(800) 232-4636

Website: <https://www.cdc.gov/>

CHILD ABUSE

Illinois Department of Children & Family Services (Sparta)

Contact Info: 202 West Jackson St. #B, Sparta, IL 62286(618) 443-4317

****Childhelp National Child Abuse Hotline**

Services: if you are being hurt, know someone who might be hurting, or are afraid you might hurt another, call or text the hotline. Services include crisis intervention, information and referrals to thousands of emergency, social service and support resources. All calls are confidential.

Contact Info: Call (800) 4 A Child....Text (800) 422-4453

Website: <https://www.childhelp.org/>

* Located outside of Randolph County but available to Randolph County residents

** Online & National Hotline numbers

****Illinois Department of Children and Family Services Child Abuse Reporting Hotline**

Contact Info: (800) 25 ABUSE (800) 252-2873
 TTY (800) 358-5117
Website: <https://dcfsonlinereporting.dcf.illinois.gov/>

CHILD ADVOCACY

***Birth to Five Illinois**

Services: providing a statewide mechanism to engage local stakeholders. Gathering family opinion and creating a strategic plan that clearly identifies the need for the expansion of quality early learning in every region. Enabling local stakeholders to come together and address the early childhood needs within their own communities.
Contact Info: 1226 Towanda Ave, Bloomington, IL 61701 (773) 739-2107
Email: info@birthtofiveil.com
Website: <https://www.birthtofiveil.com/>

***St. Clair County Child Advocacy Center**

Services: provide a safe child-friendly environment for conducting forensic interviews and medical evaluation; assist with investigations of sexual and serious physical abuse of children, as well as with interviews of children who have witnessed violent crimes
Contact Info: 300 West Main St., Ste. 3, Belleville, IL 62220 (618) 277-1134
 423 West Holmes St., Chester, IL 62233 (618) 277-1134
Website: <https://www.stclairchildadvocacycenter.org/>

CHILDREN & FAMILY

ADOPTION & FOSTER CARE

Caritas Family Solutions

Services: private domestic adoption program, pregnancy options counseling, three types of foster care, intact family services, Fontebella maternity home, parenting classes, St. John Bosco Children’s Center, community integrated living arrangements, anger management, etc.
Contact Info: 1805 N. Market, Sparta, IL 62286 (618) 708-3490
 900 Royal Heights Rd., Suite 2150, Belleville, IL 62226 (618) 394-5900
 10286 Fleming Road, Carterville, IL 62918 (618) 985-2000
Website: <https://caritasfamilysolutions.org/>

Life Network of Southern Illinois

(All services are FREE and confidential)
Services: pregnancy testing, limited ultrasound, limited STI and treatment, pregnancy options counseling, adoption education, parenting & life skills classes, childbirth, newborn care and breastfeeding classes, baby resources, dad’s mentoring programs/resources, abortion recovery program, community/medical resources, abstinence outreach education and professional counseling
Contact Info: 324 N. Main Street, Red Bud, IL 62278 (618) 282-4225
Hours: Tuesday - Friday, 8:30 a.m.-4:30 p.m.
Website: <https://supportmylifenet.com/>

***Equipping the Called**

Services: foster & crisis closet provides new/gently used, current styled clothing, undies, diapers and toiletries for foster families in Southern Illinois.
Contact Info: 850 Vandalia Street, Suite 310 & 320, Collinsville, IL 62234 (618) 529-5888
Email: info@equippingthecalled.org
Website: <https://equippingthecalled.org/>

* Located outside of Randolph County but available to Randolph County residents
 ** Online & National Hotline numbers

***Foster Family Resource Center of Southern Illinois**

Services: primarily assist families with DCFS verified new placements (usually within 90 days of a new placement) with “immediate need” items free of charge which may include diapers, formula, clothing, shoes, beds, cribs, bedding, car safety seats and personal care products.

Contact Info:

Two Bugs & a Bean, 1237 E. Main St. (University Mall), Carbondale, IL 62901(618) 529-5888

Website: <https://ffrcsi.org/>

***Hoyleton Youth & Family Services**

(Medicaid & other insurance)

Services: include “Become a Foster Parent,” professional counseling services for every need, Therapeutic Residential Care to support youth with a range of developmental delays, and Puentes de Esperanza – a place for Hispanic members to find critical resources.

Contact Info: Hoyleton Fairview Heights Campus & Puentes De Esperanza

- 8 Executive Dr., Ste. 200, Fairview Heights, IL 62208(618) 688-4727
- Lehre Haus, 300 N. Church St., Belleville, IL 62220(618) 416-7337
- Hagar House, 6015 & 6017 W. A St., Belleville, IL 62223(618) 416-7670
- Hoyleton Children’s Home, 350 N. Main St., Hoyleton, IL 62803.....(618) 493-7382
- Marion Office, 930 W. Cherry St., Marion, IL 62959(618) 315-2857
- New location coming soon to Chester

Website: <https://hoyleton.org/>

***Lutheran Child and Family Services of Illinois**

(Sliding fee discount; insurance not accepted)

Services include:

- Adoption: assisting you through every step of your adoption journey
- Birth Parent Services: providing expectant mothers and fathers with compassionate, respectful and confidential assistance as you consider your child’s future as well as your own.
- Counseling: providing trauma-informed counseling to assist individuals in leading healthier lives
- Foster Care: helping children who have experienced trauma to feel safe, build a future and return to family.

Contact Info: 711 Insight Avenue, O’Fallon, IL 62269(618) 234-8904

Website: <http://www.lcfs.org/>

***Lutheran Social Services of Illinois**

Services: LSSI provides a variety of services to include: foster care & family support, prisoner & family ministry, post-adoption, mental health, alcohol/drug treatment, intellectual/developmental disabilities; affordable housing & home care for seniors; and youth services. Not all services are provided at all locations. For more information, contact your local office.

Contact Info: Marion Children’s Program: 1616 W. Main St., Marion, IL 62959(618) 997-9196

Marion PFM:102 E. DeYoung St., Marion, IL 62959(618) 997-9076

East St. Louis PFM:1919 State St., East St. Louis, IL 62205.....(618) 900-1918

Website: <https://www.lssi.org/>

CAMPS

***Camp Wartburg (a ministry of LCFS of IL)**

Services: Camp Wartburg is a retreat center and camp facility for youth, adults and families of all backgrounds to encounter God’s creation. The facilities provide ideal space for a variety of summer camps, four-season outdoor education events for organized groups and schools, and year-round facility rentals for one-day and overnight retreats, family reunions and other events.

Contact Info: 5705 LRC Road, Waterloo, IL 62298(618) 939-7715

Email: info@equippingthecalled.org

Website: <https://campwartburg.com>

* Located outside of Randolph County but available to Randolph County residents

** Online & National Hotline numbers

EARLY CHILDHOOD EDUCATION & CARE

Brightpoint (previously Children’s Home & Aid)

Services: Serving Bond, Clinton, Madison, Monroe, Randolph, St. Clair & Washington Counties

Head Start: See *Western Egyptian Economic Opportunity Council, Inc.*

Preschool for All: Free for children three to five years of age who meet eligibility

Chester School District	(618) 826-2354
Red Bud School District.....	(618) 282-3507
Sparta School District	(618) 443-5331
Steeleville School District	(618) 965-3469

Child Care Centers and Preschool Programs: Ages served, operating hours & tuition vary

Discovery Youth Center (Red Bud)	(618) 282-6222
Hakuna Matata Kid Care (Steeleville).....	(618) 965-4114
Prairie Du Rocher Elementary	(618) 284-3530
St. John’s Lutheran Day Care (Red Bud)	(618) 282-3873
Red Bud Pre-K.....	(618) 282-3858

Licensed Family Child Care Homes: Ages served, operating hours & tuition vary

Renee Neal (Chester)	(618) 615-2423
Sara Young (Coulterville).....	(618) 317-3669

Child Care Resource and Referral.....(800) 467-9200 ext. 390

Child Care Assistance Program.....(800) 847-6770 ext. 360

Website: <https://www.brightpoint.org/>

Western Egyptian Economic Opportunity Council, Inc. (Head Start)

See information under Anchor Agencies

MISCELLANEOUS YOUTH & FAMILY SERVICES

ComWell

See information under Anchor Agencies

DHS Family Community Resource Center

See information under Anchor Agencies

Randolph County Birth to Three program in partnership with Chester School District

Services: this grant-funded program is dedicated to serving pregnant moms and children under the age of three years old. This FREE program offers prenatal education and family and baby resources.

Contact Info: (618) 680-0154

Hours: Monday-Friday 8:00 a.m.-4:00 p.m.

Randolph County Health Department

See information under Anchor Agencies

Regional Office of Education (ROE)

Services: include truancy intervention, licensure, testing, background checks, professional development, Illinois equivalency (GED) and job search assistance

Contact Info: 134 North Main St., Red Bud, IL 62278.....(618) 826-5471

Website: <https://www.roe45.net/>

University of Illinois Extension – Randolph County

Services: helping people, businesses and communities find answers to grand challenges

- **4-H Youth Development:** youth ages 8-18 completing hands-on projects in areas such as health, science, agriculture and citizenship in a positive environment where they receive guidance from adult mentors and are encouraged to take on proactive leadership roles.

* Located outside of Randolph County but available to Randolph County residents

** Online & National Hotline numbers

- **Commercial Agriculture:** forming a powerful source of information and insight for agricultural producers in our region through the expertise of local educational specialists combined with resources of the statewide Illinois Extension system.
- **Community & Economic Development:** helping community leaders, residents and communities build capacity to make timely and effective decisions, to use information wisely, and to engage the entire community in working together better. Extension educators design and deliver education programs and technical assistance including workshops, small group consultations, and online tools and resources.
- **Energy & Environment:** providing answers to questions regarding environmental stewardship through best practices information based on peer-reviewed science.
- **Family Life:** connecting families of all stages with information and resources that are based on sound science and best practices.
- **Horticulture:** supplying a vast collection of resources addressing horticultural interests.
- **Illinois Nutrition Education Programs:** providing nutrition education to individuals and families through the Supplemental Nutrition Assistance Program (SNAP).
- **Leadership & Local Government:** delivering educational opportunities designed to specifically address current issues that many local governments encounter, with particular emphasis on policymaking and leadership.
- **Local Foods & Small Farms:** providing information and insight into how fruits, vegetables, and food products move through their life cycle and including information on other topics such as the use of pesticides during the growing season and the practice of composting food waste.
- **Nutrition and Wellness:** helping families live their best lives through understanding wellness topics such as food safety, nutrition, and chronic disease prevention and management.
- **Schools Online:** sharing educational resources for parents and teachers to help students understand important information about topics that touch their everyday lives.

Contact Info: 1403 Hillcrest Dr., Sparta, IL 62286(618) 443-4364

Website: <https://extension.illinois.edu/fjprw>

***Boys and Girls Club of Carbondale**

Services: youth development programs and activities for children ages 6-18

Contact Info: 300 East Main St., Suite 4, Carbondale, IL 62902(618) 457-8877

Website: <https://bgcsi.org/>

***Centerstone**

See information under Anchor Agencies

***Lutheran Social Services of Illinois**

Services: Intact Family Services provides intensive case management and follow up services to families who have been reported to DCFS.

Contact Info: 1616 W. Main Street, Marion, IL 62959(618) 997-9196

Website: <https://www.lssi.org/>

***Planned Parenthood**

Services: abortion, birth control, cancer, emergency contraception, gender identity, health and wellness, pregnancy, sexually transmitted infections (STDs), sex and relationships, sexual orientation, etc.

Contact Info: 317 Salem Place, Fairview Heights, IL 62208(618) 277-6668

200 North Emerald Lane, Carbondale, IL 62901(800) 230-7526

Website: <https://www.plannedparenthood.org/>

***The Night’s Shield**

Services: the Family Advocacy Center program offers a variety of services to help strengthen families including case management & child advocacy, life skills/coaching, parenting classes/groups, family store with food and clothing, community outreach and a computer lab.

Contact Info: Children’s Shelter - 301 E. Garland St., West Frankfort, IL 62896.....(618) 932-6400

Website: <https://www.thenightsshield.org/>

See additional services under Homeless Shelters

* Located outside of Randolph County but available to Randolph County residents

** Online & National Hotline numbers

****CDC Infant and Toddler Nutrition**

Website: <https://www.cdc.gov/nutrition/InfantandToddlerNutrition/index.html>

****Department Of Children and Family Services (DCFS)**

Services: include but are not limited to, family preservation, foster care, adoption, guardianship and the Extended Family Support Program (EFSP) that assists relative caregivers who are caring for a relative’s children who are not part of the child welfare system

Contact Info:(800) 232-3798

Child Abuse Hotline(800) 252-2873

Website: <https://dcfs.illinois.gov/loving-homes.html>

****Illinois CARES Line: 24/7**

Services: provide referral services for children, youth and families if child is at risk to themselves or others or having a mental health crisis.

Contact Info: TTY (773) 523-4504 (800) 345-9049

Website: <https://www.carescrisisline.com/>

****Illinois Coalition for Community Service**

Services: youth programs include After School Matters program, ICCS Jr. engaging youth in volunteerism, 24/7 Crisis Intervention and Community Youth Services Solutions.

Website: <https://www.iccscares.org/>

CRISIS

ComWell

24 Hour Crisis Line(888) 855-0034

See additional information under Anchor Agencies

****988: National Suicide Prevention Lifeline**

Services: free and confidential support for people in distress, prevention and crisis resources for you or your loved ones; available 24 hours a day; English and Spanish

Contact Info:(800) 273-8255

****Illinois CARES Line: 24/7**

Services: provide referral to services for children, youth and families, if child is at risk to themselves or others or having a mental health crisis.

Contact Info: TTY (773) 523-4504 (800) 345-9049

Website: <https://www.carescrisisline.com/>

****Illinois Warm Line**

Services: provides crisis prevention and wellness support to anyone 12+ in Illinois

Contact Info:(866) 359-7953

Hours: Monday-Saturday 8:00 a.m.-8:00 p.m.

****Crisis Text Line**

- Text “HOME to 741741 from anywhere in the USA, anytime, regarding any type of crisis
- A live, trained crisis counselor receives the text and responds quickly
- The volunteer crisis counselor will help you move from a hot moment to a cool moment

Website: <https://www.crisistextline.org/>

* Located outside of Randolph County but available to Randolph County residents

** Online & National Hotline numbers

DENTAL CARE

LOCAL

Barrett Family Dental

Services: family, cosmetic and restorative dentistry
Contact Info: 114 Park Plaza Dr., Red Bud, IL 62278(618) 282-6700
Hours: Monday-Wednesday 8:30 a.m.-4:30 p.m., Thursday 8:30 a.m.-3:00 p.m.

Chester Family Dental

(Private insurance)
Contact Info: 1654 State St., Chester, IL 62233(618) 826-5017
Hours: Monday, Tuesday, Thursday 8:00 a.m.-5:00 p.m.
 Wednesday, Friday 7:00 a.m.-4:00 p.m. CLOSED Saturday & Sunday
Website: <https://www.chesterfamilydental.com/meet-the-doctors>

Stephanie E. Graham, DMD

(Private insurance)
Contact Info: 530 E. Broadway St., Sparta, IL 62286(618) 443-4721
Hours: Monday, Tuesday, Wednesday, Friday 8:30 a.m.-5:00 p.m.

Tina Stulce, DDS

Contact Info: 307 South Main St., Red Bud, IL 62278(618) 282-4466
Hours: Tuesday-Friday 8:00 a.m.-5:00 CLOSED Monday, Saturday & Sunday

Trost Dental

Contact Info: 210 South Main St., Red Bud, IL 62278(618) 282-8282
Hours: Monday & Tuesday 9:00 a.m.-5:00 p.m., Wednesday 8:00 a.m.-1:00 p.m.
 Thursdays 8:00 a.m.-4:00 p.m. CLOSED Friday, Saturday & Sunday
Website: <https://thinkbraces.com/>

REDUCED FEES

***Paul B. Hanks Dental Clinic (at Lewis & Clark Community College)**

Services: provided by dental hygiene students of Lewis and Clark under the supervision of licensed dentists and dental hygienists. \$28 flat fee includes all exams, x-rays and preventive services.
Contact Info: 5800 Godfrey Road, Godfrey, IL 62035(618) 468-7000
Website: <https://www.lc.edu/student-services/health-services/dental-clinic.html>

***Olson Orthodontics**

Services: smiles change lives, reduced orthodontics
Contact Info: 741 W. State St., Suite 2, O’Fallon, IL 62269(618) 624-0800
Website: <https://www.olsonbraces.com/>

***Shawnee Health Care Dental**

Services: dental services provided to migrant/seasonal workers; Medicare & Medicaid accepted; bilingual
Contact Info: 402 S. Lewis Lane, Carbondale, IL 62901(618) 519-9200
 3115 Williamson County Parkway, Marion, IL 62959(618) 519-9200
Website: <https://www.shawneehealth.com/locations/>

***SIHF Healthcare – Dental Care**

Services: dental services; all income levels accepted, sliding scale fee, Medicaid, All Kids & uninsured.
Contact Info: 6000 Bond Avenue, Centreville, IL 62207(618) 332-2740
 2166 Madison Avenue, Granite City, IL 62040(618) 877-4488

* Located outside of Randolph County but available to Randolph County residents
 ** Online & National Hotline numbers

1215 Vandalia St., Collinsville, IL 62234(618) 343-6015
Website: <https://www.sihf.org/patient-care-services/dental-care>

***SIU Community Dental Center**

Services: accepts self-pay at discounted rates. Patients of all ages are welcome. We accept cash and/or credit card payments only on day of service.
Contact Info: 1365 Douglas Dr., Carbondale, IL 62901(618) 453-2353
Website: <https://sah.siu.edu/cdc.php>

***SIU Dental School**

(Accepts Medicaid & most insurance)
Services: provide extensive dental care at one-third cost of private dentists
Contact Info: 1700 Annex St., Alton, IL 62002(618) 474-7000
 601 James R Thompson Blvd, 2nd floor, Bldg. B, East St. Louis, IL 62201... (618) 482-6980
 195 University Park Dr., Edwardsville, IL 62025(618) 650-5781
Hours for All: Monday – Friday, 8:00 a.m.-5:00 p.m.
Website: <https://www.siu.edu/dental/>

DIABETES

Memorial Hospital of Chester

Services: group programs and individual nutrition or diabetes counseling
Contact Info: 1900 State Street, Chester, IL 62233(618) 826-4581
Website: <https://www.mhchester.com/diabetic-resources>

Sparta Community Hospital

Services: individual diabetic counseling and diabetes and nutrition education
Contact Info: 818 E. Broadway Street, Sparta, IL 62286(618) 443-2177
Website: <https://www.spartahospital.com/services/nutrition-therapy/>

***VA Medical Center, Marion**

Services: diabetes - classes for veterans only
Contact Info: 2401 W. Main Street, Marion, IL 62959(618) 997-5311 ext. 54659
 Class is held 3rd Thursday of each month from 9:30 a.m.–11:30 a.m.
Website: https://www.marion.va.gov/services/Diabetes_Education.asp

****American Diabetes Association**

Services: Nationwide hotline allows callers to get answers to questions about diabetes
Contact Info: (800) DIABETES or toll free (888) 342-2383
Website: <https://www.diabetes.org/>

****Children with Diabetes**

Services: online information for children and adults with diabetes
Website: <https://childrenwithdiabetes.com/>

****Diabetes, Digestive & Kidney Diseases**

National Institute of Diabetes, Digestive and Kidney Diseases
Services: online resource for diabetes, digestive and kidney diseases
Contact Info:(800) 860-8747
Website: <https://www.niddk.nih.gov/health-information/community-health-outreach/information-clearinghouses?dkrd=lqdmw0001>

****Illinois Department of Public Health: Diabetes Prevention and Control**

Services: online information for diabetics

* Located outside of Randolph County but available to Randolph County residents

** Online & National Hotline numbers

Contact Info:(217) 782-3300
Website: <http://www.idph.state.il.us/diabetes/>

****Medline Plus: Diabetes (National Library of Medicine)**

Services: provides education materials in English, Spanish & other languages
Website: <https://www.nlm.nih.gov/>

DISABILITY RESOURCES

HOUSING

See HOUSING section

ComWell

See information under Anchor Agencies

DHS Family Community Resource Center

See information under Anchor Agencies

LINC Inc.

Services: opening doors for individuals with disabilities through education, advocacy and independent living

Contact Info: 322 North Main St., Red Bud, IL 62278.....(618) 282-2123

Hours: Monday & Thursday, 9:00 a.m.-4:00 p.m.

Contact Info: #15 Emerald Terrace, Swansea, IL 62226(618) 235-9988

Hours: Monday-Thursday, 8:00 a.m.-5:00 p.m.

Website: <http://www.lincinc.org/>

***Archway**

Services: provide education services for children birth to ,three years of age who have been identified as high risk, premature, developmentally delayed or disabled and their families

Contact Info: 2751 West Main St., Carbondale, IL 62901.....(618) 529-5944

1108 West Willow St., Carbondale, IL 62901(618) 549-4442

Website: <http://www.archwayforchildren.org/>

***Centerstone**

See information under Anchor Agencies

***Division of Specialized Care for Children (DSCC)**

Services: case management and financial assistance for families and children with special needs covering Bond, Calhoun, Jersey, Madison, Macoupin, Monroe, Montgomery, Randolph, St. Clair and Washington counties

Contact Info: 1734 Corporate Crossing, Ste. 1, O'Fallon, IL 62269(800) 322-3722

Website: <https://dsccl.uic.edu/office/st-clair-regional-office/>

***Illinois Guardianship Advocacy Commission**

Services: protect and enforce rights of mentally ill, developmentally disabled, physically handicapped, alcoholic and disabled aged; provide guardian for those unable to make or communicate personal and financial decisions

Contact Info: #7 Cottage Dr., Anna, IL 62906.....(618) 833-4897

Website: <https://www2.illinois.gov/sites/gac/Pages/default.aspx>

* Located outside of Randolph County but available to Randolph County residents

** Online & National Hotline numbers

***Illinois Mentor**

Services: provide an array of home and community-based services for adults with intellectual and developmental disabilities in Southern Illinois counties
Contact Info: 4505 West DeYoung, Ste. 203 C, Marion, IL 62959(618) 997-9470
Website: <https://www.il-mentor.com/marion>

***Southern Illinois Center for Independent Living (SICIL)**

Services: provide support to enable persons from all backgrounds to live and work independently, help with aspects of daily living, and offer assistive services in finding/maintaining a job
Contact Info: 2135 West Ramada Lane, Carbondale, IL 62901(618) 457-3318
Website: <http://sicil1.org/>

DOMESTIC VIOLENCE

***Sexual Assault Family Emergencies (SAFE)**

Services: sexual abuse, sexual assault, survivor options after an assault, counseling and advocacy for survivors, family and friends.
Contact Info: 730 E. 2nd Street, Centralia, IL 62801(618) 533-0475

***Survivor Empowerment Center**

Services: supporting survivors of domestic and sexual violence (and their children) with shelter and education. (Individual needs to call & be screened before they can advise if a bed is available)
Contact Info: 610 South Thompson St., Carbondale, IL 62901(618) 549-4807
24-hour hotline(800) 334-2094
Website: <https://www.empoweringsurvivors.org/>

***Violence Prevention Center Southwestern Illinois**

Services: provides domestic violence help to individuals with safe shelter and supportive services
Contact Info: P.O. Box 831, Belleville, IL 62222(618) 236-2531
24 HOUR CRISIS HOTLINE(618) 235-0892
Website: <https://www.vpcswi.org/>

****Illinois Domestic Violence Hotline**

Contact Info: (877) TO END DV (877) 863-6338
 TTY (877) 863-6339

****The National Domestic Violence Hotline**

Services: here to listen without judgment and help you begin to address what is going on in your relationship; free 24/7
Contact Info: (800) 799-SAFE (800) 799-7233
 TTY (800) 787-3224

EATING DISORDERS

***Alsana St. Louis**

Services: tucked on 55 acres, Alsana St. Louis offers the Adaptive Care Model for treating eating disorders.
Contact Info: 1260 Saint Paul Road, Ballwin, MO 63021(800) 340-0396
Website: <https://www.alsana.com>

***Branz Nutrition Counseling**

Services: offering supportive space where you can receive compassionate care from Certified Eating Disorder Dietitians who are there to walk alongside your journey of health and healing.

* Located outside of Randolph County but available to Randolph County residents

** Online & National Hotline numbers

Contact Info IL: 1161 Fortune Blvd Suite 200, Shiloh, IL 62269.....(314) 804-1848
Contact Info MO: 24 South Gore, Webster Groves, MO 63119.....(314) 804-1848
Website: <https://www.branznutritioncounseling.com>

***Clementine St. Louis**

Services: helping adolescents of all genders replace eating disorders with new healthy skills through personalized care, family involvement, and educational support.
Contact Info: 7190 Christopher Dr., St. Louis, MO 63129(833) 814-4620
Website: <https://www.clementineprograms.com>

***Embodied Self Counseling, Erin Grumley, LPC**

Services: Health at Every Size (HAES) informed therapists understand that to address the food “stuff,” we also need to address the things underneath.
Contact Info: 7346 Manchester Road, Suite 202, Maplewood, MO 63143.....(314) 789-3990
Website: <https://www.eringrumley.com>

***Kylie Dennis PhD LCSW**

Services: full-time specialist in binge eating disorder treatment.
Contact Info: 2821 N. Ballas Rd. Suite 227, St. Louis, MO 63131
Website: <https://www.kyliedennis.com>

***McCallum Place**

Services: providing individualized treatment for eating disorders in children, teens, and adults through multiple levels of intensive care.
Contact Info: 231 W. Lockwood Ave., Ste 202, Webster Groves, MO 63119(833) 789-5934
Website: <https://www.mccallumplace.com>

***McDaniel Nutrition Therapy**

Services: anorexia, bulimia, binge eating disorder, orthorexia, disordered eating - if you are ready for recovery from your eating disorder or looking to maintain your recovery, we can help you on your journey.
Contact Info: 225 S. Meramec Ave Apt 204, St. Louis, MO 63105.....(314) 530-7400
Website: <https://www.mcdanielnutrition.com>

***Saint Louis Behavioral Medicine Institute**

Services: our experienced staff provides treatment for eating disorders in a respective therapeutic environment
Contact Info: 331 Salem Place, Suite 225-A, Fairview Heights, IL 62208..... (618) 825-0051
Website: <https://www.slbmi.com>

***St. Louis Eating Recovery Therapy**

Services: therapy sessions offered to individuals, couples & families. Sessions run 50 min. & cost \$120
Contact Info: 140 Prospect Ave., Kirkwood, MO 63122.....(314) 896-0810
Website: <https://www.eatingrecoverytherapy.com>

****Equip Health – Virtual Eating Disorder Care**

Services: eating disorder treatment that works – delivered at home. Virtual, evidence-based care designed to achieve full recovery.
Contact Info:(855) 387-4378
Website: <https://www.equip.health>

* Located outside of Randolph County but available to Randolph County residents

** Online & National Hotline numbers

EDUCATION

ALTERNATIVE, CAREER AND TECHNICAL EDUCATION

Career Center of Southern Illinois

Services: providing integrated and relevant career and technical education, as well as employability and academic skills for junior and senior students from area high schools, for adults and for “at risk” students
Contact Info: 6137 Beck Rd., Red Bud, IL 62278(618) 473-2222

Monroe Randolph Red Brick School *Regional Safe School*

Contact Info: 134 North Main Street, Red Bud, IL 62278(618) 680-0389

Perandoe Educational Program – SWICC Campus

Services: assuring that all children with disabilities in the bi-county area receive a free and appropriate education as prescribed by State and Federal law.
Contact Info: 500 W. South 4th St, Suite A, Red Bud, IL 62278(618) 282-7228

Perandoe Special Education District Office

Contact Info: 1525 Locust, St., Red Bud, IL 62278.....(618) 282-6251

GED/OTHER

Regional Office of Education (ROE) Monroe-Randolph Counties

Services: include truancy intervention, licensure, testing, background checks, professional development, Illinois equivalency (GED) and job search assistance
Contact Info: 134 North Main St., Red Bud, IL 62278.....(618) 680-0154
Website: <https://www.roe45.net/>

*Southwestern Illinois College – Youth Services

Services: job, college and GED support for students ages 16-24
Contact Info: Red Bud Campus, Rm 173, 500 West South 4th St., Red Bud, IL 62278.....(618) 282-6682

PRIVATE SCHOOLS

Christ Our Savior Lutheran High School

Contact Info: 810 Soldiers Way, Evansville, IL 62242(618) 853-7300

St. John Lutheran School

Contact Info: 302 West Holmes St., Chester, IL 62233(618) 826-4345

St. John the Baptist Catholic School

Contact Info: 519 Hazel St., Red Bud, IL 62278(618) 282-3215

St. John’s Lutheran School

Contact Info: 808 South Main St., Red Bud, IL 62278(618) 282-3873

St. Mark’s Lutheran School

Contact Info: 504 North James St., Steeleville, IL 62288(618) 965-3838

St. Mary’s Catholic School

Contact Info: 835 Swanwick St., Chester, IL 62233.....(618) 826-3120

Trinity Lutheran School

Contact Info: 10247 South Prairie Rd., Red Bud, IL 62278(618) 282-2881

* Located outside of Randolph County but available to Randolph County residents

** Online & National Hotline numbers

PUBLIC SCHOOLS

Chester Elementary School

Contact Info: 650 Opdyke St., Chester, IL 62233(618) 826-2354

Chester High School

Contact Info: 1901 Swanwick St., Chester, IL 62233.....(618) 826-2302

Coulterville Elementary, Jr & High School

Contact Info: 101 West Grant St., Coulterville, IL 62237(618) 758-2881

Evansville Attendance Center

Contact Info: 701 Oak St., Evansville, IL 62242(618) 853-4411

Prairie Du Rocher Elementary School

Contact Info: 714 Middle St., Prairie Du Rocher, IL 62277(618) 284-3530

Red Bud Elementary School

Contact Info: 200 West Field Dr., Red Bud, IL 62278.....(618) 282-3858

Red Bud High School

Contact Info: 815 Locust St., Red Bud, IL 62278.....(618) 282-3826

Sparta High School

Contact Info: 205 West Hood St., Sparta, IL 62286.....(618) 443-4341

Sparta Lincoln School

Contact Info: 203a Dean Ave., Sparta, IL 62286(618) 443-5331

Steeleville Elementary School

Contact Info: 609 South Sparta St., Steeleville, IL 62288.....(618) 965-3469

Steeleville High School

Contact Info: 701 South Sparta St., Steeleville, IL 62288.....(618) 965-3432

SECONDARY EDUCATION

***John A. Logan College (JALC)**

Services: public community college

Contact Info: 700 Logan College Dr., Carterville, IL 62918(618) 985-2828

Website: <https://www.jalc.edu/>

***Rend Lake College (RLC)**

Services: public community college

Contact Info: 468 North Ken Gray Pkwy, Ina, IL 62846.....(618) 437-5321

Website: <https://www.rlc.edu/>

***Southern Illinois University (SIU)**

Services: public university

Contact Info: 1263 Lincoln Dr., Carbondale, IL 62901.....(618) 453-2121

Website: <https://siu.edu/>

* Located outside of Randolph County but available to Randolph County residents

** Online & National Hotline numbers

***Southern Illinois University Edwardsville (SIUE)**

Services: public university
Contact Info: 6 Hairpin Drive, Edwardsville, IL 62026(618) 650-5555
Website: <https://siue.edu>

***Southwestern Illinois College (SWIC)**

Services: public community college
Contact Info: 2500 Carlyle Ave., Belleville, IL 62221(618) 235-2700
Website: <https://www.swic.edu/>

ELECTRONICS

Gadget Ambulance LLC

Services: provide affordable and quality repairs on phones, tablets, gaming consoles, computers & more
Contact Info: 134 West Broadway Street, Sparta, IL 62286(618) 615-6315
Website: <https://www.pcsforpeople.org/eligibility/>

***PCs for People**

Services: PCs for People is a non-profit working to get low cost quality computers and internet into homes of individuals, families and non-profits with low income.
Contact Info: 100 Florida Ave., Belleville, IL 62221(618) 215-3787
Website: <https://www.pcsforpeople.org/eligibility/>

EMPLOYMENT

EMPLOYMENT AGENCIES

***Express Employment Professionals**

Contact Info: 1301 West Main St., Carbondale, IL 62901(618) 457-1001
 314 Fountains Pkwy, Ste B, Fairview Heights, IL 62208(618) 726-2140
 1107 North Perryville Blvd, Perryville, MO 63775(573) 517-4444
Website: <https://www.expresspros.com/>

***Hire Level**

Contact Info: 3911 West Ernestine Dr., Marion, IL 62959(618) 993-9675
 5214 Chain of Rocks Road, Edwardsville, IL 62025(618) 655-1212
Website: <https://hirelevel.com/>

***Labor Finders**

Contact Info: 4024 Butler Hill Rd, Ste. 10, St. Louis, MO 63129(636) 287-3709
Website: <https://www.laborfinders.com/>

***Proman Staffing**

Contact Info: 735 Ste. Genevieve Dr., Ste. Genevieve, MO(573) 883-9900
Website: <https://www.promanstaffing.com/>

***StaffQuick**

Contact Info: 450 N. Kaskaskia St., Nashville, IL 62263(618) 464-0250
Website: <https://staffquickjobs.com/>

* Located outside of Randolph County but available to Randolph County residents

** Online & National Hotline numbers

JOB POSTINGS

County Journal Job Hub

Services: local job postings

Facebook Page: <https://www.facebook.com/countyjournaljobhub>

****Work for Illinois**

Services: State of Illinois career opportunities

Website: <https://work4.illinois.gov/>

MISCELLANEOUS

Southwestern Illinois WorkNet Center

Services: Workforce Investment and Opportunity Act (WIOA) grant services: career planning, job search and resume building assistance available at no cost for all. Training and college tuition assistance for eligible customers.

Contact Info: 1 Taylor St., Suite 204, Chester, IL 62233(618) 826-4709

Hours: Monday-Friday, 8:00 a.m.-4:00 p.m.

Website: <http://www.mawib.org/worknet/Pages/seekers.aspx>

***MERS Goodwill St. Clair County Career and Workforce Development Center**

Services: provides opportunities for persons with barriers to employment to work and live more independently in the community. Services include job readiness, vocational assessment, job finding assistance, Welfare to work programs, veteran employment programs, WIOA programs, group counseling, individual counseling and psychological assessment.

Contact Info: 5720 North Belt West, Ste. 44, Belleville, IL 62226 (618) 978-5104

ENERGY ASSISTANCE

Western Egyptian Economic Opportunity Council, Inc.

See information under Anchor Agencies

EPILEPSY

***Epilepsy Foundation of Greater Southern Illinois**

Services: low-cost neurological evaluations for clients up to age 18 who have a possible or diagnosed seizure disorder

Contact Info: 100 Aviation Dr., Koziara Terminal, Ste. B., Mt. Vernon, IL 62864(618) 244-6680

Website: <http://www.efgreatersil.org/>

FIRE DEPARTMENTS

Baldwin Community Fire Protection District

Contact Info: 309 West Myrtle, Baldwin, IL 62217(618) 785-2520

Chester Fire Department

Contact Info: 1330 State St., Chester, IL 62233(618) 826-2211

Coulterville Volunteer Fire Department – Fire Protection District

Contact Info: 215 East Maple, Coulterville, IL 62237(618) 758-2221

Ellis Grove Fire Department

Contact Info: 501 Eggemeyer Plaza, Ellis Grove, IL 62241(618) 859-3473

* Located outside of Randolph County but available to Randolph County residents

** Online & National Hotline numbers

Evansville Fire Department

Contact Info: 505 Market St., Evansville, IL 62242(618) 853-2213

Percy Volunteer Fire Department

Contact Info: 207 East Pine St., Percy, IL 62272.....(618) 497-8242

Prairie Du Rocher Fire Department

Contact Info: 207 Henry St., Prairie Du Rocher, IL 62277(618) 284-7141

Red Bud Fire Department

Contact Info: 200 East Market, Red Bud, IL 62278(618) 282-2358

Sparta Fire Department

Contact Info: 107 East Jackson, Sparta, IL 62286.....(618) 443-2917

Steeleville Volunteer Fire Department

Contact Info: 107 West Broadway, Steeleville, IL 62288(618) 965-9251

Tilden Volunteer Fire Department

Contact Info: 650 Butler St., Tilden, IL 62292(618) 587-2351

FOOD

FARMERS MARKETS

Chester Farmer’s Market

When: Saturdays, 9:00 a.m. until sold out (May 18 –October 12)
Where: At Chester Square Gazebo (Intersection of Opdyke & State Streets)

Coulterville Markets in the Park

What: Farmers market, craft fair, vendor fair & flea market
When: 1st Sunday of even months 11:00 a.m.-4:00 p.m. (April, June, August, October)
Where: Coulterville City Park For questions, contact Deb Graves @ 618-708-2199

G & C Meyer Farm (Steeleville)

When: Fridays & Saturdays, 9:00 a.m.-4:00 p.m.
Where: 4370 Rockcastle Road, Steeleville For questions, contact Carol Meyer @ 618-615-1362

Prairie du Rocher Farmer’s Market

When: Thursdays, 4:00 p.m.-6:00 p.m. (mid- May through mid-September)
Where: Empty lot in Prairie du Rocher
Informal gathering of vendors

Percy Farmer’s Market

When: Thursdays, 3:00 p.m.-6:00 p.m. (end of May-end of September)
Where: 201 E. Pine St. (Percy Village Hall parking lot)
Contact Percy Village Hall for updated information

Sparta Farmer’s Market

When: Fridays, 3:00 p.m.-6:00 p.m.(May 3rd – October 25th)
Where: 114 W. Jackson St. (Sparta City Hall parking lo

* Located outside of Randolph County but available to Randolph County residents

** Online & National Hotline numbers

FOOD PANTRIES & RESOURCES

Chester Area Christian Pantry

Service Info: available to Randolph County Residents ONLY
Contact Info: 128 A Koeneman Acres, Chester, IL 62233(618) 826-3141
Hours: Monday & Wednesday 9:00 a.m.-2:00 p.m.

Food on the Move – Steeleville Senior Center

Service Info: walk thru food program for individuals in Illinois and Missouri.
Contact Info: 107 W. Broadway, Steeleville, IL 62288 (behind City Hall)
Hours: 1st Friday each month. 12:00-1:30 p.m. No personal verification required

Musketeer Market

Service Info: available to RBHS families in need
Contact Info: Red Bud High School, 815 Locust St., Red Bud, IL 62278(618) 282-3826

RBES Royal Table

Service Info: available to RBES families in need
Contact Info: Red Bud Elementary School, 500 W. Field Dr., Red Bud, IL 62278(618) 282-3858

Red Bud Food Pantry

Service Info: must call the Thursday prior by 5 p.m.
Contact Info: Red Bud Bible Church, 1445 West Market, Red Bud, IL 62278.....(618) 567-1652
Hours: Open two Saturdays each month, may visit once per month.

Sparta Food Pantry

Service Info: must live in Sparta School District, bring ID & letter with current address & fill out paperwork.
Contact Info: 360 East Broadway St., Sparta, IL 62286 (618) 443-2025
Hours: Tuesday & Thursday 10:00 a.m.-12:00 p.m. plus 3rd Saturday 10:00 a.m.-12:00 p.m.

St. John Lutheran Church – Chester, IL

Services: serves residents of Chester only
Contact Info: 302 W. Holmes, Chester, IL 62233(618) 826-4345
Hours: Tuesdays 8:30am-11:30am

St. John Lutheran Church – Sparta, IL

Service Info: open to anyone.
Contact Info: 1110 North Market St., Sparta, IL 62286.....(618) 443-3634
Hours: Tuesday & Thursdays 10:00 a.m.–12:00 p.m.

St. Peter UCC Church

Services: blessing box that holds non-perishables - everyone is welcome to utilize this at all times.
Contact Info: 403 Madison St., Red Bud, IL 62278.....(618) 282-2417

Steeleville Community Food Pantry

Service Info: bring ID or proof of Steeleville School District residency. Can get food every other week.
Contact Info: 303 N. Mulberry, Steeleville, IL 62288.....(618) 965-3119
Hours: Tuesday of each month 9:00 a.m.-12:00 p.m. * Must be signed in by 11:30 .m.

Tilden Food Pantry

Service Info: photo ID required; must complete paperwork with name, address & ages of all receiving food
Contact Info: 703 North Centre, Tilden, IL 62292(618) 317-5131
Hours: 1st & 3rd Tuesday of each month 11:00 a.m.-12:30 p.m.

* Located outside of Randolph County but available to Randolph County residents

** Online & National Hotline numbers

Western Egyptian Economic Opportunity Council, Inc.

Service Info: Randolph County residents ONLY. Must provide proof of residency.

Contact Info: 1820 N. Market, Bldg A, Sparta, IL 62286.....(618) 443-5231

Hours: Thursdays of each month 1:00 p.m.-3:30 p.m.

****Hunger Hotline**

Services: referrals to food pantries throughout the state of Illinois. Provide assistance with applications for food stamps, Medicaid, cash assistance and other income support programs

Contact Info:(800) 359-2163

SUPPLEMENTAL NUTRITION ASSISTANCE PROGRAM (SNAP)

DHS Family Community Resource Center

See information under Anchor Agencies

WOMEN, INFANTS AND CHILDREN (WIC)

Randolph County Health Department

See information under Anchor Agencies

GAMBLING

For a current list of Gambling Support Groups, call (618) 282-6233 ext.105
.....**or send email to allianceinfo@comwell.us**

****National Council on Problem Gambling (NCPG)**

Services: connecting people looking for assistance with a gambling problem to local resources

Contact Info: 800-GAMBLER or text 800GAM

Website: <https://www.ncpgambling.org/>

GOVERNMENT

Randolph County Courthouse

Contact Info: 1 West Taylor St., Chester, IL 62233(618) 826-5000

- Circuit Clerk ext. 150
- Coroner..... ext. 218
- County Clerk..... ext. 115
- Economic Development ext. 221
- E-911 ext. 219
- Land Management ext. 130
- State’s Attorney ext. 193
- Supervisor of Assessments..... ext. 192
- Treasurer ext. 224

Hours: Monday-Friday 8:00 a.m.-4:00 p.m.

Website: <https://randolphcountyil.gov/>

Additional Services:

- Animal Control: enforces state and local laws and ordinances to protect the safety and right of the public and the welfare of animals(618) 826-5484
- Emergency Management: responsible for managing resources and acquiring assets during and after a disaster; also provides disaster preparation training.....(618) 826-5484
- General Assistance (SSI): works with people who have pending Supplemental Security Income (SSI) cases(618) 443-3311
- Health Department: See information under Anchor Agencies(618) 826-5007

* Located outside of Randolph County but available to Randolph County residents

** Online & National Hotline numbers

- Highway Department: responsible for county-designated roads, including planning, design, construction, maintenance, oiling and chipping, mowing, snow removal, engineering, collaboration with municipal and road district jurisdictions regarding road improvements (618) 443-3213
- Sheriff(618) 826-5484
- Superintendent of Schools(618) 939-5650

***Supplemental Security Income (SSI) ***

Services: monthly income for people who are 65 or older, blind or have a disability, and who don't own much or have a lot of income; blind or disabled children may qualify
Contact Info: 250 West Cherry St., Room 104, Carbondale, IL 62901(800) 772-1213
 1670 Lebanon Ave., Lake Christine Center, Belleville, IL 62221(877) 405-0471
Website: <https://www.ssa.gov/>

GRIEF SERVICES

Griefshare

Services: provide guidance and tips, leading to relief, comfort and peace of mind. Find local support groups near you and online.
Website: <https://www.griefshare.org/>

***Heartlinks Grief Center**

Services: a program of Family Hospice, assists grieving children, individuals, families and groups through individual and family counseling, peer support groups and other supportive community programs regardless of ability to pay. "Bridges to Healing" a support group for anyone grieving a suicide loss.
Contact Info: 5110 West Main St., Belleville, IL 62226(618) 277-1800
Website: www.myheartlinks.com

***Hospice of Southern Illinois, Inc.**

Services: Coping with Grief is a FREE educational service provided to the community at various times of the year. Bereavement counselors available.
Contact Info: Belleville, IL(618) 222-5905
 Marion, IL(618) 997-3030
Website: <https://hospice.org/ourcare/grief-support/>

HEARING

DEAF

***School for Hearing Impaired**

Services: School for Hearing Impaired is a public school located in Marion, Illinois. The school is coed with students and includes grades pre-kindergarten through 8th grade.
Contact Info: 801 East Reeves, Marion, IL 62959(618) 997-2472

***SIU Carbondale Clinical Center**

Services: psychological evaluations, counseling, speech-language evaluations and therapy, hearing and central auditory processing evaluations and physical therapy
Contact Info: Wham Bldg. Room 141, Carbondale, IL 62901(618) 453-2361
Website: https://clinicalcenter.siu.edu/speech_services/

****Alexander Graham Bell**

Services: for parents of children who are deaf or hard of hearing
Contact Info:(202) 337-5220
Website: <http://www.agbell.org/DesktopDefault.aspx>

* Located outside of Randolph County but available to Randolph County residents
 ** Online & National Hotline numbers

****Hearing Aid Project**

Services: provide hearing aids and hearing health services to low-income individuals
Contact Info: 720 Main Street, Floor 1, Kansas City, MO 64105(816) 895-2410
Website: <https://hearingaid donations.org/>

MISCELLANEOUS

****CaptionCall**

Services: federally funded program providing phone and services at no cost to benefit people with hearing loss
Contact Info:(877) 557-2227
Website: <https://captioncall.com/>

****Illinois Telecommunications Access Corporation (ITAC)**

Services: provide FREE phone equipment to Illinois residents who are deaf, hard of hearing, speech disabled or deaf-blind
Contact Info: 3001 Montvale Dr., Ste. A, Springfield, IL 62704(800) 841-6167
Website: <https://www.itactty.org/>

HEART

See additional information under Medical-Cardiology

****American Heart Association**

Services: online information for individuals with heart disease
Contact Info: Regional office/Springfield, IL(217) 698-3838
Website: <https://www.heart.org/>

HOME HEALTH SERVICES

At Home Health Care – Sparta Community Hospital

(Medicare certified)
Services: skilled nursing care, physical therapy, occupational therapy, telehealth services, speech & language therapy, home health aide services, and medical social work services
Contact Info: 818 East Broadway St., Sparta, IL 62286(618) 443-2177 ext. 2207
Website: <https://www.spartahospital.com/services/home-healthcare/>

Red Bud Regional Home Care

Services: Alzheimers and dementia care, behavioral health nursing, care transitions, chronic disease management, fall prevention, heart disease, home health aides, infusion therapy, medical social work, medication management, nutritional consult, occupational therapy, pain management, patient/caregiver training, Personal Emergency Response System (PERS), physical therapy, skilled nursing, transition from hospital discharge to home health, speech therapy, and wound, ostomy and continence nursing.
Contact Info: 115 W. Market Street, Ste. 101, Red Bud, IL 62278(618) 282-3338
Website: <https://lhcgroupp.com/locations/red-bud-regional-home-care>

***Amedisys Home Health**

Contact Info: 1901 Frank Scott Pkwy, Suite 4, O’Fallon, IL 62269(618) 622-8854
Website: <https://locations.amedisys.com/il/ofallon>

***Southwestern Illinois Visiting Nurse Association – Services for Seniors**

(Accepts Medicaid)
Services: designated case coordination unit for residents of the following Illinois counties – Bond, Clinton, Madison, Monroe, Randolph, St. Clair, Washington. Homemaking services, home-delivered meals, adult

* Located outside of Randolph County but available to Randolph County residents
** Online & National Hotline numbers

day services, medication management, well-being checks, equipment to ensure safety, emergency response systems, pharmaceutical assistance, housing options and respite care options.
Contact Info: #7 Executive Woods, Swansea, IL 62226(618) 236-5800 or (800) 642-5429
Website: <https://sivna.com/>

****Home Health Hotline**

Services: report complaints or receive information about IL Medicare certified home health agencies.
Contact Info:1(800) 252-4343

HOMELESS SERVICES

Regional Office of Education (ROE)

Services: help homeless children and youth to be able to attend school
Homeless Liaisons:
 Chester: 1901 Swanwick St., Chester, IL 62233(618) 826-2302
 Sparta: 612 East Harrison, Sparta, IL 62286(618) 443-5331
 Steeleville: 701 South Sparta St., Steeleville, IL 62288(618) 965-3432
 Red Bud: 134 N. Main St., Red Bud, IL 62278(618) 680-0154
Website: <https://www.roe45.net/services.html>

Western Egyptian Economic Opportunity Council, Inc.

See information under Anchor Agencies

***The Center for Empowerment and Justice**

Services: free Wi-Fi, coffee and computer use; free laundry service, court support, bike repair, computer repair, and print shop
Contact Info: 213 North Washington St., Carbondale, IL 62901(618) 457-2777

HOMELESS SHELTERS, DOMESTIC SHELTERS & TRANSITIONAL HOUSING

***Charity Home Ministries**

Services: providing safe, stable and appropriate transitional housing, education, mentoring and resource connections to pregnant or parenting teens
Contact Info: P.O. Box 23426, Belleville, IL 62221(618) 300-0771
Website: <https://charitihome.org>

***Family Life Shelter**

Services: shelter to help people get on their feet. Can help with IDs, jobs, vehicles & homes. Open 24 hrs.
Contact Info: 12580 N. Sparrow Lane, Mt. Vernon, IL 622864(618) 242-2002
Website: <https://familylifemtv.com/family-life-shelter>

***Good Samaritan House**

Services: provides unhoused mothers and their children with guidance, shelter and hope
Contact Info: 1825 Delmar Ave., Granite City, IL 62040(618) 876-0607
Website: <https://www.goodsamhouse.org/>

***Good Samaritan Ministries**

Services: provides emergency shelter, transitional living program, soup kitchen, food pantry and emergency assistance
Contact Info: 701 South Marion St., Carbondale, IL 62901(618) 457-5794
Website: <https://goodsamcarbondale.com/>

* Located outside of Randolph County but available to Randolph County residents
 ** Online & National Hotline numbers

***Lifeboat Alliance**

Services: helping the homeless weather life’s storms. (Individual needs to call on their own behalf)
Contact Info: 1717 Jefferson Ave., Mt. Vernon, IL 62864(618) 244-4088
Website: <https://lifeboatalliance.org/>

***Lighthouse Shelter**

Services: shelter, necessities, safety and tools of self-rescue
Contact Info: 1101 North Madison St., Marion, IL 62959.....(618) 993-8180
Website: <http://www.thelighthouseshelter.com/>

***Society of St. Vincent de Paul Ministries**

Services: services are available to individuals located in St. Clair County. If you are homeless and at their center, you are considered to be in St. Clair County.

- Daily Soup Kitchen: Free meals offered 7 days per week, 52 weeks per year
- Outreach Ministry Center: Multi-use space offering programs & services such as Person Identification Program, transportation, homeless services, budgeting classes, resume writing, applications for housing & Social Security, computer center, job skills classes and Job search assistance. Gear Up/Career Gear clothing assistance, prison re-entry services, utility & rental assistance and more.
- OverNite Center: Dusk-to-Dawn OverNite Center is open from 7:00 pm-7:00 am daily as a safe haven for all who come to spend the night & serves as a bridge to other services.
- Thrift Store Ministry: offers low cost clothing, household goods and other merchandise.
- Mobile Soup Bus: goes out into neighborhoods to feed the hungry

Contact Info: 3718 State Street, East St. Louis, IL 62205(618) 394-0126
Website: <https://svdpsouthil.org/>

***Sexual Assault Family Emergencies (SAFE)**

Services: sexual abuse, sexual assault, survivor options after an assault, counseling and advocacy for survivors, family and friends.
Contact Info: 730 E. 2nd Street, Centralia, IL 62801(618) 533-0475
Website: <https://safecrisiscenter.org/aboutus/>

***Survivor Empowerment Center**

Services: supporting survivors of domestic and sexual violence (and their children) with shelter and education. (Individual needs to call & be screened before they can advise if a bed is available)
Contact Info: 610 South Thompson St., Carbondale, IL 62901(618) 549-4807
24-hour hotline(800) 334-2094
Website: <https://www.empoweringsurvivors.org/>

***The Night’s Shield**

Services: Homeless Youth Program serves youth from their 14th to 24th birthday. Night’s Shield identifies young people needing assistance with finding housing, getting a job or enrolling in education or training programs. Second, they provide transitional living for young people legally able to live on their own and third, they provide homeless shelter services to young people for up to 120 days.
Contact Info: Children’s Shelter - 301 E. Garland St., West Frankfort, IL 62896.....(618) 932-6400
Website: <https://www.thenightsshield.org/>

***Violence Prevention Center**

Services: providing emergency domestic shelter, advocacy and counseling for abused women and their dependent children who live in Southwestern Illinois.
Contact Info: P.O. Box 831, Belleville, IL 62222Crisis Line (618) 235-0895

* Located outside of Randolph County but available to Randolph County residents
** Online & National Hotline numbers

HOSPICE

Maple Creek Hospice

(Medicare, Medicaid and all insurance)

Services: providing the necessary support for our patients' physical, spiritual and emotional well-being

Contact Info: 706 South St. Louis St., Sparta, IL 62286 Available 24 hours/day (618) 443-4671

Website: <http://maplecreekhospice.com/>

*Family Hospice of Belleville Area

Services: non-profit healthcare organization that helps guide patients and families through their journey, providing professional care, medications, equipment, supplies and other support services. Serving Monroe, Randolph, St. Clair, Madison, and Clinton counties in Illinois.

Contact Info: 5110 West Main, Belleville, IL 62226(618) 277-1800

Website: <https://familyhospice.org/>

*Hospice of Southern Illinois, Inc.

(Medicare, Medicaid, private insurance)

Services: provide specialized healthcare services for patients and families faced with a life-limiting illness. Our focus is on patient care including symptom management, emotional support and spiritual support.

Contact Info: 305 South Illinois St., Belleville, IL 62220.....(800) 233-1708

204 Halfway Rd., Marion, IL 62959(800) 233-1708

Website: <https://hospice.org/>

*Vitas Hospice Care

Services: caring for patients with an interdisciplinary team comprised of nurses, physicians, aides, social workers, chaplain and other clinical professionals to meet the emotional and spiritual needs of the patient and their family.

Contact Info: 16 Executive Drive, Suite 100, Fairview Heights, IL 62208.....(833) 357-3324

Website: <https://www.vitas.com/locations-search/fairview-heights>

HOSPITALS

Memorial Hospital of Chester

Contact Info: 1900 State St., Chester, IL 62233(618) 826-4581

Website: <https://www.mhchester.com/>

Red Bud Regional Hospital

Contact Info: 325 Spring St., Red Bud, IL 62278(618) 282-3831

Website: <https://www.redbudregional.com/>

Sparta Community Hospital

Contact Info: 818 East Broadway St., Sparta, IL 62286(618) 443-2177

Website: <https://www.spartahospital.com/>

HOUSING

COUNSELING, HOUSING PROGRAMS & RENT ASSISTANCE

Habitat for Humanity

Services: helps families build and improve places to call home

Contact Info: 301 West Broadway St., Sparta, IL 62286(618) 443-3824

* Located outside of Randolph County but available to Randolph County residents

** Online & National Hotline numbers

Western Egyptian Economic Opportunity Council, Inc.

See additional information under Anchor Agencies

MENTAL ILLNESS

ComWell - Melmar (Sparta)

See ComWell under anchor agencies

PUBLIC HOUSING

Randolph County Housing Authority

Services: participates in Section 8 Housing Choice Voucher (HCF) and public housing programs

Contact Info: 916 George St, Chester, IL 62233.....(618) 826-4314
 807 North Gardner St., Sparta, IL 62286.....(618) 443-3393

SENIORS/DISABLED

MACO Management Co., Inc.

Services: housing for individuals aged 62 years or older or who are disabled regardless of age and have low to moderate income

Contact Info: Main Office, 1008 E. Main St., Robinson, IL 62454(618) 544-8645
 Chesterton Manor Apartments: 1420 Court St., Chester, IL 62233(618) 826-2802
 Red Bud Apartments: 225 Lockwood Dr., Red Bud, IL 62278(618) 282-2778
 Red Bud Estates: 575 Country Club Rd., Red Bud, IL 62278(618) 282-4351
 710 West Market St., Red Bud, IL 62278.....(618) 282-4351
 Steeleville Apartments: 807 Lockwood Ct., Steeleville, IL 62288(618) 965-3676

SPECIAL NEEDS FOR INTELLECTUAL DISABILITY

ComWell – Community Integrated Living Arrangement (CILA) (Chester)

See ComWell under anchor agencies

Progressive Careers and Housing (CILA) Sparta Terrace

Services: 16 bed intermediate care center for adults with intellectual disabilities.

Contact Info: 1501 Melmar Dr., Sparta, IL 62286(618) 443-2122

Website: <https://www.phidd.org/>

HUMAN TRAFFICKING

***Healing Action Network, Inc.**

Services: supporting survivors of sex trafficking and sexual exploitation in the St. Louis region

Contact Info: P.O. Box 39429, St. Louis, MO 63139 (314) 833-4515

Website: <https://healingaction.org/>

***Restoration61**

Services: all services are free and include crisis intervention, one-on-one advocacy & case management clinical services, weekly groups and outreach.

Contact Info: (773) 550-7239

Website: <https://www.restoration61.org>

****National Human Trafficking Hotline**

Contact Info: (888) 373-7888

* Located outside of Randolph County but available to Randolph County residents

** Online & National Hotline numbers

INTERNET ASSISTANCE

**Lifeline HUD Resource

Services: makes communication services more affordable for low-income consumers by lowering the cost of phone or internet bills for HUD Residents

Contact info:(800) 234-9473

Website: <https://www.hudexchange.info/resource/5104/lifeline-fact-sheet/>

**USAC Affordable Connectivity Program

Services: the Affordable Connectivity Program (ACP) is a U.S. government program run by the Federal Communications Commission (FCC) to help low-income households pay for internet service and connected devices like a laptop or tablet. Likely eligible if household's income is below 200% of the Federal poverty line, or if you household member receives a government benefit like SNAP, Medicaid, SSI, WIC, Pell Grant, or Free and Reduced-Price Lunch.

Website: <https://affordableconnectivity.gov/>

LEGAL SERVICES

*Equip for Equality, Inc.

Services: legal representation and advocacy for persons with developmental, mental and physical disabilities, outreach and training, information and referral

Contact Info: 300 East Main St. Suite 18, Carbondale, IL 62901(618) 457-7930

Website: <https://www.equipforequality.org/>

*Land of Lincoln, Legal Aid

Services: providing free legal aid to families and individuals in need. Areas of law include: consumer law, family law, education law, elder law & disability rights, health & economic security, and housing law. Areas of law not covered include criminal cases (including traffic cases), personal injury, malpractice, or workers' compensation cases.

Contact Info: First Mid Illinois Bank Building, Third Floor, 509 South University Ave., Carbondale IL 62901(618) 457-7800

Website: <https://lincolnlegal.org/>

*SIU Carbondale Legal Clinic

Services: serving residents in southern Illinois. Our legal clinics offer students the opportunity to work with clinical faculty while representing clients through civil practice/elderly and juvenile justice clinics.

Contact Info: 115 Douglas Dr., Carbondale, IL 62901(618) 536-7711

Website: <https://law.siu.edu/academics/clinics/>

*Veterans Legal Assistance Program (VLAP) (SIU)

Services: providing legal assistance to veterans in southern Illinois who cannot afford or do not have access to legal representation in the appeals of claims for compensation of service connected disabilities, pension, survivor benefits and education benefits

Contact Info: 115 Douglas Dr., Carbondale, IL 62901(855) 452-3526 or (618) 453-8280

Website: <https://law.siu.edu/academics/clinics/>

LGBTQIA+ RESOURCES

*Metro East PRIDE

Services: links and information

Contact Info: PO Box 794, Belleville, IL 62222

Email: metroeastpride@gmail.com

* Located outside of Randolph County but available to Randolph County residents

** Online & National Hotline numbers

***PFLAG**

Services: dedicated to supporting, education and advocating for LGBTQ+ people and their families
Contact Info: 115 West B St., Belleville, IL 62220 (618) 977-5078
Website: <https://pflag.org/chapter/belleville/>

***Queer-Oriented Rural Resource Network (QORRN)**

Services: include mental health, adults questioning their sexuality/gender identity, marriage and couples counseling, sexual trauma/violence/rape, substance abuse/addiction, trans and gender-non-conforming, and youth services
Contact Info: 808 S. Main St., Ste. C, Columbia, IL 62236 (618) 604-5032
Website: <https://www.qorrn.com/>

***Rainbow Café LGBTQ Center**

Services: provides non-judgmental support and access to personal, community, spiritual, and health resources to LGBTQIA+ people in Southern Illinois. Rainbow Café is a welcoming, affirming environment for LGBTQIA+ people and their friends and families.
Contact Info: 118 N. Illinois Avenue, Carbondale, IL 62901 (618) 525-9922
Website: <https://www.rainbowcafe.org/> **Resource List:** <https://www.rainbowcafe.org/resources.html>

****The Trevor Project**

Services: provides 24/7 crisis intervention and suicide prevention for LGBTQ youth
Contact Info:text “Trevor” to (202) 304-1200
 or instant message through TrevorChat at: <https://www.thetrevorproject.org/get-help-now/>
Hours: Monday-Friday 2:00 p.m.-9:00 p.m.

LIBRARIES

Chester Public Library

Services: regular library services, e-library & FREE Wi-Fi internet access
Contact Info: 733 State St., Chester, IL 62233(618) 826-3711
Hours: Monday – Thursday 10:00 a.m.-6:00 p.m. & Friday - Saturday 9:00 a.m.-1:00 p.m.
Website: <https://www.chesterpubliclibrary.com/>

Coulterville Public Library

Services: regular library services, free computer & Wi-Fi use; fax & copying services
Contact Info: 103 South 4th St., Coulterville, IL 62237(618) 758-3013
Hours: Monday & Friday 10:00 a.m.-3:00 p.m., Tuesday & Thursday 1:00 p.m.- 6:00 p.m.
 & Saturday 10:00 a.m.-2:00 p.m., CLOSED Wednesday & Sunday
Website: <http://www.coultervillelibrary.weebly.com>

Evansville Public Library

Services: regular library services, free computer & Wi-Fi use, copying services, check out movies, e-books, Lego club and much more.
Contact Info: 602 Public St., Evansville, IL 62242(618) 853-4649
Hours: Tuesday & Thursday 11:00 a.m.-4:00 p.m. & Saturday 12:00 p.m.-5:00 p.m.
Website: <https://evansvillepubliclibrary.weebly.com/>

Marissa Public Library

Services: regular library services in addition to Coffee & Conversation, book clubs, painting class, Pinterest club and virtual story time.
Contact Info: 212 North Main St., Marissa, IL 62257(618) 295-2825
Hours: Monday, Tuesday, Wednesday & Friday 10:00 a.m.-5:00 p.m.
 Thursday 10:00 a.m.-7:00 p.m. CLOSED Saturday & Sunday
Website: <https://www.marissalibrary.org/>

* Located outside of Randolph County but available to Randolph County residents

** Online & National Hotline numbers

Prairie du Rocher Community Library

Services: regular library services and internet
Contact Info: 223 Market Street, Prairie du Rocher, IL 62277(618) 284-7323
Hours: Tuesday 5:00 p.m.-7:00 p.m., Wednesday 2:00 p.m.-4:00 p.m. & Saturday 10:00 a.m.-12:00 p.m.
Website: <https://visitprairiedurocher.com/membership-list/prairie-du-rocher-community.html>

Red Bud Public Library

Services: regular library services, free computer & Wi-Fi use, copying services, children & family programs, summer reading programs, access to newspapers and magazines, book clubs, puzzle exchange, use of back room & more
Contact Info: 925 South Main St., Red Bud, IL 62278(618) 282-2255
Hours: Monday-Thursday 12:00 p.m.-7:00 p.m.
 Friday & Saturday 9:00 a.m.-1:00 p.m.
Website: <https://redbudpubliclibrary.weebly.com/>

Sparta Public Library

Services: regular library services, story time and Kidz Club Zone, e-books, homework help, children's programs, kid's corner, young adult programs, Project Next Generation, youth resources, adult programs and more
Contact Info: 211 West Broadway St., Sparta, IL 62286(618) 443-5014
Hours: Monday, Tuesday & Thursday 12:00 p.m.-7:00 p.m.
 Wednesday & Friday 10:00 a.m.-5:00 p.m.; & Saturday 10:00 a.m.-4:00 p.m.
Website: <https://www.spartapubliclibrary.com/>

Steeleville Area Public Library

Services: regular library services, e-books, summer reading program, story hour, games and monthly calendar with special events such as Lego club, craft club, book club & more
Contact Info: 625 South Sparta, St., Steeleville, IL 62288(618) 965-9732
Hours: Monday-Friday 10:00 a.m.-6:00 p.m. & Saturday 10:00 a.m.-1:00 p.m.
Website: <https://www.steelevillelibrary.org/>

Tilden Public Library

Services: regular library services
Contact Info: 381 Butler St., Tilden, IL 62292(618) 587-1282
Hours: Monday & Thursday 2:00 p.m.-6:00 p.m.; Tuesday & Saturday 10:00 a.m.-2:00 p.m.
 CLOSED Sunday, Wednesday & Friday
Website: <https://www.sites.google.com/view/tildenlibrary>

LONG-TERM CARE & ASSISTED LIVING

Addington Place of Sparta

Contact Info: 211 North Market St., Sparta, IL 62286(618) 443-2600
Website: <https://addingtonplaceofsparta.seniorlivingnearme.com/>

Coulterville Rehabilitation and Health Care Center

Contact Info: 13138 State Route 13, Coulterville, IL 62237(618) 758-2256
Website: <https://coultervillebytutera.com/>

Garden Place Senior Living

Contact Info: 351 Lockwood Dr., Red Bud, IL 62278(618) 475-6194
Website: <https://www.compass-living.com/senior-living/il/red-bud/garden-place-red-bud/>

Randolph County Care Center

Contact Info: 312 West Belmont St., Sparta, IL 62286(618) 443-4351

* Located outside of Randolph County but available to Randolph County residents

** Online & National Hotline numbers

Website: <https://am.randolphco.org/index.php/gov-menu/appointed-officials/2015-12-04-02-46-19/90-main-category/government/appointed-officials/carecenter-main>

The Manor at Craig Farms

Contact Info: 3030 State St., Chester, IL 62233(618) 826-1400
Website: <https://manoratcraigfarms.com/>

Three Springs Senior Living & Rehabilitation

Contact Info: 161 Three Springs Rd., Chester, IL 62233(618) 664-1622
Website: <https://wlcfirm.com/three-springs-senior-living-and-rehabilitation.php>

MEDICAL

AFTERCARE & THERAPY PROGRAMS

Memorial Hospital Therapy & Sports Rehab Center

Services: after graduating from therapy, patients may opt to continue using the facility to continue their exercises on an independent basis
Contact Info: 833 Lehmen Dr., Chester, IL 62233(618) 826-4588
Website: <https://www.mhchester.com/rehab-center>

Red Bud Regional Hospital

Services: provide treatment for arthritis, back and neck pain, bladder health, joint replacement, fitness, osteoporosis, overuse injuries, sound production and swallowing, shoulder pain, sports injuries, sprains, strains, and fractures, stroke and work injuries.
Contact Info: 325 Spring St., Red Bud, IL 62278(618) 282-5172
Hours: vary
Website: <https://redbudregional.com/>

The Center, After Care – Physical & Sports Therapy (Sparta Community Hospital)

Services: available for all outpatients, after completing their treatment plan, to continue on an independent basis with a full line of state of the art equipment
Contact Info: 1300 North Market, Sparta, IL 62286(618) 443-6966
Website: <https://www.spartahospital.com/locations/physical-therapy/>

BREAST HEALTH

Red Bud Regional Hospital

Services: offering 3D mammography for all women, especially those with young and/or dense breasts, BRCA mutation, family history of breast cancer, prior breast biopsy and/or radiation to the chest
Contact Info: 325 Spring St., Red Bud, IL 62278(618) 282-4900
Website: <https://redbudregional.com/>

CARDIOLOGY

Cardiac Pulmonary Rehab Center (Memorial Hospital of Chester)

Services: after an event or diagnosis, your provider can refer you, with an order, to the CPRC. An assessment is completed, and an individualized treatment plan is created. Rehabilitation programs at the center provide comprehensive care to patients with heart and lung conditions. Through the program, individuals are given a structured program that includes education, counseling, and exercise to strengthen their lungs and heart. Participants in the program have access to various tools and a full support system to help them recover. The CPRC training on physical activity, medications, healthy living, stress management, and smoking cessation.
Contact Info: 1900 State Street, Chester, IL 62233(618) 826-4581 ext. 1151
Website: <https://www.mhchester.com/cprehab>

* Located outside of Randolph County but available to Randolph County residents
 ** Online & National Hotline numbers

Red Bud Regional Hospital

Services: include EKGs, stress testing, vascular ultrasound, nuclear cardiology, holter monitoring, Echocardiograms and clinic consultations
Contact Info: 325 Spring St., Red Bud, IL 62278(618) 939-4200
Website: <https://redbudregional.com/>

Sparta Cardiology Office (Sparta Community Hospital)

Services: visiting cardiologist. Physicians at Broadway Plaza Specialty Clinic are independent, contracted providers and are not employees or agents of Sparta Community Hospital District
Contact Info: 205 South Burns Avenue, Sparta, IL 62286 (618) 443-IDOC (1362)
Hours: vary
Website: <https://www.spartahospital.com/locations/sparta-cardiology-office/>

CARE MANAGEMENT PROGRAM

Care Management Program (Sparta Community Hospital)

Services: enables the patient’s primary care clinician to provide them with better access to comprehensive, coordinated, continuous and proactive evidence based care
Contact Info: 818 E. Broadway, Sparta, IL 62286.....(618) 443-2177
Website: <https://www.spartahospital.com/services/care-management-program/>

CLINICS, PHYSICIAN’S OFFICES & WELLNESS CARE

Chester Clinic (Memorial Hospital of Chester)

Services: family health care newborn through geriatrics, same day appointments, wellness visits, family planning, school & sports physicals, nursing home care, minor in-office procedures, allergy and injection therapy, laboratory, immunizations (Vaccines For Children – VFC provider), DOT physical exams
Contact Info: 2319 Old Plank Rd., Chester, IL 62233(618) 826-2388
Hours: Monday & Friday 8:00 a.m.-5:00 p.m.
 Tuesday & Thursday 7:00 a.m.-5:00 p.m.
Website: <https://www.mhchester.com/clinics>

Coulterville Medical Clinic (Sparta Community Hospital)

Contact Info: 203 East Grant St., Coulterville, IL 62237(618) 758-2331
Hours: Monday 8:30 a.m.-5:00 p.m.
 Tuesday-Friday 8:00 a.m.-5:00 p.m.
Website: <https://www.spartahospital.com/locations/>

Family Health Centre (Sparta Community Hospital)

Services: primary care & family medicine providing healthcare services to patients of all ages; treat minor urgent conditions such as injuries, infections, flu & sprains; manage chronic conditions such as diabetes & high blood pressure in addition to delivering preventative care & wellness guidance. Pediatrician.
Contact Info: 207 S. Burns Ave., Sparta, IL 62286(618) 443-3084
Hours: Monday-Thursday 7:30 a.m.-5:30 p.m.; Friday 8:30 a.m.-5:30 p.m.
Website: <https://www.spartahospital.com/locations/family-health-centre/>

North Campus Healthcare Clinic (Sparta Community Hospital)

Services: primary care and family medicine providing healthcare services to patients of all ages; treat minor urgent conditions such as injuries, infections, flu and sprains; and also manage chronic conditions such as diabetes and high blood pressure in addition to delivering preventative care and wellness guidance
Contact Info: 1300 North Market St., Sparta, IL 62286.....(618) 443-4138
Hours: Monday 8:30 a.m.-5:00 p.m.; Tuesday-Friday 8:30 a.m.-7:00 p.m.; Saturday 9:00 a.m.-4:00 p.m.
Website: <https://www.spartahospital.com/locations/north-campus-healthcare-clinics/>

Red Bud Health Clinic (Red Bud Regional Hospital)

Services: family medicine, adult medicine, gastroenterology, general surgery, wound care and more.
Contact Info: RBRH Second Floor, 325 Spring St., Red Bud, IL 62278(618) 282-7373

* Located outside of Randolph County but available to Randolph County residents
 ** Online & National Hotline numbers

Hours: Monday-Friday 8:00 a.m.-5:00 p.m.
Website: <https://redbudregional.com/red-bud-health-clinic/>

SIHF Healthcare

Contact Info: 824 Locust, Red Bud, IL 62278(618) 282-6656
Hours: Monday, Tuesday, Thursday & Friday 8:30 a.m.-5:00 p.m.
 Wednesday 8:30 a.m.-3:00 p.m.
Website: <https://www.sihf.org/health-center/red-bud>

Sparta Medical Office (Sparta Community Hospital)

Services: primary care and family medicine providing healthcare services to patients of all ages; treat minor urgent conditions such as injuries, infections, flu and sprains; and also manage chronic conditions such as diabetes and high blood pressure in addition to delivering preventative care and wellness guidance
Contact Info: 215 South Burns Ave., Sparta, IL 62286(618) 443-2297
Hours: Monday 8:30 a.m.-7:00 p.m.; Tuesday-Friday 8:30 a.m.-5:00 p.m.
Website: <https://www.spartahospital.com/locations/sparta-medical-office/>

Steeleville Clinic (Sparta Community Hospital)

Services: primary care and family medicine providing healthcare services to patients of all ages; treat minor urgent conditions such as injuries, infections, flu and sprains; and also manage chronic conditions such as diabetes and high blood pressure in addition to delivering preventative care and wellness guidance
Contact Info: #9 Westwood Dr., Steeleville, IL 62288(618) 965-3466
Hours: Monday & Thursday 8:30 a.m.-7:00 p.m.; Tuesday, Wednesday & Friday 8:30 a.m.-5:00 p.m.
Website: <https://www.spartahospital.com/locations/steeleville-clinic/>

Steeleville Family Practice (Memorial Hospital of Chester)

Services: family health care newborn through geriatrics, same day appointments, wellness visits, family planning, school & sports physicals, nursing home care, minor in-office procedures, allergy and injection therapy, laboratory, immunizations and DOT physical exams
Contact Info: 602 West Shawneetown Trail, Steeleville, IL 62288(618) 965-3382
Hours: Monday & Thursday 8:30 a.m.-7:00 p.m.; Tuesday, Wednesday & Friday 8:30 a.m.-5:00 p.m.
Website: <https://www.mhchester.com/clinics>

***Shawnee Health Services - Migrant/Farmworker Health Center**

Services: include medical, dental, OB/GYN, nutrition, counseling, social services, lab testing & pharmacy provided to migrant/seasonal workers at reduced fees or arranged plan; Medicare & Medicaid accepted; bilingual
Contact Info: #7 South Hospital Dr., Murphysboro, IL 62966 (618) 519-9200 opción nueve para español
Website: <https://www.shawneehealth.com/services/farmworker-health-program/>

CONVENIENT CARE

Convenient Care (Memorial Hospital of Chester)

Contact Info: 1900 State St., Chester, IL 62233(618) 826-4581
Hours: Sunday-Saturday 8:00 a.m.-8:00 p.m.
Website: <https://www.mhchester.com/convenient-care>

Convenient Care (Sparta Community Hospital)

Contact Info: 1300 North Market, Sparta, IL 62286(618) 443-2177
Hours: Monday-Friday 9:00 a.m.-7:00 p.m., Saturday 9:00 a.m.-4:00 p.m., Sunday 9:00 a.m.-2:00 p.m.
Website: <https://www.spartahospital.com/services/convenient-care/>

Walk-In Clinic Red Bud Health Clinic (Red Bud Regional Hospital)

Contact Info: 2nd Floor, Red Bud Regional Hospital, 325 Spring St., Red Bud, IL 62278
(618) 282-7373
Hours: Monday-Friday 8:00 a.m.-7:00 p.m.

* Located outside of Randolph County but available to Randolph County residents

** Online & National Hotline numbers

Saturday 8:00 a.m.-4:00 p.m. CLOSED Sunday
Website: <https://redbudregional.com/red-bud-walk-in-clinic/>

COUMADIN MANAGEMENT

Coumadin Clinic (Sparta Community Hospital)

Services: a clinic pharmacist, working with your physician, will monitor and manage medication that prevents blood clots, provide individualized care and education, and make any necessary medication adjustments. Please contact your doctor’s office to obtain a referral.
Contact Info: 818 East Broadway St., Sparta, IL 62286(618) 443-2177
Hours: Tuesday 9:00 a.m.-12:00 p.m.
Website: <https://www.spartahospital.com/services/coumadin-clinic/>

DIALYSIS SERVICES

DaVita Dialysis

Contact Info: 1500 East Market St., Lot 4, Red Bud, IL 62278(800) 424-6589
Website: <https://www.davita.com/>

Fresenius Kidney Care

Contact Info: 102 Memorial Dr., Chester, IL 62233(800) 881-5101
Website: <https://www.freseniuskidneycare.com/dialysis-centers/illinois/1885>

MOBILE HEALTHCARE

Mobile Health Clinics (Sparta Community Hospital)

Services: scheduled and walk-in primary care and family medicine providing healthcare services to patients of all ages. Treat minor urgent conditions such as injuries, infections, flu and sprains. Also, manage chronic conditions such as diabetes and high blood pressure and deliver preventative care and wellness guidance.
Contact Info: (618) 443-IDOC (1362)
Hours: Please visit website for current schedule
Website: <https://www.spartahospital.com/services/mobile-health-clinic/>

RESPIRATORY/PULMONARY

Cardiac Pulmonary Rehab Center (Memorial Hospital of Chester)

Services: after an event or diagnosis, your provider can refer you, with an order, to the CPRC. An assessment is completed and an individualized treatment plan is created. Rehabilitation programs at the center provide comprehensive care to patients with heart and lung conditions. Through the program, individuals are given a structured program that includes education, counseling, and exercise to strengthen their lungs and heart. Participants in the program have access to various tools and a full support system to help them recover. The CPRC training on physical activity, medications, healthy living, stress management, and smoking cessation.
Contact Info: 1900 State Street, Chester, IL 62233(618) 826-4581 ext. 1151
Website: <https://www.mhchester.com/cprehab>

Cardiopulmonary Rehabilitation (Sparta Community Hospital)

Services: medically supervised comprehensive program designed to improve the health and wellbeing of individuals with heart or lung conditions. Includes smoking cessation education.
Contact Info: 205 South Burns Avenue, Sparta, IL 62286(618) 443-2177 ext. 1336
Website: <https://www.spartahospital.com/services/pulmonary/>

Lung Screening Program (Memorial Hospital of Chester)

Services: The Lung Cancer Screening Program is covered by most private insurance plans, Medicare and Medicaid. Patients must have a shared decision-making visit with a medical provider prior to their lung cancer screening test. Check with your provider, or call our Nurse Navigator at the phone number below for assistance.

* Located outside of Randolph County but available to Randolph County residents
 ** Online & National Hotline numbers

Contact Info: 1900 State Street, Chester, IL 62233 855-399-LUNG (5864)
Website: <https://www.mhchester.com/lung-screening>

Red Bud Regional Hospital

Services: caring for patients with COPD, bronchitis, emphysema, asthma, lung cancer, smoking cessation, pneumonia and Pulmonary Function Test.
Contact Info: 325 Spring St., Red Bud, IL 62278(618) 282-7373
Website: <https://redbudregional.com/>

***Black Lung Program (A program of Shawnee Health Service)**

Services: specialized in assisting former coal miners and/or widows of coal miners with their black lung benefits claims, medical diagnosis and treatment of black lung disease. Services are free.
Contact Info: 109 California St., Cartersville, IL 62918 (618) 519-9200
Hours: Monday-Friday 8:00am-4:00pm
Outreach Areas: Carbondale, Cartersville, Marion & Murphysboro
Website: <https://www.shawneehealth.com/services/black-lung-program/>

SKILLED CARE

Swing Bed Program (Memorial Hospital of Chester)

Services: 24-hour skilled nursing care, physician services, physical therapy, speech/language therapy, occupational therapy, certified nurse assistants, licensed social worker, post-surgical care, IV therapies, diabetic management, enteral feedings, pain management, pharmacy services and wound management
Contact Info: Memorial Hospital, 1900 State St., Chester, IL 62233(618) 826-4581
Website: <https://www.mhchester.com/swing-bed-program>

Swing Bed Program (Sparta Community Hospital)

Services: 24/7 acute care nurses with in-house physicians and respiratory therapist, physical, occupational and speech therapy with individual plan of care
Contact Info: 818 East Broadway St., Sparta, IL 62286(618) 443-2177 ext.1409
Website: <https://www.spartahospital.com/services/swing-bed-program/>

SLEEP LAB

Memorial Hospital of Chester

Services: provide sleep diagnostic testing and treatment of sleep disorders, home sleep studies.
Contact Info: 1900 State St., Chester, IL 62233(618) 826-4581
Website: <https://www.mhchester.com/sleep-disorder-treatment-sleep-lab>

Sparta Community Hospital

Services: provide overnight exams to monitor sleep and identify disruptions to sleep patterns such as sleep apnea, hyperpnoea, excessive snoring, insomnia, narcolepsy and heart rhythm problems
Contact Info: 818 E. Broadway Street, Sparta, IL 62286(618) 443-2177
Website: <https://www.spartahospital.com/services/sleep-studies/>

SPECIALTY CLINIC

Broadway Plaza Specialty Clinic (Sparta Community Hospital)

Services: visiting specialty providers including oncology, ENT, and OB/GYN. Physicians at Broadway Plaza Specialty Clinic are independent, contracted providers and are not employees or agents of Sparta Community Hospital District
Contact Info: Broadway Plaza, Suite 1., Sparta, IL 62286 (618) 443-IDOC (1362)
Hours: Monday 8:30 a.m.-5:00 p.m.; Tuesday-Friday 8:30 a.m.-7:00 p.m.; Saturday 9:00 a.m.-4:00 p.m.
Website: <https://www.spartahospital.com/specialty-clinic/>

* Located outside of Randolph County but available to Randolph County residents
 ** Online & National Hotline numbers

Memorial Hospital Specialty Clinic (Memorial Hospital)

Services: specialty providers including audiology, cardiology, gastroenterology, nephrology, oncology & hematology, orthopedics, otolaryngology (ENT), pain management, podiatry, urology, and wound clinic.
Contact Info: Memorial Hospital, 1900 State Street, Chester, IL 62233 (618) 826-4581 (1366)
Hours: Providers schedules may vary. Monday-Friday 8:00am-5:00pm
Website: <https://www.mhchester.com/providers>

North Campus Healthcare Specialty Clinic (Sparta Community Hospital)

Services: visiting specialty providers including gastroenterology, orthopedics, pain management, podiatry, pulmonology, rheumatology, urology, and neurology. Physicians at North Campus Healthcare Specialty Clinic are independent, contracted providers and are not employees or agents of Sparta Community Hospital District.
Contact Info: 1300 North Market St., Sparta, IL 62286..... (618) 443-IDOC (1362)
Website: <https://www.spartahospital.com/locations/north-campus-healthcare--specialty-clinics/>

Red Bud Regional Hospital

Services: specialty providers including gastroenterology, infusion center services, orthopedics, podiatry, pulmonary, senior emotional health, skilled nursing care unit and wound care.
Contact Info: 325 Spring St., Red Bud, IL 62278(618) 282-7373
Website: <https://redbudregional.com/>

MEDICAL INSURANCE

****Affordable Care Act**

Website: <https://getcovered.illinois.gov/>

****Healthcare for Kids**

All Kids Hotline(866) ALL-KIDS or (866) 255-5437
 TTY: (877) 204-1012
Website: <https://hfs.illinois.gov/medicalprograms/allkids.html>

****Illinois Department of Insurance, Office of Consumer Health Insurance**

Services: file a complaint if you are having a problem with your state-regulated health plan
Contact Info:(866) 445-5364
Website: <https://idoi.illinois.gov/>

****Medicaid**

Services: federal and state programs that help with medical costs for people with limited income
Contact Info:(800) 843-6154
Website: <https://abe.illinois.gov/abe/access/>
<https://www.illinois.gov/hfs/MedicalClients/Pages/AbeBenefits.aspx>

****Medicare**

Services: federal program that provides health coverage for people over 65 or under 65 with a disability
Contact Info:(800) MEDICARE
Website: <https://www.medicare.gov/>

MENTAL HEALTH

ComWell

See information under Anchor Agencies

* Located outside of Randolph County but available to Randolph County residents
 ** Online & National Hotline numbers

***Amygdala**

(Accepts Medicaid IL)

Services: Parent-Child Interaction Therapy (PCIT), screening and diagnosis. PCIT is an evidence-based therapy for young children ages 2-8 and their parents/caregivers. PCIT provides parents with the resources, skills, and knowledge to reduce child externalizing behaviors (i.e. ADHD, temper tantrums, talking back, depression, defiance, shouting, etc.) and parents learn in-the-moment calm down skills so they can prevent problem behaviors when the therapist leaves. Therapy highlights:

- Kids 2-8 with diagnosed or undiagnosed externalizing behaviors.
- Kiddos can be older than 8 if diagnosed with Autism.
- Therapy lasts between 12-24 weeks
- Remote services are available.
- Parents/Caregivers are involved in weekly therapy sessions.
- Weekly behavioral data is collected & parents see child behavioral graphs.

Contact Info: 110 N. High Street, Suite 3, Belleville, IL 62233.....(314) 518-7967

Email: info@amygdalaco.com

Website: <https://www.amygdalaco.com/>

***Behavioral Health Crisis Center**

Services: the Behavioral Health Crisis Center is a partnership between Gibson Center for Behavioral Change and the Community Counseling Center. The BHCC provides a 24/7 no-wrong-door approach for those experiencing a behavioral health crisis.

- Crisis stabilization
- 24/7 access
- Walk-ins accepted
- Psychiatric care and assessment
- Medication-assisted treatment
- Brief supportive counseling
- Peer support services
- Referral and linkage to community resources
- ZERO COST MENTAL HEALTHCARE

Contact Info: 1112 Linden St., Cape Girardeau, MO 63703(573) 803-4155

Website: <https://semo-bhcc.com/>

***Centerstone**

See information under Anchor Agencies

***Chestnut Health Services**

Services: include a variety of mental health treatment options for children, youth and adults as well as addiction treatment (including gambling) for adolescents and adults.

Contact Info: 12 North 64th St., Belleville, IL 62223(888) 924-3786 or (618) 397-0900

Website: <https://www.chestnut.org/>

***Christian Hospital Recovery Center**

(Private insurance and Medicare)

Services: diagnosis and treatment for alcoholism, anxiety disorders, bipolar disorders, depression, drug abuse and Schizophrenia.

Contact Info: 11133 Dunn Road, St. Louis, MO 63136.....(314) 653-5000

Website: <https://www.christianhospital.org/Medical-Services/Mental-Health>

***Comprehensive Behavioral Health Center**

(Discounts available based on family size & income)

Services: provide quality individualized essential services for people in need of emotional, rehabilitative and social support, on a 24-hour basis, in the least restrictive environment

- **Mental Health Services:** crisis, Living Room, Drop In Center, child & adolescents, Adult Re-Deploy, Project for Assistance in Transition from Homelessness (PATH), and residential programs

* Located outside of Randolph County but available to Randolph County residents

** Online & National Hotline numbers

- **Outpatient Treatment**
- **Methadone Clinic**
- **Parenting Teens**

Contact Info: 505 South 8th St., East St. Louis, IL 62201.....(618) 482-7330
Website: <https://cbhc1.org/>

***Egyptian Behavioral Health**

Services: youth and adult mental health, substance use prevention and recovery outpatient services
Contact Info: 1412 US Hwy 45 N., Eldorado, IL 62930.....(618) 273-3326
Website: <https://egyptian.org/>

***Eldorado Rural Health**

Services: outpatient behavioral health and psychiatric services
Contact Info: 1401 US Hwy 45 N., Eldorado, IL 62930.....(618) 273-2951
Website: <https://www.crhpc.org/behavioral-health-cb31>

***Farm Family Resource Initiative**

Services: the Southern Illinois University School of Medicine Center for Rural Health and Social Service Development (CRHSSD) is leading the effort to build a network of support and resources for Illinois farm families. The purpose of the initiative is to provide a range of resources including a helpline to assist with farmer and farm-related issues that include mental and physical health needs. The initiative offers ongoing outreach, education and training to rural clients to improve the health and safety of farm families.
Contact Info:24/7 1-833-FARM-SOS (1-833-327-6767)
Website: <https://www.siumed.edu/farm>

***Gateway Foundation**

(Medicaid & private insurance)
Services: primarily group counseling with some individual & family counseling; residential treatment for men, women, girls & boys; men’s co-occurring program; outpatient counseling for age 12+; some transportation available for OP day group M-F; evening group available M-TH; risk education, DUI evaluations; After school OP program for youth age 12-18 M-F; MAT available; NAR NON group for families every other Monday night
Contact Info: 1080 East Park St., Carbondale, IL 62901 (855) 944-3805
 1 Bronze Pointe North, Swansea, IL 62226(618) 234-9002
Website: <https://www.gatewayfoundation.org/>

***Hoyleton Youth & Family Services**

(Medicaid & other insurance)
Services: include “Become a Foster Parent,” professional counseling services for every need, Therapeutic Residential Care to support youth with a range of developmental delays, and Puentes de Esperanza – a place for Hispanic members to find critical resources.
Contact Info: Hoyleton Fairview Heights Campus & Puentes De Esperanza
 8 Executive Dr., Ste. 200, Fairview Heights, IL 62208(618) 688-4727
 Lehre Haus, 300 N. Church St., Belleville, IL 62220(618) 416-7337
 Hagar House, 6015 & 6017 W. A St., Belleville, IL 62223(618) 416-7670
 Hoyleton Children’s Home, 350 N. Main St., Hoyleton, IL 62803.....(618) 493-7382
 Marion Office, 930 W. Cherry St., Marion, IL 62959(618) 315-2857
 New location coming soon to Chester
Website: <https://hoyleton.org/>

***Human Support Services**

(Private insurance, self-pay, Medicaid & Medicare)
Services: provide counseling for mental health, substance use and developmentally disabled youth, provide crisis services, dementia caregiver educational classes, CILA residential housing for adults with developmental disabilities and mental health transitional housing.

* Located outside of Randolph County but available to Randolph County residents
 ** Online & National Hotline numbers

Contact Info: 988 Illinois 3, Waterloo, IL 62298(618) 939-4444
Website: <https://www.hss1.org/>

***Lincoln Prairie Behavioral Health Center**

(No cost assessment)

Services: standalone facility providing psychiatric treatment to children and adolescents ages three-seventeen years

Contact Info: 5230 South Sixth Street Frontage Rd E., Springfield, IL 62703(217) 585-1180

Website: <https://lincolnpairiebhc.com/>

***NAMI Southwestern Illinois**

See information under Anchor Agencies

***SIH Harrisburg Medical Center**

Services: 30 bed inpatient psychiatric unit, behavioral health services at Emergency Departments for a four-hospital system, outpatient psychiatric services at 5 primary care clinics in southern IL, intensive outpatient program at St. Joseph Memorial Hospital, psychiatric services at nursing home, consultation & liaison service at four hospital system and telemedicine services.

Contact Info: 100 Warren Tuttle Dr., Harrisburg, IL 62946(618) 253-7671

Website: <https://www.sih.net/services/behavioral-health>

***Touquette Regional Hospital Centerville**

(Private insurance)

Services: offer outpatient and inpatient care in a warm welcoming environment combined with dedicated clinical staff and evidence-based best practices

Contact Info: 5900 Bond Ave., Centerville, IL 62207(618) 332-3060

Website: <https://touquette.org/services/behavioral-health-and-wellness>

****Illinois WarmLine**

Services: a non-crisis peer support line for people living with mental illness

Contact Info:(866) 359-7953 or (866) 880-4459

Hours: Monday-Friday 8:00 a.m.-5:00 p.m.

****The Trevor Project**

Services: provides 24/7 crisis intervention and suicide prevention for LGBTQ youth

Contact Info:text “Trevor” to (202) 304-1200

or instant message through TrevorChat at: <https://www.thetrevorproject.org/get-help-now/>

Hours: Monday-Friday 2:00 p.m.-9:00 p.m.

PHARMACIES & DRUG TAKE BACK PROGRAMS

PHARMACIES

Kell Pharmacy, Inc.

Contact Info: 1375 South Main St., Red Bud, IL 62278(618) 282-2870

Memorial Community Pharmacy

Contact Info: 1900 State Street, Chester, IL 62233(618) 826-6134

Moody Health Mart Pharmacy

Contact Info: 109 East Broadway St., Sparta, IL 62286(618) 443-2715

Red Bud Pharmacy

Contact Info: 1375 S. Main St., Red Bud, IL 62278(618) 282-2870

* Located outside of Randolph County but available to Randolph County residents

** Online & National Hotline numbers

Tony’s MediCenter Pharmacy

Contact Info: 324 West Broadway St., Steeleville, IL 62288.....(618) 965-3511

Victor’s MediCenter Pharmacy

Contact Info: 2323 Old Plank Rd., Chester, IL 62233.....(618) 826-2511

Wal-Mart (Sparta)

Contact Info: 1410 North Market St., Sparta, IL 62286.....(618) 443-2436

Wal-Mart (Chester)

Contact Info: 2206 IL-150, Chester, IL 62233.....(618) 826-4898

****Illinois Department on Aging**

Pharmaceutical Assistance Program.....(800) 252-8966

DRUG TAKE BACK PROGRAMS

Chester Police Department

(Medication drop-off 24/7)

Contact Info: 1330 Swanwick St., Chester, IL 62233.....(618) 826-5454

Memorial Community Pharmacy

(Medication drop-off; no liquids or sharps)

Contact Info: 1900 State Street, Chester, IL 62233.....(618) 826-6134

Moody Pharmacy

(Medication drop-off; no liquids or sharps)

Contact Info: 109 East Broadway St., Sparta, IL 62286(618) 443-2715

Red Bud Police Department

(Medication drop-off 24/7)

Contact Info: 200 East Market St., Red Bud, IL 62278(618) 282-2363

Sparta Police Department

(Medication drop-off 24/7)

Contact Info: 114 West Jackson St., Sparta, IL 62286(618) 443-2917

Steeleville Police Department

(Medication drop-off 24/7)

Contact Info: 107 West Broadway St., Steeleville, IL 62288.....(618) 965-3134

PHYSICAL ACTIVITY

3 Nails Health & Fitness

Contact Info: 700 West Shawneetown Trail, Steeleville, IL 62288(618) 965-2242

Design Fitness

Contact Info: 250 Kennedy Drive, Red Bud, IL 62278(618) 304-9180

Website: <http://www.design-fitness.com/>

* Located outside of Randolph County but available to Randolph County residents

** Online & National Hotline numbers

Southside Strength & Conditioning, LLC

Contact Info: 1200 South Main St., Red Bud, IL 62278(618) 444-9250
Website: <https://www.southsidestrengthconditioning.com/contact>

The Center

Contact Info: The North Campus, 1300 North Market St., Sparta, IL 62286(618) 443-6966

Uptown Fitness Center

Contact Info: 171 West Broadway St., Sparta, IL 62286(618) 449-2165

Vasquez’s Fitness Center

Contact Info: 2513 State St., Chester, IL 62233(618) 826-5449

YMCA

Contact Info: 130 South Oak St., Red Bud, IL 62278(618) 282-9622
Website: <https://gwrymca.org/locations/randolph-county-ymca>

POISON CONTROL

****Illinois Poison Control Center**

Contact Info:(800) 222-1222

POLICE DEPARTMENTS

Chester Police Department

Contact Info: 1330 Swanwick St., Chester, IL 62233(618) 826-5454

Randolph County Sheriff’s Department

Contact Info: 200 West Buena Vista St., Chester, IL 62233(618) 826-5484

Red Bud Police Department

Contact Info: 200 East Market St., Red Bud, IL 62278(618) 282-2363

Sparta Police Department

Contact Info: 114 West Jackson St., Sparta, IL 62286(618) 443-4331

Steeleville Police Department

Contact Info: 107 West Broadway St., Steeleville, IL 62288(618) 965-3134

PREGNANCY

Caritas Family Solutions

Services: private domestic adoption program, pregnancy options counseling, three types of foster care, intact family services, Fontebella maternity home, parenting classes, St. John Bosco Children’s Center, community integrated living arrangements, anger management, etc.

Contact Info: 1805 N. Market, Sparta, IL 62286(618) 708-3490
 900 Royal Heights Rd., Suite 2150, Belleville, IL 62226(618) 394-5900
 10286 Fleming Road, Carterville, IL 62918(618) 985-2000

Website: <https://caritasfamilysolutions.org/>

* Located outside of Randolph County but available to Randolph County residents

** Online & National Hotline numbers

Life Network of Southern Illinois

(All services are free and confidential)

Services: pregnancy testing, limited ultrasound, limited STI and treatment, pregnancy options counseling, adoption education, parenting & life skills classes, childbirth, newborn care and breastfeeding classes, baby resources, dad’s mentoring programs/resources, abortion recovery program, community/medical resources, abstinence outreach education and professional counseling

Contact Info: 324 N. Main Street, Red Bud, IL 62278.....(618) 282-4225

Hours: Monday, Tuesday & Thursday, 9:00 a.m.-3:00 p.m.

Website: <https://www.mylifenet.org/>

Prenatal Class (Memorial Hospital of Chester)

Services: free classes offered four times a year on Saturdays from 8:00 a.m.-12:00 p.m.

Contact Info: 1900 State St., Chester, IL 62233(618) 826-4581 ext. 1223

Website: <https://www.mhchester.com/calendar-of-events>

Randolph County Birth to Three program

Services: home visits, lap-sits, play groups, parent encounters, family trips, free developmental screening, and resources for families and expecting mothers

Contact Info: (618) 826-2354

Randolph County Health Department

See information under Anchor Agencies

Sparta Pregnancy Care Center

Services: non-profit ministry informing, educating, aiding and assisting pregnant women in the positive alternatives to abortion

Contact Info: 121 North Vine St., Sparta, IL 62286.....(618) 443-4935

Website: <https://spartapregnancycenter.org/>

***Charity Home Ministries**

Services: providing safe, stable and appropriate transitional housing, education, mentoring and resource connections to pregnant and parenting teens

Contact Info: P.O. Box 23426, Belleville, IL 62221(618) 300-0771

Website: <https://charitihome.org>

***Centerstone**

See information under Anchor agencies

***Hager House – Hoyleton FS**

Services: expecting/parenting mother program is a transitional living program for young women ages 17-21 who are under DCFS guardianship

Contact Info: 6015 W. A Street, Belleville, IL 62223(618) 416-7670

***Lutheran Child and Family Services of Illinois**

(Sliding fee discount; insurance not accepted)

Services include:

- Adoption: assisting you through every step of your adoption journey
- Birth Parent Services: providing expectant mothers and fathers with compassionate, respectful and confidential assistance as you consider your child’s future as well as your own.
- Counseling: providing trauma-informed counseling to assist individuals in leading healthier lives
- Foster Care: helping children who have experienced trauma to feel safe, build a future and return to family.

Contact Info: 711 Insight Avenue, O’Fallon, IL 62269(618) 234-8904

Website: <http://www.lcfs.org/>

* Located outside of Randolph County but available to Randolph County residents

** Online & National Hotline numbers

***Lutheran Social Services of Illinois**

Services: LSSI provides a variety of services to include foster care & family support, prisoner & family ministry, post-adoption, mental health, alcohol/drug treatment, intellectual/developmental disabilities; affordable housing & home care for seniors; and youth services. Not all services are provided at all locations. For more information, contact your local office.

Contact Info: Marion Children’s Program: 1616 W. Main St., Marion, IL 62959(618) 997-9196
 Marion PFM:102 E. DeYoung St., Marion, IL 62959(618) 997-9076
 East St. Louis PFM:1919 State St., East St. Louis, IL 62205.....(618) 900-1918

Website: <https://www.lssi.org/>

***Planned Parenthood**

Services: abortion, birth control, cancer, emergency contraception, gender identity, health and wellness, pregnancy, sexually transmitted infections (STDs), sex and relationships, sexual orientation, etc.

Contact Info: 317 Salem Place, Fairview Heights, IL 62208(618) 277-6668
 200 North Emerald Lane, Carbondale, IL 62901(800) 230-7526

Website: <https://www.plannedparenthood.org/>

PRISON & JAIL SERVICES

ComWell

See information under Anchor Agencies

***Illinois Department of Corrections**

Services: provide a continuum of service for those committed to the Department of Corrections from the point of incarceration to discharge from parole.

Website: <https://idoc.illinois.gov/programs.html>

***Law and Grace Ministries**

Services: a free ministry of Faith Baptist Church, serving the local criminal justice system to include prison/jail chaplains, law enforcement chaplains, helping parolees and families with transition assistance, a provision pantry, bus passes and prescription copays. Provide counseling services to include anger management, substance use, domestic violence prevention, and general family assistance counseling

Contact Info: 413 E. Main St., Belleville, IL 62220(618) 235-6977

Email: lawandgracebelleville@gmail.com

***Lutheran Social Services of Illinois**

Services: prisoner & family ministry serves those who are incarcerated and their families as well as individuals who have returned from prison to their communities

Contact Info:

1919 State Street, East St. Louis, IL 62205(618) 900-1918

102 E. DeYoung, Marion, IL 62959(618) 997-9076

Website: <https://www.lssi.org/>

***Treatment Alternatives for Safe Communities (TASC)**

Services: provide clinical assessments, case management and recovery support for thousands of justice-involved adults and youth

Website: <https://www.centerforhealthandjustice.org/>

* Located outside of Randolph County but available to Randolph County residents

** Online & National Hotline numbers

RECREATION

BOWLING

American Legion Bowling

Contact Info: 305 South Chester St., Steeleville, IL 62288.....(618) 965-3932

Blossom City Bowl

Contact Info: 1019 Veterans St., Red Bud, IL 62278.....(618) 282-7289

PARKS & MISCELLANEOUS

Cohen Complex

Activities: baseball and softball diamonds, concessions, walking/exercise path with fitness stations, tennis courts, multi-purpose field (soccer), parking and picnic area, pickle ball courts.

Contact Info: 3401-3545 Bodes Ln., Chester, IL 62233

Cole Memorial Park

Activities: disc golf course (new for 2021) multi-purpose fields, shelter houses, play areas and a nature trail

Contact Info: Opdyke Street, Chester, IL 62233

Fort de Chartres

Activities: National Historic Landmark with picnic shelters and grills

Contact Info: 1350 State Rte 155, Prairie du Rocher, IL 62277(618) 284-7230

Website: <http://www.fortdechartres.us/>

Fort Kaskaskia State Park

Activities: historic site consists of four major sections: the remains of Fort Kaskaskia, Garrison Hill Cemetery, the Mississippi River overlook, picnic & play area, and large campground

Contact Info: 14372 Park Road, Ellis Grove, IL 62241(618) 859-3741

Website: <https://www.dnrhistoric.illinois.gov/experience/sites/site.fort-kaskaskia.html>

Randolph County State Recreation Area

Activities: trails, fishing, hiking, picnicking, boating, hunting, camping, several shelter houses and play areas

Contact Info: 4301 South Lake Dr., Chester, IL 62233.....(618) 826-2706

Website: <https://www.dnr.illinois.gov/parks/park.randolphcounty.html>

World Shooting & Recreational Complex

Activities: camping, cowboy action shooting, fishing, skeet shooting, rifle/pistol, sporting clays, trapshooting, dining at the complex

Contact Info: 1 Main Event Lane, Sparta, IL 62286(618) 295-2700

Website: <https://www.dnr.illinois.gov/parks/worldshootingrecreationalcomplex.html>

*Piney Creek Ravine Nature Reserve

Services: nature trails for hiking with waterfall and beautiful rocks

Contact Info: Piney Creek Rd., Ava, IL 62907(618) 826-2706

Website: <https://www.alltrails.com/trail/us/illinois/piney-creek-ravine-nature-reserve-trail> or
<https://www.dnr.illinois.gov/parks/park.pineycreek.html>

POOLS & OTHER

Randolph County YMCA & Outdoor Pool

Contact Info: 130 South Oak St., Red Bud, IL 62278(618) 282-9622

* Located outside of Randolph County but available to Randolph County residents

** Online & National Hotline numbers

Ratz Memorial Park & City Pool

Contact Info: Ratz Park, 603 W. Market St., Red Bud, IL 62278(618) 282-2898

Sparta City Municipal Pool

Contact Info: 1401 North Hillcrest Dr., Sparta, IL 62286.....(618) 443-3000

***Perry Park Center (Missouri)**

Activities: indoor pool, gymnasium, indoor batting cage, party rooms, theatre, fitness activities, disc golf, multi-purpose fields, library and more

Contact Info: 800 City Park Dr., Perryville, MO 63775.....(573) 547-7275

Website: <https://www.cityofperryville.com/608/Parks-Recreation>

***Ste. Genevieve County Community Center (Missouri)**

Activities: indoor pool, fitness classes, party rooms

Contact Info: 21390 MO-32, Ste. Genevieve, MO 63670(573) 883-5244

Website: <https://www.sgccc.com>

RUNAWAY

****National Runaway Safeline**

Services: available 24/7 to listen and offer confidential, non-directive and non-judgmental support if you are thinking of running away from home, if you have a friend who has run away, or if you are a runaway ready to go home

Contact Info:(800) RUNAWAY (800) 786-2989

SENIOR SERVICES

NUTRITION SITES

Northeastern Randolph County Senior Center (Sparta)

Services: a place to visit, play cards, pool, bingo, bunko, & have lunch. Meal delivery for those in need.

Contact Info: 500 W. Second Street, Sparta, IL 62246.....(618) 443-4020

Steeleville Senior Center

Services: daily meals and activities

Contact Info: 107 W. Broadway, Steeleville, IL 62288.....(618) 965-3134

Hours: Monday-Friday

Website: <http://www.steeleville.org/>

Western Egyptian (Chester Senior Center)

See information under Anchor Agencies

SENIOR PROGRAMS & SERVICES

AARP Driver Safety through Randolph County Farm Bureau

Services: Two-day course (all classroom setting, NO driving) offered to those who are 55 and older who qualify (have a driving record free of accidents and moving violations for a continuous 12 month period).

Those who attend the entire two-day course are eligible for a discount on their auto insurance.

Contact Info: Randolph County Farm Bureau, 1403 Hillcrest Dr., Sparta, IL 62286(618) 443-4511

AmeriCorps Seniors – Retired and Senior Volunteer Program (RSVP)

Services: RSVP provides opportunities for persons age 55 and over to make a difference in their communities through volunteer services.

* Located outside of Randolph County but available to Randolph County residents

** Online & National Hotline numbers

Contact: Chester Senior Center, 805 State St., Chester, IL 62233.....(618) 826-5108
Website: <https://weeoc.org/services/retired-senior-volunteer-program/>

Community Wellness Classes and Programs (Memorial Hospital of Chester)

Services: A variety of classes and programs are offered throughout the year at Memorial Hospital. These sessions are usually free and open to the public. Please visit our website or call the Community Relations Coordinator ext. 1373 at Memorial to inquire about current classes and programs.

Contact Info: 1900 State St., Chester, IL 62233(618) 826-4581
Website: <https://www.mhchester.com/calendar-of-events>

Community Wellness Classes and Programs (Sparta Community Hospital)

Services: Sparta Community Hospital offers a wide variety of ongoing community wellness classes and programs for seniors. SCH also offers the “A Matter of Balance” program that is designed to reduce the fear of falling and increase activity levels among older adults. Please visit the SCH website for more information.

Contact Info: 818 E. Broadway, Sparta, IL 62286.....(618) 443-2177
Website: <https://www.spartahospital.com/>

ComWell

See Information under Anchor Agencies

Randolph County Health Department

See Information under Anchor Agencies

Randolph County YMCA

Services: the Y offers a great variety of activities that help individuals of all ages and abilities grow strong in spirit, mind and body. The Y is committed to ensuring that everyone – regardless of ability to pay – can enjoy the Y

Contact Info: Randolph County YMCA, 130 South Oak St., Red Bud, IL 62278.....(618) 282-9622
Website: <https://gwrymca.org/>

Red Bud Regional Home Care

Services: Alzheimers and dementia care, behavioral health nursing, care transitions, chronic disease management, fall prevention, heart disease, home health aides, infusion therapy, medical social work, medication management, nutritional consult, occupational therapy, pain management, patient/caregiver graining, Personal Emergency Response System (PERS), physical therapy, skilled nursing, smooth transition from hospital discharge to home health, speech therapy, and wound, ostomy and continence nursing.

Contact Info: 115 W. Market Street, Ste 101, Red Bud, IL 62278(618) 282-3338
Website: <https://lhcgroupp.com/locations/red-bud-regional-home-care>

Red Bud Regional Hospital - Senior Solutions

Services: intensive outpatient group therapy for senior adults over age 65 who are struggling with depression and anxiety.

Contact Info: 325 Spring St., Red Bud, IL 62278.....(618) 282-5950
Website: <https://redbudregional.com/senior-emotional-health/>

Silver Sneakers – Programs for Seniors ages 65+

Services: local community classes, LIVE online classes and on-demand video workouts

Contact Info: Randolph County YMCA, 130 South Oak St., Red Bud, IL 62278.....(618) 282-9622
 Vasquez Fitness Center, 2513 State St., Chester, IL 62233.....(618) 826-5449

* Located outside of Randolph County but available to Randolph County residents

** Online & National Hotline numbers

University of IL – Randolph County Extension Office

Services: offering a variety of programs for older adults. Presentations may be requested regarding brain health, mindfulness, loneliness & isolation, writing your life story, creating a bucket list, building resilience and many more.

Contact Info: 1403 N. Hillcrest Dr., Sparta, IL 62286(618) 443-4364

Website: <https://extension.illinois.edu/fjprw>

***AgeSmart Community Resources**

Services:

Information & Assistance / Respite for Caregiver..... (618) 222-2561

Adult Protective Services (Southwestern IL Visiting Nurse Assn).....(618) 236-5863

Congregate & Home Delivered Meals *Contact local nutrition site*

State Health Insurance Program (SHIP) *Contact local nutrition site*

Health Promotion Programs (The Oasis Institute).....(314) 862-2933

Legal Assistance (Land of Lincoln Legal Assistance Foundation)(618) 398-0958

Long-Term Care Ombudsman (Senior Services Plus).....(618) 465-3298

Contact Info: 7 Bronze Pointe S Ste B, Swansea, IL 62226(618) 222-2561

Website: https://www.agesmart.org/randolph_county_services

***Agency on Aging of Southwestern Illinois**

Services: counseling sessions in homes of senior adults and meal delivery available

Contact Info: 2365 Country Rd., Belleville, IL 62221(800) 326-3221

Website: <https://www.agingcare.com> - to begin assessment

***CenterPointe Hospital**

(Medicare, Medicaid, major insurance, self-pay)

Services: help older adults cope with emotional problems or stressors

Contact Info: 4801 Weldon Spring Parkway, St. Charles, MO 63304(855) 376-6856

Website: <https://www.centerpointehospital.com/>

***Illinois Department of Children & Family Services – Grandparents raising Grandchildren**

Services: the Extended Family Support Program (EFSP) assists relative caregivers who are caring for a relative’s children who are not part of the child welfare system.

Contact Info: DCFS Hotline(800) 252-2873

Say “I am caring for my relative’s child and have been caring for them for more than 14 days. The child is not being abused or neglected but I need help. I would like to be referred to the Extended Family Support Program.”

Website: <https://dcfs.illinois.gov/loving-homes/grandparents-and-older-caregivers-raising-children.html>

***Illinois Department on Aging**

Services:

Senior Helpline..... (800) 252-8966

To report suspected abuse, neglect or financial exploitation of an adult age 60 or older or a person with disabilities age 18-59, call..... (866) 800-1409..... TTY (888) 206-1327

Medicare sign up, help with costs and free health insurance counseling..... (800) 633-4227

Long Term Care Ombudsman(800) 233-4904 or (618) 465-3298

Center for Independent Living, call Linc - CIL(618) 235-9988

Eldercare Locator.....(800) 677-1116

Alzheimer’s Hotline(800) 272-3900

Application for Benefits (SNAP, etc.)(800) 843-6154

Contact Info: One Natural Resources Way, #100, Springfield, IL 62702.....(800) 252-8966

Website: <https://ilaging.illinois.gov/>

***Illinois Long-Term Care Ombudsman Program**

Services: protects and improves quality of life for residents in long-term care setting.

* Located outside of Randolph County but available to Randolph County residents

** Online & National Hotline numbers

Contact Info: SSP Ombudsman Program, Senior Services Plus, Inc.
 2603 North Rogers Ave., Alton, IL 62002(800) 233-4904
 Serving Bond, Clinton, Madison, Monroe, Randolph, St. Clair & Washington Counties

***Illinois Telecommunication Access Corp (ITAC)**

Services: not-for-profit serving the deaf, hard of hearing, late-deafened, deafblind and speech-disabled communities. Their phones are superior in amplification, features, adjustability and durability... and they're FREE.
Contact Info: 3001 Montvale Dr., Ste A, Springfield, IL 62704(800) 841-6167
Website: <https://www.itactty.org/>

***Oasis**

Services: partnering with AgeSmart to offer programs to help you age well, your way. Programs include a Matter of Balance; Live Well, Be Well; Aging Mastery program; Wellness Recovery Action Plan (WRAP); and Tai Chi.
Contact Info:(314) 862-2933 ext. 246
Website: <https://st-louis.oasisnet.org>

***Southwestern Illinois College – Programs and Services for Older Persons (PSOP)**

Services: Alzheimer’s Support Group, Parkinson’s Support Group & Caregiver Meetings as well as:
 Information & Assistance (618) 234-4410
 Advocacy with government benefit programsext. 7035
 State Health Insurance Program (SHIP)..... ext. 7033
 FREE Amplified Phones /ITAC)..... ext. 7040
 Foster Grandparent Program ext. 7062
 Senior Companion Program ext. 7023
Contact Info: 201 North Church St., Belleville, IL 62220(618) 234-4410
Website: <http://www.swic.edu/psop>

***Violence Prevention Center of Southwestern Illinois**

Services: Provide shelter, advocacy and counseling for people of all ages living in Southwestern Illinois.
Contact Info: P.O. Box 831, Belleville, IL 62222Crisis Line (618) 295-0895
Website: <https://www.vpcswi.org>

****AARP**

Services: AARP is dedicated to empowering Americans 50 and older to choose how they live as they age. Services are offered in the following areas: money management, work & jobs, Social Security, Medicare, caregiving, games & travel.
Website: <https://www.states.aarp.org/illinois/>

****Elder Abuse Hotline**

Contact Info:(800) 222-8000

SEXUAL ASSAULT

***Survivor Empowerment Center**

Services: supporting survivors of domestic and sexual violence (and their children) with shelter and education. (Individual needs to call & be screened before they can advise if a bed is available)
Contact Info: 610 South Thompson St., Carbondale, IL 62901(618) 549-4807
24-hour hotline(800) 334-2094
Website: <https://www.empoweringsurvivors.org/>

* Located outside of Randolph County but available to Randolph County residents
 ** Online & National Hotline numbers

***Metro East Every Survivor County**

Services: medical and legal advocacy, counseling, community and professional education and trainings, prevention education, and confidential sexual assault crisis line
Contact Info:CRISIS LINE 24/7 (618) 397-0975
Website: <https://www.metroeasteverysurvivorcounts.org/>

****National Sexual Assault Hotline**

Contact Info:(800) 656 HOPE (800) 656-4673

SMOKING CESSATION

Cardiac Pulmonary Rehab Center (Memorial Hospital of Chester)

Services: after an event or diagnosis, your provider can refer you, with an order, to the CPRC. An assessment is completed and an individualized treatment plan is created. Rehabilitation programs at the center provide comprehensive care to patients with heart and lung conditions. Through the program, individuals are given a structured program that includes education, counseling, and exercise to strengthen their lungs and heart. Participants in the program have access to various tools and a full support system to help them recover. The CPRC training on physical activity, medications, healthy living, stress management, and smoking cessation.
Contact Info: 1900 State Street, Chester, IL 62233(618) 826-4581 ext. 1151
Website: <https://www.mhchester.com/cprehab>

Cardiopulmonary Rehabilitation (Sparta Community Hospital)

Services: medically supervised comprehensive program designed to improve the health and wellbeing of individuals with heart or lung conditions. Includes smoking cessation education.
Contact Info: 205 South Burns Avenue, Sparta, IL 62286(618) 443-2177 ext. 1336
Website: <https://www.spartahospital.com/services/swing-bed-program/>

Courage to Quit (Respiratory Health Association) administered by ComWell

Services: evidence-based group or individual tobacco treatment program for adults available in multiple formats; RHA’s integrated tobacco intervention program
Contact Info: ComWell(618) 282-6233
Website: <https://resphhealth.org/what-we-offer/our-programs-initiatives/courage-to-quit/>

Lung Screening Program (Memorial Hospital of Chester)

Services: the Lung Cancer Screening Program is covered by most private insurance plans, Medicare and Medicaid. Patients must have a shared decision-making visit with a medical provider prior to their lung cancer screening test. Check with your provider, or call our Nurse Navigator at the phone number below.
Contact Info: 1900 State Street, Chester, IL 62233 855-399-LUNG (5864)
Website: <https://www.mhchester.com/lung-screening>

****1-800-QUIT NOW**

Services: national router number directing caller to state quit line
Contact Info:English (800) 784-8669
Spanish (855) 335-3569
Website: English: <https://www.cdc.gov/tobacco/campaign/tips/index.html>
 Spanish: https://www.cdc.gov/tobacco/basic_information/e-cigarettes/spanish/index.htm

****American Cancer Society – Quit for Life Program**

Services: 24/7 phone-based coaching and web-based learning support service to help smokers quit. Participants are matched with a quit coach who helps develop a personalized quit plan, provides guidance in choosing medicines and gives ongoing follow-up support
Website: <https://www.quitnow.net/mve/quitnow>

* Located outside of Randolph County but available to Randolph County residents
 ** Online & National Hotline numbers

****Illinois Quitline**

Services: receive individual counseling, advice, tips and encouragement. FREE
Contact Info: (866) QUIT-YES (866) 784-8937
Hours: 7 days/week 7:00 a.m.-11:00 p.m.
Website: <https://www.quityes.org/>

****Smokefree.gov**

Services: provides information and professional assistance to support those who want to quit smoking; includes online step-by-step cessation guide
Website: <https://smokefree.gov/>

SUBSTANCE MISUSE & RECOVERY

For a current list of Substance Abuse Support Groups, call (618) 282-6233 ext.105
.....or send email to allianceinfo@comwell.us

ComWell

See information under Anchor Agencies

***Little Egypt Area of Narcotics Anonymous**

Services: serving the southern Illinois communities of: Carbondale, Carterville, Centralia, Christopher, DuQuoin, Fairfield, Flora, Harrisburg, Herring, Marion, Mt. Vernon, Nashville, Salem, Sparta.
Contact Info: P.O. Box 1561, Mt. Vernon, IL 628964
24 Hour Helpline (Call or Text).....(618) 322-3178

***CenterPointe Hospital**

(Medicare, Medicaid, major insurance, self-pay)
Services: addiction recovery & TMS treatment for depression
Contact Info: 4801 Weldon Spring Parkway, St. Charles, MO 63304 ..(800) 345-5407 or (636) 441-7300
Website: <https://www.centerpointehospital.com/>

***Centerstone South**

Contact Info: 2311 South Illinois Ave., Carbondale, IL 62903(618) 457-6703
Website: <https://centerstone.org/>

***Chestnut Health Systems**

(Medicare, Medicaid, most insurance, self-pay)
Services: substance use, depression, gambling addiction, financial debt
Contact Info: 12 North 64th St., Belleville, IL 62223(618) 397-0900
Website: <https://www.chestnut.org/>

***Comprehensive Behavioral Health Center**

(Discounts available based on family size & income)
Services: provide quality individualized essential services for people in need of emotional, rehabilitative and social support, on a 24-hour basis, in the least restrictive environment

- Mental Health Services: crisis, Living Room, Drop In Center, child & adolescents, Adult Re-Deploy, Project for Assistance in Transition from Homelessness (PATH), and residential programs
- Outpatient Treatment
- Methadone Clinic
- Parenting Teens

Contact Info: 505 South 8th St., East St. Louis, IL 62201.....(618) 482-7330
Website: <https://cbhc1.org/>

* Located outside of Randolph County but available to Randolph County residents

** Online & National Hotline numbers

***Gateway Foundation**

Services: withdrawal management, residential inpatient treatment, Patient Hospitalization Program (PHP) outpatient substance use treatment, outpatient alcoholism treatment, intensive outpatient program and sober living homes

Contact Info: 1 Bronze Pointe North, Swansea, IL 62226(618) 234-9002
 1080 East Park St., Carbondale, IL 62901(618) 944-3805
 600 West Lincoln Ave., Caseyville, IL 62232(618) 345-3970

Website: <https://www.gatewayfoundation.org/>

***NAMI**

See information under Anchor Agencies

***New Vision**

(Most insurance accepted)

Services: inpatient medical stabilization and withdrawal management service for adults with drug, alcohol and related health issues

Contact Info: 2100 Madison Avenue, Granite City, IL 62040(618) 358-0200

Website: <https://www.specialcarecorp.com/>

***New Season Treatment Center**

(No insurance accepted – see daily costs)

Services: Medication assisted treatment and counseling

Contact Info: 760 South Kingshighway, Suite F, Cape Girardeau, MO 63701

..... Existing patients (573) 335-4333 or
 New patients (877) 284-7074

Website: <https://www.newseason.com/>

***The Aviary Recovery Center**

Services: inpatient medical detox, Medication Assisted Treatment, residential drug and alcohol treatment Program, dual diagnosis program, men’s sober living, Partial Hospitalization Program (PHP), Intensive Outpatient Program (IOP)

Phone Number:(618) 304-9762 Or (888) 900-1293

Contact Info: Residential Program: 22933 Hwy 61, Eolia, MO 63344

Outpatient Program: 333 S. Kirkwood Rd., Ste 303, Kirkwood, MO 63122

Website: <http://www.aviaryrecoverycenter.com>

****Illinois Helpline for Opioids and Other Substances**

Services: treatment access for people with Opioid Use Disorder (OUD) with Medication-Assisted Recovery (MAR) at risk for fatal overdosing. MAR is an effective treatment and harm reduction intervention for OUD: patients on MAR have a lower risk of fatal overdose than those receiving behavioral therapies alone. MAR NOW connects callers to immediate treatment for opioid use disorder, including telephonic prescription and home induction on buprenorphine or same-day clinic appointments for methadone, buprenorphine, or naltrexone. MAR NOW can also connect patients to withdrawal management and residential treatment. Callers asking for opioid treatment between 6am-10pm seven days/week will be immediately connected to a provider. After hours, callers will leave a message and receive a call back the next day.

Contact Info: 24/7(833) 234-6343 or text “HELP” to 833234

****Narcotics Anonymous**

Contact Info: 24 Hour Help Line(618) 322-3178

****Substance Abuse & Mental Health Services Administration (SAMHSA)**

Services: free & confidential treatment referral hotline/Treatment Locator Tool

Contact Info: TDD (800) 487-4889 or (800) 662-HELP (4357)

Website: <https://www.samhsa.gov/find-help/national-helpline>

* Located outside of Randolph County but available to Randolph County residents

** Online & National Hotline numbers

SUICIDE PREVENTION

**988: National Suicide Prevention Lifeline

Services: free and confidential support for people in distress, prevention and crisis resources for you or your loved ones; available 24 hours a day; English and Spanish
Contact Info: 988 or (800) 273-8255
Website: <https://988lifeline.org/>

**LifeSavers Training Corp.

Services: LifeSavers is a recognized student organization in several high schools in southern Illinois which have chosen to be pro-active in caring for their student population. LifeSavers is a peer-support suicide and crisis-prevention program designed to help teenagers cope healthfully with the challenges of drugs and alcohol, peer and family relationships, sexual issues, academic problems, aggression, anxiety, and suicide. LifeSavers Training is listed in the SPRC/AFSP best practices registry for suicide prevention.
Contact Info: executivedirector@lifesaverstrainingcorp.org
Website: <https://www.lifesaverstrainingcorp.org/>

**Suicide Prevention Hotline

Contact Info: (800) 442-HOPE (4673)

TRANSPORTATION

Chester Senior Center

Services: provides transportation to Chester residents 60 years of age and older to and from community resources. The vans can provide rides to the senior site, shopping, doctor appointments, banks, post office and any other necessary location. It is recommended to call at least 48 hours in advance to schedule a ride.
Contact Info: 805 State Street, Chester, IL 62233 (618) 826-5108

Monroe Randolph Transit District

Services: public transportation for anyone, anywhere in Monroe & Randolph Counties and fixed bus routes into St. Clair County. All vehicles are ADA compliant and lift equipped. Services should be scheduled 24 hours in advance. We accept exact cash, sell tickets & bill Medicaid/Managed Care
ON DEMAND service is available within Randolph & Monroe counties and will pick you up at any address you specify and drop you off at another address you specify. Cost is \$6.00 one-way.
GO LOCAL trips begin and end within the same city limits (available in Steeleville, Sparta, Chester or Red Bud). Cost is \$3.00 one-way.
GO ST.CLAIR trips are fixed routes that start in Monroe or Randolph Counties and head up the Greenmount corridor assessing shopping, dining, SWIC and medical resources. Cost is \$10.00 for a day pass.
Hours: Monday-Friday 5:00 a.m.- 6:00 p.m.
Contact Info: 1320 Melmar Dr., Sparta, IL 62286 (618) 443-9087
Email: mrt.dispatch@gmail.com
Website: <http://www.goMRTD.com>

First Transit

Services: pays for transportation to medical appointments for Medicaid recipients Rules: 1) Rider must be on the state medical program and needs transportation; 2) Transportation must be pre-approved; 3) Rider must use approved transportation provider; 4) Provider must apply with the Department of Human Services to be approved; and 5) Transportation is only provided to the nearest facility
Contact Info: (877) 725-0569
Website: https://www.illinois.gov/hfs/SiteCollectionDocuments/First_Transit_Trip_Request_%20Instructions.pdf

* Located outside of Randolph County but available to Randolph County residents
 ** Online & National Hotline numbers

UNITED STATES POSTAL SERVICE

For all USPS Locations: TTY (877) 889-2457

Baldwin Post Office

Special Services: Money Orders, Burial Flags, Federal Duck Stamps
Contact Info: 109 South 5th St., Baldwin, IL 62217-9998(618) 785-2271
Lobby Hours: 7 Days/Week 12:01am-11:59pm
Retail Hours: M-F 8:00am-12:00pm, Sat 8:30am-9:30am, Sun Closed

Chester Post Office

Special Services: Money Orders, Burial Flags, Greeting Card Services, Passport Appointments, Passport Photos
Contact Info: 1321 Swanwick St., Chester, IL 62233-9998(618) 826-2233
Lobby Hours: 7 Days/Week 12:01am-11:59pm
Retail Hours: M-F 9:00am-4:30pm, Sat 9:00am-12:00pm, Sun Closed
Passport Photos & Appointment Hours: M-F 9:00am-12:00pm, 1:00pm-2:30pm & Sat 9:00am-11:30am

Ellis Grove Post Office

Special Services: Money Orders
Contact Info: 211 Ellis Blvd., Ellis Grove, IL 62241-9998(618) 859-3341
Lobby Hours: 7 Days/Week 12:01am-11:59pm
Retail Hours: M-F 7:30am-11:30am, Sat 7:30am-9:15am, Sun Closed

Evansville Post Office

Special Services: Money Orders, Burial Flags, Federal Duck Stamps
Contact Info: 402 Liberty St., Evansville, IL 62242-9998(618) 853-4415
Lobby Hours: 7 Days/Week 12:01am-11:59pm
Retail Hours: M-F 8:00am-11:00am and 12:00pm-3:00pm, Sat 8:30am-9:30am, Sun Closed

Prairie du Rocher Post Office

Special Services: Money Orders, Burial Flags, Federal Duck Stamps
Contact Info: 211 Henry Street, Prairie du Rocher, IL 62277-9998(618) 284-3377
Lobby Hours: 7 Days/Week 12:01am-11:59pm
Retail Hours: M-F 7:30am-11:30am, Sat 8:00am-9:00am, Sun Closed

Red Bud Post Office

Special Services: Money Orders, Burial Flags, Federal Duck Stamps
Contact Info: 150 S. Main Street, Red Bud, IL 62278(618) 282-2180
Lobby Hours: 7 Days/Week 12:01am-11:59pm
Retail Hours: M-F 8:30am-4:30pm, Sat 8:30am-12:00pm, Sun Closed

Sparta Post Office

Special Services: Money Orders, Burial Flags, Federal Duck Stamps, Greeting Card Services
Contact Info: 208 West Broadway St., Sparta, IL 62286-9998(618) 443-2213
Lobby Hours: 7 Days/Week 12:01am-11:59pm
Retail Hours: M-F 8:00am-5:00pm, Sat 8:30am-12:00pm, Sun Closed

Steeleville Post Office

Special Services: Money Orders, Burial Flags, Federal Duck Stamps, Greeting Card Services
Contact Info: 409 West Broadway, Steeleville, IL 62288-9998(618) 965-3341
Lobby Hours: 7 Days/Week 12:01am-11:59pm
Retail Hours: M-F 8:30am-11:00am and 12:00pm-5:00pm, Sat 8:30am-11:00am, Sun Closed

* Located outside of Randolph County but available to Randolph County residents

** Online & National Hotline numbers

UTILITIES

Western Egyptian Economic Opportunity Council, Inc.

See information under Anchor Agencies

VETERANS

***Centerstone**

See information under Anchor Agencies

***Department of Veterans Affairs Behavioral Medicine**

(Medicare)

Services: crisis and/or medical

Contact Info: 2401 Main St., Marion, IL 62959.....(618) 997-5311

Website: <https://www.marion.va.gov/>

***Illinois Department of Veteran's Affairs**

Services: veteran's service member benefits, family member benefits, burials and memorials, careers and employment, housing assistance, pension, life insurance, education and training, records, health care and disability

Contact Info: 4519 W. Main St., Belleville, IL 62226.....(618) 233-5140 or (800) 4379824

Website: <https://www2.illinois.gov/veterans/Pages/default.aspx>

***NAMI Southwestern Illinois**

See information under Anchor agencies

***VA Medical Center, Marion**

Services: diabetes - classes for veterans only

Contact Info: 2401 W. Main Street, Marion, IL 62959.....(618) 997-5311 ext. 54659

Class is held 3rd Thursday of each month from 9:30 a.m.–11:30 a.m.

Website: https://www.marion.va.gov/services/Diabetes_Education.asp

****Veteran's Crisis Line**

Services: free confidential support available 24/7 to all veterans, service members, National Guard, Reserve and their families and friends

Contact Info: 24/7 Dial 988 then press 1

Website: <https://www.veteranscrisisline.net/>

VISION

BLIND

***Department of Rehab Services/Bureau of Blind Services**

Services: help individuals who have visual impairments with training and job placement assistance

Contact Info: 333 Potomac Blvd., Ste. F, Mt. Vernon, IL 62864.....(618) 242-1041

Website: <https://www.dhs.state.il.us/page.aspx?item=32305>

***Southern Illinois Talking Book Center**

Services: Public Library in Carterville services for the print handicapped in Braille, cassette, books and magazines available for all ages

Contact Info: 607 Greenbriar Road, Carterville, IL 62908.....(618) 985-8375

* Located outside of Randolph County but available to Randolph County residents

** Online & National Hotline numbers

MISCELLANEOUS

Marion Eye Center

Contact Info: 203 Van Zant St., Chester, IL 62233(618) 826-5413
216 North Market St., Sparta, IL 62286(618) 443-2020
Website: <http://www.marioneye.com/>

Southern Illinois Eye Care

Contact Info: 425 West Holmes St., Chester, IL 62233(618) 826-4521
520 East Broadway St., Ste 100, Sparta, IL 62286(618) 443-5252
Website: <https://www.southernillinoiseyecare.com/>

Walmart Vision Center

Contact Info: 1410 North Market St., Sparta, IL 62286(618) 443-4373

****American Academy of Ophthalmology**

Services: provides online eye health information and access to medical eye care
Contact Info:(877) 887-6327
Website: <https://www.aao.org/eyecare-america>

****National Eye Health Education Program**

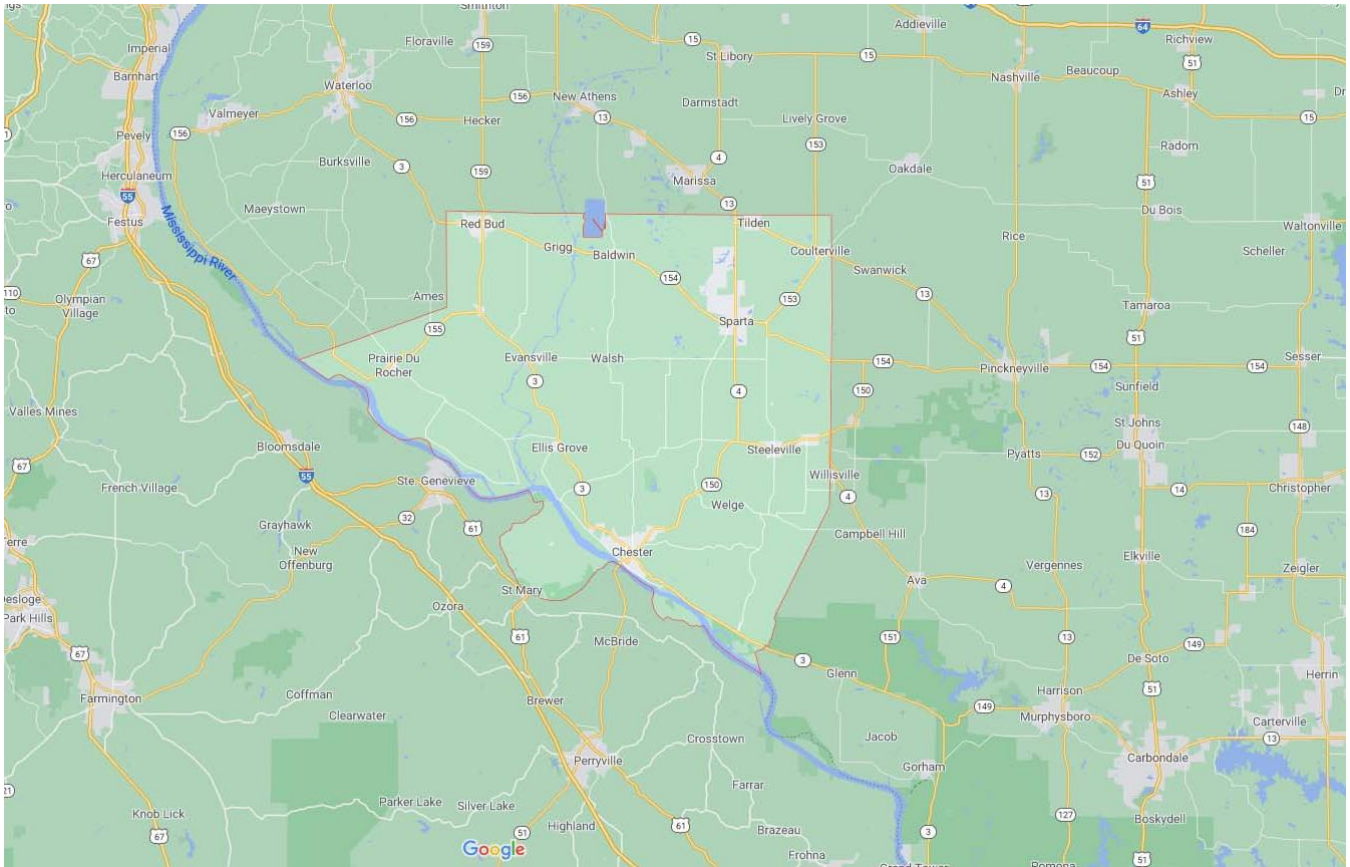
Services: provides online education and materials regarding eye health, disease and treatment
Contact Info: **Email:** 2020@nei.nih.gov (301) 496-5248
Website: <https://www.nei.nih.gov/learn-about-eye-health/resources-for-health-educators/national-eye-health-education-program>

WEATHERIZATION

Western Egyptian Economic Opportunity Council, Inc.

See information under Anchor Agencies

* Located outside of Randolph County but available to Randolph County residents
** Online & National Hotline numbers



The Randolph County Resource Guide is a publication of the ongoing work and contributions of those who believe in “Bringing People and Services Together” throughout Randolph County and Southern Illinois. The Healthy Communities Alliance, recovery & support committees have played a valuable role in maintaining the circulation and updating of this guide.

Printed guides were funded by ComWell through the Rural Communities Opioid Response Program.



* Located outside of Randolph County but available to Randolph County residents

** Online & National Hotline numbers

**Insert Blank Page Here
No Header and Footer On This Page
INSIDE BACK COVER**

This Randolph County, IL Resource Guide is produced and circulated by the entities listed below. If errors are found or if additions are needed, please contact allianceinfo@comwell.us with the subject line "Randolph County Resource Guide". Please provide the below information to the listed email:

1. Page of update/correction
2. Suggested additional information to add
3. Name of Organization
4. Contact information (Address, Phone Number, Email, Website)
5. Hours of operation
6. List of services or description of what this business/organization offers or does that fits in the scope of this Resource Guide.



Randolph County Health Department



**Western Egyptian
Economic Opportunity Council**
Community Action Agency
Serving The Area Since 1965