

News from theNate

DIGITAL
Newsletter May/June 2020 Edition



A bright moon illuminates a dark night for John Henry's "Illinois Landscape, No. 5"



*the***Nate**
NATHAN MANILOW SCULPTURE PARK

This issue of News from theNate responds to a time of uncertainty with reflection, rest, and resilience.

News from theNate

NATHAN MANILOW SCULPTURE PARK



Left: Joel Shapiro's "Untitled" (1982) is set off by spring blooms here at its new home on the E Lounge patio.

Right: Henri Etienne-Martin's "Lanleff Demeure, No. 4" (1961) shares the E Lounge patio with visitors, and the Joel Shapiro.

The two oldest works of art in theNate's collection, Lanleff Demeure, No. 4 (1961) by Henri Etienne-Martin, and Untitled ("Firenze" 1960) by Abbott Pattison (featured below in the artists' birthdays section) are excellent examples of the figurative abstraction going on just prior to the non-objective, modern works that make up the early, foundational pieces of the collection. Visit the patio of E Lounge just outside the Visual Arts Gallery at GSU, and you'll discover an interesting conversation going on between the Martin and the Shapiro. Both are made of bronze, and both have figurative elements that reach upward. But Etienne-Martin was starting with the figure, abstracting it to fit his narrative about memory, place, and time, and Shapiro is a bit more playful; he taps into our need to see the figure so we do the work for him when we anthropomorphize the little guy dancing or a child reaching for a hug. The visual play of the Shapiro continues through the woodgrain visible in what appears to be stock lumber, only to reveal itself as cast bronze, making references to traditions in art making and art history. This is in contrast to the texture of the Martin where the roughness reveals the handprints left in the plaster by the artist while he was making the form that would be cast in bronze.

Inside

- Ways to connect while we are distanced, plans to reopen carefully, staying true to our vision and mission.

Save 2 Dates:

Prairie Party – Saturday, September 12, 2020



Sculpture, Wine & Dine – Saturday, September 11, 2021

Biennial Events

The Advisory Board for theNate is excited to introduce a new concept, which is a slight alteration to an old favorite.

Our signature event "Sculpture, Wine & Dine" combined the best of "Carts and Cocktails" from our past - which included a docent led tour of the collection - with a farm-to-table fine dining celebration which focuses on fundraising to benefit the park's public and educational programs. Sculpture, Wine & Dine guests and sponsors invest in the future growth of community education programs, as well as conservation and exhibitions. This event will now be biennial and will alternate with the "Prairie Party".

Starting in September 2020 the Prairie Party and Sculpture, Wine & Dine will alternate years – mark your calendar!





ReMarks

GSU and theNate celebrated the 50th anniversary over this past year. In those 50 years, the artworks in the collection have been witness to many major world events. When Mark di Suvero was on this land creating his art (1968-69), the world was in chaos with assassinations, protests, wars, and social unrest. A survey of world events in the intervening years reflect the tragedies and triumphs of humanity, and of course continue to today.

It has been some comfort for me to reflect on the timelessness of art, made during specific times, perhaps in response to specific events, but with a transcendence that captures the arc of the human saga. Now that theNate has reopened to our GSU community after the Covid19 closure, it is my hope that you will visit, and while walking the grass paths throughout the park, feeling the resonance of time and place, hearing the artists' voices speak through their work, you may also find comfort in these troubling times.

You can also stay up to date with new developments by following us on our website and social media:

www.govst.edu/sculpture
[www.instagram.com/ thenate](https://www.instagram.com/thenate)
www.facebook.com/nathan.manilow.sculpture.park/

The free Otocast app is a valuable resource for visitors to enhance your experience at your sculpture park right on your own phone!

Jeff Stevenson
Director & Curator, theNate

As we begin to reopen theNate to our GSU community on June 1, 2020, our primary concern is the health and safety of our visitors. If you do choose to visit theNate, please remember:

- Hours to visit are from 7am to 7pm Monday through Friday. The restrooms at the "A North" entrance (see map) are designated for use by visitors to theNate – please do not enter other buildings, entrances, or locations. Wash your hands.
- Practice social distancing by keeping at least six feet of distance between yourself and others; face coverings are required while on campus - wear a mask; wash your hands.
- Please stay home if you are sick or feeling any symptoms, such as fever, coughing, troubled breathing, and/or other flu-like symptoms;
- Visit alone or with members of your household;
- Stay local and visit parks that are closest to where you live;
- If you arrive at theNate or any other park and crowds are forming, please move to another area or return another time/day to visit; and
- Cover your cough or sneeze with a tissue, then throw the tissue in the trash. If you don't have a tissue, cough or sneeze into your upper arm/elbow.

Governors State University's Nathan Manilow Sculpture Park Board

Jeff Stevenson, *Director & Curator*
Patricia Mell Ragland, *President*
Michael Perrott, *Vice President*
Jan Glazar, *Secretary*
Elizabeth L. Kelley, *Immediate Past-President*

Timothy Brennan
Shay Brokemon
Leona Calvin
Jacqueline James Lewis
Gregg Lunceford
Susan Ormsby
Yvonne Orr-El
Victoria Strole
Al Sturges
Paul Uzureau

Ex-officio

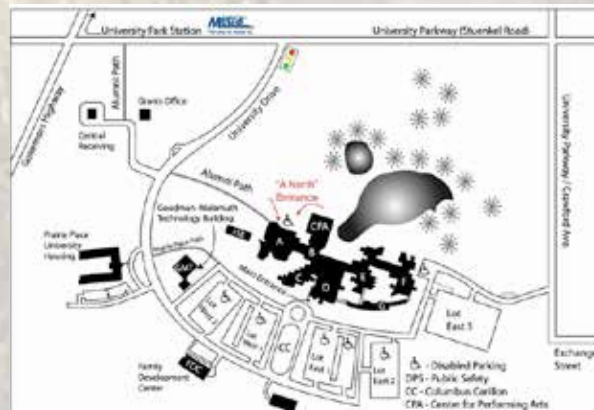
Lewis Manilow, (08/11/1927-12/12/2017), *Founder*
Elaine Maimon, *Ph.D., GSU President*
Will Davis, *CEO, GSU Foundation*
Jason Zingsheim, *Ph.D., Division of Arts and Letters Chair*

Website: www.govst.edu/sculpture
General Email Address: jstevenson@govst.edu
Phone: 708-534-4021
Hours: Dawn until dusk every day
Admission: Free admission to park, some activities have fees.

Send a message with "LandMarks Address" in the subject heading to sculpture@govst.edu

© 2020 Governors State University's Nathan Manilow Sculpture Park

Please direct questions or comments to **Jeff Stevenson, Director & Curator, Nathan Manilow Sculpture Park and Visual Arts Gallery, Governors State University.**



www.govst.edu/sculpture

NEWS FROM THE PARK

BIRTHDAYS



May 11, 1948 Terrence Karpowicz

Terrence Karpowicz was born in 1948 in Cleveland, Ohio and received a B.A. in fine arts from Albion College, Michigan in 1970. Karpowicz moved to New York City to pursue his career as an artist. Through various jobs, including bartending at Max's Kansas City and studio manager of Larry Poons, Karpowicz maintained a studio and continued to paint. In 1972, he assisted with an installation of sculpture exhibition by Mark di Suvero which inspired him to sculpture; the world of materials and labor. In 1973 he enrolled at University of Illinois, Champaign-Urbana in the graduate program in Sculpture. After a distinguished graduate study that included several exhibitions (Frank Logan Medal and Prize from the Art Institute of Chicago) Karpowicz was awarded a Fulbright-Hayes Fellowship to the United Kingdom, serving as Scholar to the Wind and Watermill Section of the Society for the Protection of Ancient Buildings, to study the technical and mechanical aspects of the country's medieval wind and watermills.

Upon completing his fellowship Karpowicz moved to Chicago, Illinois in 1976 to establish a sculpture studio and continue his career. Since then, he has received two National Endowment for the Arts awards, four grants from the Illinois Arts Council, The Newhouse Award, and numerous public and private commissions. He has exhibited throughout the United States, Mexico, Europe and in the Soviet Union. Karpowicz has received seven commissions for public sculpture from the State of Illinois and his work is held in collections of the City of Chicago, Oklahoma City, and the U.S. General Services Administration.

May 15, 1916 Abbott Pattison

Abbott Pattison was a Chicago-born sculptor most known for his abstract, bronze sculptures. Pattison had close connections with his birthplace, where more than twenty of his works are located. He also taught in the School of the Art Institute from 1946–52 and lived in Winnetka, Illinois for thirty-five years, until he moved to Maine in 1993.

Despite his strong connections with Chicago, his career was marked by constant movement. He received his initial training at Yale University, where he received both a Bachelor of Arts in 1937 and a Bachelor of Fine Arts in 1939. After serving in U.S. Navy during World War II, he returned to Chicago and resumed his sculptural career. Since the early 1950s, he worked and taught extensively across the U.S. and Europe, such as serving as sculptor in residence in the University of Georgia and working in France and Italy. His career in Florence, where he maintained a relationship with a bronze-casting facility, had a special impact on him. Ever since his residence in Florence in 1950s, he returned to the city every couple of years to cast sculptures and immerse himself in Renaissance art. "Greek and Renaissance ideas have been inescapable influences," he once noted in an interview.

Pattison held many one-man exhibitions across the country, mostly in Chicago and New York. His works are permanently collected in the Art Institute of Chicago, the Metropolitan Museum of Art and Whitney Museum in New York, and the Israeli State Museum, among many others.





May 23, 1941 Martin Puryear

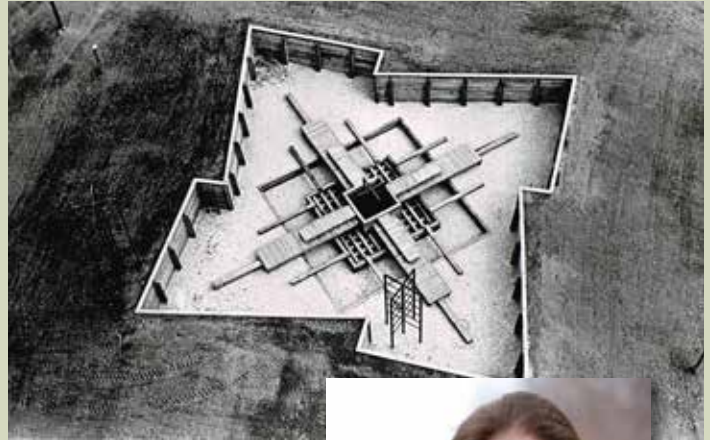
Puryear grew up in Washington, D.C., and there attended Catholic University of America (B.A., 1963). After graduating, he joined the Peace Corps for two years, teaching in a remote village in Sierra Leone. Puryear, who is African American, was intrigued by the native crafts he saw there, and he subsequently studied woodworking and design in Stockholm before returning to the United States to attend Yale University (M.F.A., 1971). He taught at Fisk University in Nashville and at the University of Maryland before moving to Chicago in 1978. He taught at the University of Illinois at Chicago from 1978 to 1990 and then moved to upstate New York, where he continued to work. He received a MacArthur Foundation fellowship in 1989.

Puryear's experiences in Africa and Scandinavia led him to concentrate for much of his career on the sculpting of wood, a medium not commonly employed in modern sculpture. His elegant and powerful work shows a consummate understanding of a wide range of wood-working techniques, including processes such as the lamination and painting of forms (Self, 1978) and strategies evolved from basketry (Charm of Subsistence, 1989). His forms, reduced to essences, are derived from nature or culture and still suggest the actual objects to which they refer. Puryear's efforts as a public sculptor have led him to such materials as steel and granite (North Cove Pylons, New York City, 1995).



Puryear has been the subject of numerous solo exhibitions, including major traveling retrospectives at the Art Institute of Chicago in 1991–92 and at the Museum of Modern Art in New York in 2007. He received many honours, among them the Skowhegan Medal for Sculpture (1990), the National Medal of Arts (2011), and the Yaddo Artist Medal (2016), awarded annually by the Yaddo artist colony, where he was an artist in residence in 1979. He was elected to the American Academy and Institute of Arts and Letters (1992).

Read the full James W. Yood article here <https://www.britannica.com/biography/Martin-Puryear>



May 27, 1944 Mary Miss

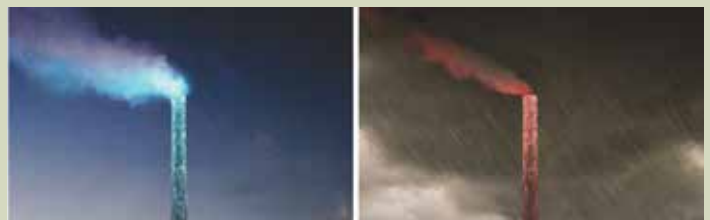
At 75, Mary Miss is creating art that brings our awareness to the environment, but on a scale larger than ever. Her latest project "WaterMark" has been implemented in Milwaukee since 2015 and continues to the present. "WaterMark" is a multidisciplinary approach to raising Milwaukeeans' water IQ. This approach includes artists teaming up with neighborhoods to tell their unique stories, connect people to the natural water cycle as well as understand how the city works to clean water.



The beacon of the whole project is a tower at Jones Island Water Treatment Plant, located between the Kinnickinnic River and Lake Michigan. During dry weather, the tower glows blue to indicate normal water usage is acceptable. When rain is expected, the tower turns red to alert residents to reduce their water usage. When the city reduces its water usage during rainy weather, the water treatment plant can effectively clean waste water before returning it to Lake Michigan. By not reducing water consumption during that time, increased water flow forces waste water back into the lake without proper treatment, therefore polluting the lake.

Throughout the city, there will be other supportive "WaterMarks" sites, such as schools and city government buildings, to engage residents in environmental education through art. This kind of cooperation helps scientists communicate information with the masses that their data alone is just not able to do. Art is making environmental issues accessible! Sounds like an arrangement that many cities can benefit.

By contributing writer Victoria Strole



Mary Miss, WaterMarks: An Atlas of Water for the City of Milwaukee, 2015–, rendering.

BUTTERFLY RANCH

Any home gardener, no matter the skill level or experience, will be familiar with the **need to weed**. In order to enjoy the plants we want, we have to keep other less desirable species from taking over. The same is true for the prairie restoration taking place at theNate. Think of it as a huge garden – 12 acres! – with plenty of invasive species taking over and choking out the native species that the butterflies love and need to survive.

We have put together a maintenance plan to grow what we want (the native species) and keep out what we don't (the invasives), so that the habitat will thrive, be beautiful and useful. In fact, earlier this year, a controlled burn was done to mitigate woody invasive species and support native plant life. Fire is a natural part of the prairie cycle, but in this context – within the sculpture park and campus of GSU – regulation, control, and safety are the name of the game.

The Advisory Board for theNate has approved a 4-year plan so that we can restore, maintain, and support the native prairie lands – but all of this will come at a price of 8 to 10 thousand per year.

During this time of reflection, we'd like to share the history of Bill Dodd and the fund that was set up in his honor, which has made this restoration work possible, and with your help will allow it to continue:



History of Bill Dodd and the fund

In Spring of 2014 the endowment was realized, and The Bill Dodd fund enabled us to provide the required matching funds to secure an Openlands/ComEd grant that led to establishing the Butterfly Ranch in 2019 – a 12 acre patch of land within the park where the natural beauty of the Illinois native prairie can shine a little brighter.

GSU students conducting biological field studies, film and photography projects, as well as occupational therapy are just a few examples of how this resource impacts higher education and campus life. Regional school children visit for STEAM (Science, Technology, Engineering, ART, and Math) experiences at theNate with direct, hands-on interactions with the prairie landscape of the Butterfly Ranch. All this is possible because of generous donors and visionaries like Bill Dodd.

Donate Here <https://www.govst.edu/NMSPDonation/>

VOLUNTEERS BEHIND THE SCENES

Many choose to support theNate through financial contributions, but some give of their time, experience, and expertise. Find out what you can do, and bring a friend! Volunteer opportunities range from being a greeter, helping set up for events, sharing basic information about the park at events and in the community, assisting with group tours of adults and children, organizing materials for school visits, and more. Choose a little or a lot, we can always use your help. Contact Sherri Denault, Education and Outreach Coordinator for more information 708-534-4021 sdenault@govst.edu

I'M A FRIEND OF NATE!

Who do you know who would enjoy monumental outdoor sculpture in a prairie setting? Who do you know who understands the importance of art experiences in education? Who do you know who would like to know more about how theNate is using the collection for social good? Have them go to our website and fill out the "Want more info?" form on the homepage and comment: newsletter. We only send news about once a month and promise not to use anyone's information in any other way. You can unsubscribe at any time. Help us share YOUR sculpture park with friends around the world.



AIA PORTFOLIO REVIEW

The science and biology programs at GSU, Outdoors@theNate school children, and visitors in general will enjoy views of the Butterfly Ranch Illinois Prairie flora and fauna from a new work of art. The Art-in-Architecture Program of the Illinois Capital Development Board has received applications from nearly 30 professional artists and architecture firms wishing to be considered for the project. Although the committee has postponed meeting to finalize the decisions, the review process is underway – and the artists' ideas are amazing! Stay tuned for more.



EDUCATION

Check out our Young Artist Sculpture Projects downloadable PDF on our website - and by young we mean: we're all young at heart when it comes to making art – have fun on your own or with the kids.

<https://www.govst.edu/sculpture/>

Post pictures of your results and tag us on Instagram so we can all share the results!

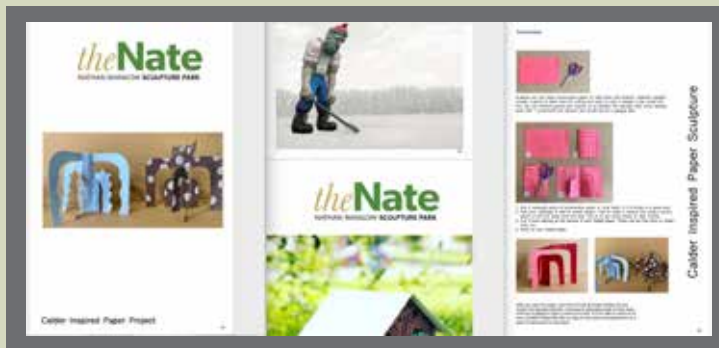
[#thenate](https://www.instagram.com/thenate)

[#thenatechallenge](https://www.instagram.com/thenatechallenge)

[@ thenate](https://www.instagram.com/thenate)

And on Facebook: [@nathan.manilow.sculpture.park](https://www.facebook.com/nathan.manilow.sculpture.park)

<https://www.facebook.com/nathan.manilow.sculpture.park/>



HERITAGE SOCIETY FOR theNATE

Did you know that through planned gifts, you can provide for loved ones, receive tax benefits, generate potential retirement income and help theNate all at the same time? Bequests to Governors State University Foundation are exempt from estate taxes as allowed by law. Join the growing number who are planning their gifts and estates to benefit themselves, their families and the future of the Nathan Manilow Sculpture Park at GSU.

Planning your support is easier than you think. GSU's many giving options allow you to plan today for theNate's tomorrow. Whether you want to donate today, or provide something down the road, we can help you provide for your family and support GSU and theNate. Please contact the Foundation office at 708-235-7559.

<https://www.govst.edu/NMSP-support/>

MORE UPCOMING EVENTS

- ▶ **Saturday, June 20 – Summer Solstice** – self-guided tour, social distancing and mask wearing
- ▶ **July 1 through August 7 – CSI 20 20** – Visual Arts Gallery exhibition
- ▶ **Thursday, August 13 – Nate and Frank Friendraiser** – Bradley House, Kankakee
- ▶ **SATURDAY, SEPTEMBER 12, 2020 – PRAIRIE PARTY** featuring Claire Ashley



- ▶ **Saturday, October 31 – Kids in Costumes / Bark in the Park** – family fun and pet adoptions
- ▶ **Saturday, December 12 – Winter Walk / Empty Bowls / Holiday Party**

Always check our website and/or social media pages to verify the most up-to-date information in this rapidly changing Covid19 situation.

<https://www.govst.edu/sculpture/>

[https://www.instagram.com/ thenate /](https://www.instagram.com/thenate/)

<https://www.facebook.com/nathan.manilow.sculpture.park/>

All events are Rain or Shine! Indoor alternatives are planned in case of inclement weather.

RSVP is requested, but walk-in's are always welcome!
Most events are free of charge

- ▶ **SATURDAY, SEPTEMBER 11, 2021 – SCULPTURE, WINE & DINE BIENNIAL fundraiser (ticketed event)**

COME JOIN US AT YOUR SCULPTURE PARK!

Take a Walk with OTOCAST



The free **Otocast app** is your personal tour guide. Explore the park with the voices of multiple renowned sculptors leading the way. Look for it in your app store on your phone, and use it at destination attractions all over the world.

theNate
NATHAN MANILOW SCULPTURE PARK

www.govst.edu/sculpture

